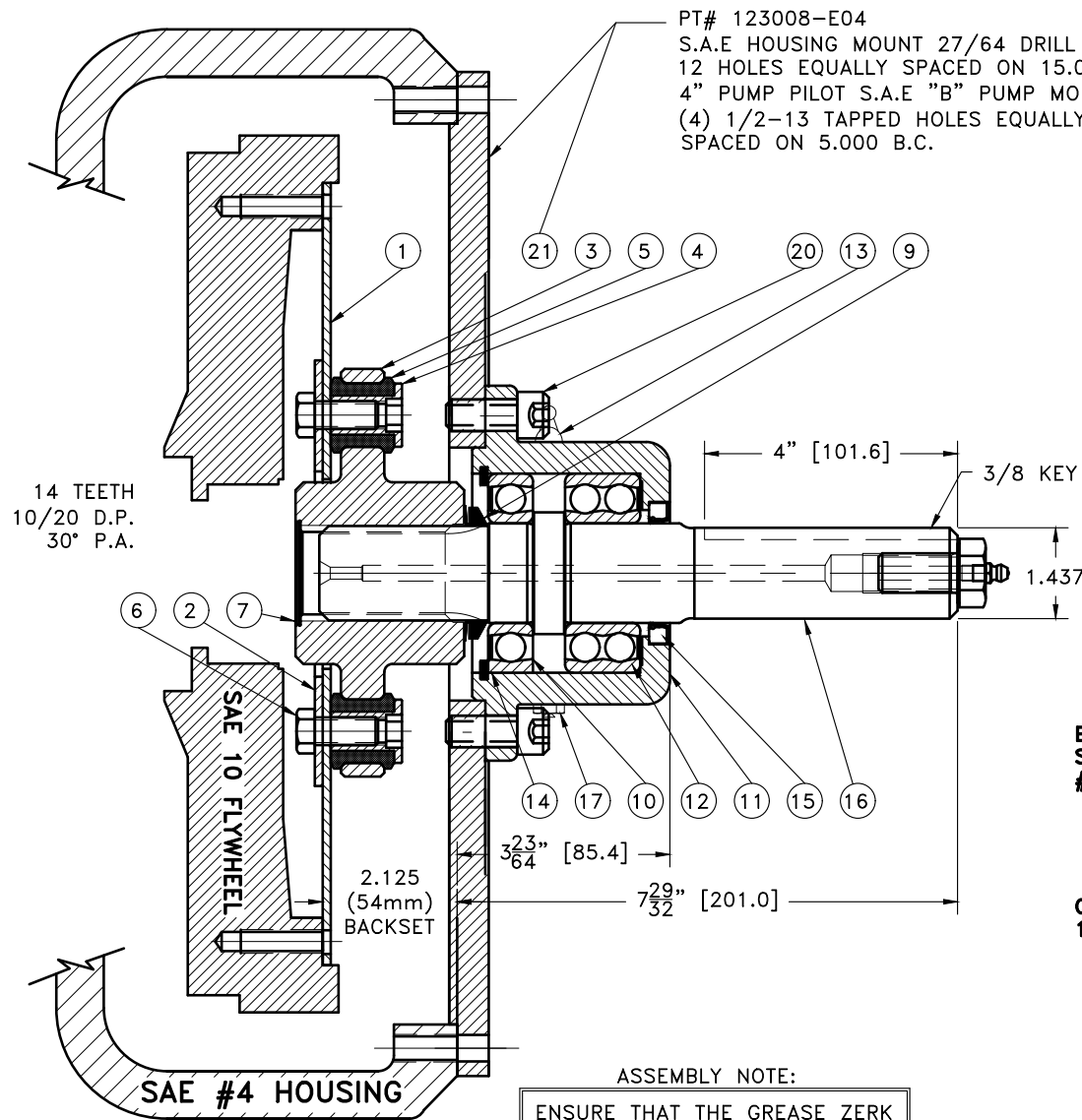


REV	DATE	CHANGE DESCRIPTION	MOD.BY	CK1	CK2
B	06/09/2016	CHANGED SEAL	BSL	JM	HM

NOTES:

1. LIGHTLY GREASE INTERNAL AND EXTERNAL AREA OF SPLINE AT ASSEMBLY USING 1912 COUPLING GREASE (OVER GREASING COULD CAUSE A HYDRAULIC TYPE LIFT ON SEALS).
2. GREASE BEARING HOUSING UNTIL PIN EXTENDS FROM PRESSURE RELIEF VALVE (LOCATED 180° FROM GREASE ZERK). USE OF AN UNLEADED EXTREME PRESSURE LITHIUM GREASE, WITH NLGI NO.2 GRADE IS RECOMMENDED. RUN TIME BETWEEN GREASINGS NOT TO EXCEED 2,000 HOURS.
3. **WARNING!!!** INJURY OR DEATH FROM A ROTATING STUB SHAFT CAN OCCUR IF A CONDITION EXISTS WHICH WOULD CAUSE THE SHAFT TO BREAK OR COME APART FROM ANY PART OF THE ASSEMBLY. DEPENDING UPON THE APPLICATION (FOR EXAMPLE, FAN, PULLEY, SHEAVE, ETC.), THE AREA AROUND THE STUB SHAFT MUST BE SUFFICIENTLY GUARDED SO THAT IN THE EVENT OF FAILURE, THE GUARD WILL CONTAIN ANY AIRBORNE PARTS.



PT# 123008-E04
 S.A.E HOUSING MOUNT 27/64 DRILL THRU
 12 HOLES EQUALLY SPACED ON 15.00 B.C.
 4" PUMP PILOT S.A.E "B" PUMP MOUNT.
 (4) 1/2-13 TAPPED HOLES EQUALLY
 SPACED ON 5.000 B.C.

14 TEETH
 10/20 D.P.
 30° P.A.

**BEARING SUPPORTED
 STUB SHAFT SUB-ASS'Y
 #131238**

**COUPLING ASS'Y
 125732**

ASSEMBLY NOTE:

ENSURE THAT THE GREASE ZERK
 AND RELIEF VALVE ARE LOCATED
 HORIZONTAL WHEN MOUNTING ON
 TO PUMP MOUNT PLATE.

21	123008-E04	PUMP MOUNT PLATE [B4]	1
20	BOLT	1/2-13x1-1/8 SHCS Y D	4
19	609000	GREASE ZERK	1
18	125294	SPEC. 5/8-11 HHB	1
17	1093K11	RELIEF VALVE	1
16	131327	SPLINED SHAFT [14T 10/20]	1
15	132015	SEAL	1
14	RR-314	SPIROLOX RETAINING RING	1
13	600000	GREASE ZERK	1
12	5208WD	DOUBLE BEARING	1
11	125007	BEARING HOUSING [B4]	1
10	208KD	BEARING	1
9	400401	V-RING	1
8	801912	GREASE	1
7	R-0017-02	GREASE PLUG	1
6	BOLT	7/16-20x1 HHB Y D	10
5	H62500	NEOPRENE INSERT	10
4	123727	THREADED BUSHING	10
3	126098	COUPLING HUB [14T 10/20]	1
2	124657-03	BACKING PLATE	1
1	124243-42	FLYWHEEL PLATE [10]	1

SYMBOLS		DET.	PART NUMBER	DESCRIPTION	QTY.
— FLATNESS — STRAIGHTNESS — ANGULARITY ⊥ PERPENDICULARITY // PARALLELISM ⊙ CONCENTRICITY ⊕ TRUE POSITION ○ ROUNDNESS ⊘ CIRCULAR RUN OUT ⊘ TOTAL RUN OUT ⊘ CYLINDRICITY ✓ FINISH		DO NOT SCALE DRAWING TOLERANCES UNLESS OTHERWISE SPECIFIED 1/32" MAXIMUM ANGLE ±1/2° FRACTION ±1/32 DECIMAL .00 ±.01 .000 ±.005 .0000 ±.0005			
CLASS BS ASSY		MAKE: <input checked="" type="checkbox"/> BUY: <input type="checkbox"/>	DRAWN BY KNH	DATE 12/11/2013	DRAWING NO. 131326
DESCRIPTION 10,4,1-7/16,4		CHECKED BY RJH	SCALE	SHEET OF	REV.

THIS DRAWING IS THE PROPERTY OF HAYES MFG. INC. AND IS LOANED
 SUBJECT TO THE CONDITION THAT IT SHALL NOT BE REPRODUCED,
 COPIED, LOANED OR OTHERWISE DISPOSED OF, DIRECTLY OR INDIRECTLY.
 IT SHALL BE USED AS A MEANS OF REFERENCE TO WORK FURNISHED BY
 THIS COMPANY ONLY AND IS NOT TO BE SUBMITTED TO OUTSIDE PARTIES
 FOR EXAMINATION WITHOUT OUR CONSENT.

REPLACES 125068, 125062, 125267,
 125528, 125538, 125672, 125700,
 125702, 125848, & 125971