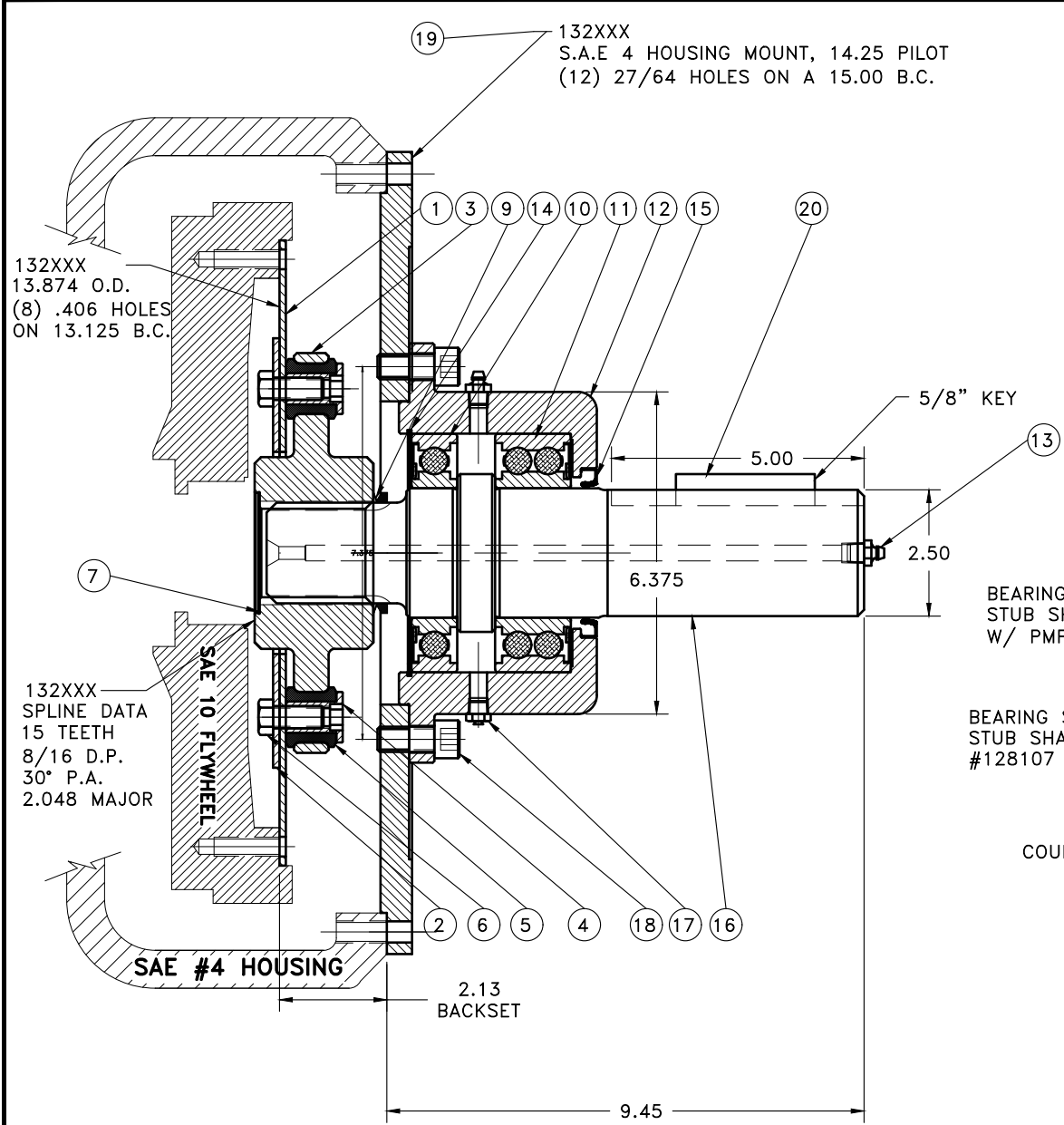


REV	DATE	CHANGE DESCRIPTION	MOD.BY	CK1	CK2



NOTES:

1. LIGHTLY GREASE INTERNAL AND EXTERNAL AREA OF SPLINE AT ASSEMBLY USING SUPPLIED COUPLING GREASE (OVER GREASING COULD CAUSE A HYDRAULIC TYPE LIFT ON SEALS).
2. **AT ASSEMBLY GREASE BEARING HOUSING UNTIL PIN EXTENDS FROM PRESSURE RELIEF VALVE (LOCATED 180° FROM GREASE ZERK).** USE OF AN UNLEADED EXTREME PRESSURE LITHIUM GREASE, WITH NLGI NO.2 GRADE IS RECOMMENDED. RUN TIME BETWEEN GREASINGS NOT TO EXCEED 2,000 HOURS.
3. **WARNING!!!** INJURY OR DEATH FROM A ROTATING STUB SHAFT CAN OCCUR IF A CONDITION EXISTS WHICH WOULD CAUSE THE SHAFT TO BREAK OR COME APART FROM ANY PART OF THE ASSEMBLY. DEPENDING UPON THE APPLICATION (FOR EXAMPLE, FAN, PULLEY, SHEAVE, ETC.), THE AREA AROUND THE STUB SHAFT MUST BE SUFFICIENTLY GUARDED SO THAT IN THE EVENT OF FAILURE, THE GUARD WILL CONTAIN ANY AIRBORNE PARTS.

ASSEMBLY NOTE:

ENSURE THAT THE GREASE ZERK AND RELIEF VALVE ARE LOCATED HORIZONTAL WHEN MOUNTING ON TO PUMP MOUNT PLATE OR HOUSING.

BEARING SUPPORTED STUB SHAFT SUB-ASS'Y W/ PMP

BEARING SUPPORTED STUB SHAFT SUB-ASS'Y #128107

COUPLING ASS'Y

QTY	PART NUMBER	DESCRIPTION
1	20 128808	5/8" SQ KEY
1	19 132XXX	PUMP MOUNT PLATE
6	18 BOLT	1/2-13x1-1/8 SHCS D
1	17 1093K11	RELIEF VALVE
1	16 128106	SPLINE SHAFT
1	15 25420	SEAL
1	14 RR-472	SPIROLOX RETAINER
2	13 600000	GREASE ZERK
1	12 128105	BEARING HOUSING
1	11 5213E/C3 (SKF)	DOUBLE ROLLER BEARING
1	10 213WDN	SINGLE ROLLER BEARING
1	9 400500	V-RING SEAL
1	8 801912	GREASE
1	7 R-0017-03	GREASE PLUG
14	6 BOLT	7/16-20x1 HHB Y D
14	5 H62500	NEOPRENE INSERT
14	4 123727	THREADED BUSHING
1	3 132XXX	COUPLING HUB
1	2 126234	BACKING PLATE
1	1 132XXX	FLYWHEEL PLATE

SYMBOLS		DET.	PART NUMBER	DESCRIPTION	QTY.
—	FLATNESS	DO NOT SCALE			
—	STRAIGHTNESS	DRAWING			
—	ANGULARITY	TOLERANCES UNLESS OTHERWISE SPECIFIED			
—	PERPENDICULARITY	1/32" MAXIMUM			
—	PARALLELISM	ANGLE ±1/2°			
—	CONCENTRICITY	FRACTION ±1/32			
—	TRUE POSITION	DECIMAL			
—	ROUNDNESS	.00 ±.01			
—	CIRCULAR RUN OUT	.000 ±.005			
—	TOTAL RUN OUT	.0000 ±.0005			
—	CYLINDRICITY				
—	FINISH				

TITLE: BEARING SUPPORTED STUB SHAFT ASS'Y

MATERIAL:

CLASS	MAKE: <input checked="" type="checkbox"/> BSL BUY: <input type="checkbox"/>	DRAWN BY	DATE	DRAWING NO.
BS ASSY		BSL	05-10-2016	132223
DESCRIPTION	CHECKED BY	SCALE	SHEET OF REV.	
10,4,2-1/2,5				

THIS DRAWING IS THE PROPERTY OF HAYES MFG. INC. AND IS LOANED SUBJECT TO THE CONDITION THAT IT SHALL NOT BE REPRODUCED, COPIED, LOANED OR OTHERWISE DISPOSED OF, DIRECTLY OR INDIRECTLY. IT SHALL BE USED AS A MEANS OF REFERENCE TO WORK FURNISHED BY THIS COMPANY ONLY AND IS NOT TO BE SUBMITTED TO OUTSIDE PARTIES FOR EXAMINATION WITHOUT OUR CONSENT.