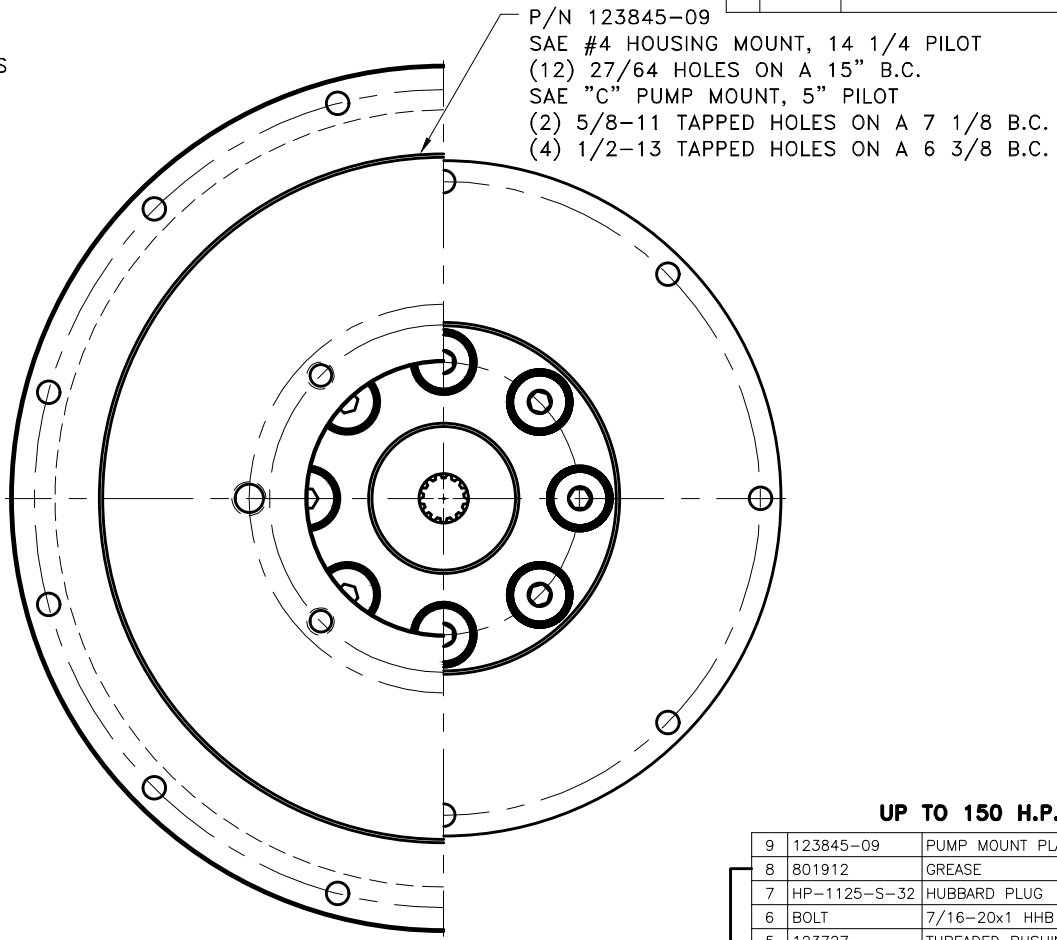
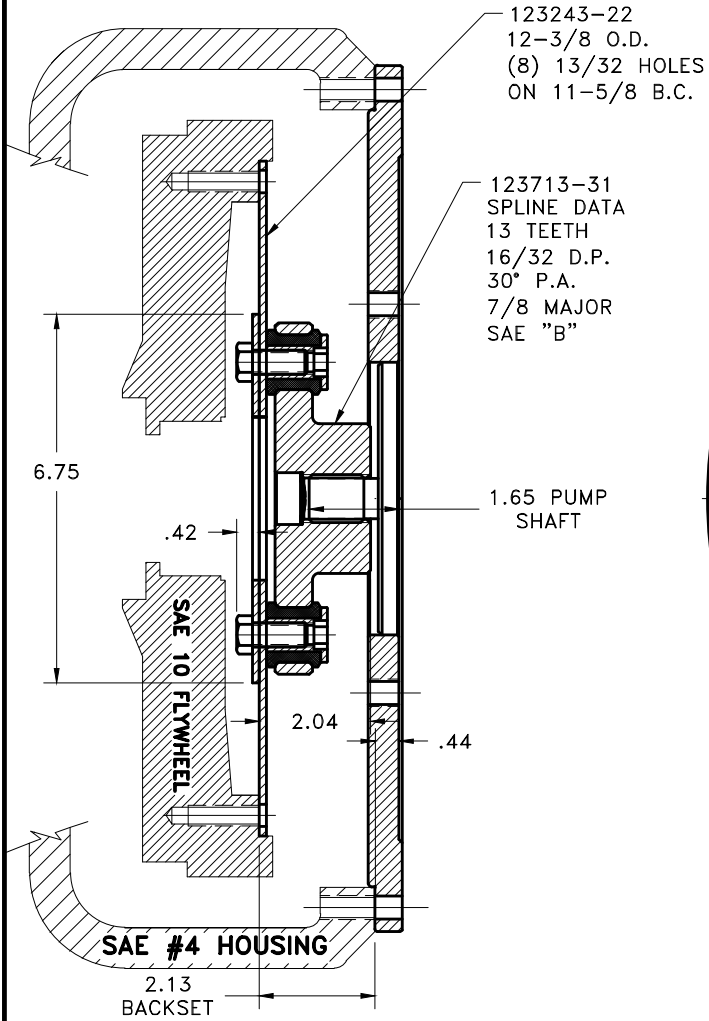


REV	DATE	CHANGE DESCRIPTION	MOD.BY	CK1	CK2



UP TO 150 H.P.

COUPLING ASS'Y #127739

DET.	PART NUMBER	DESCRIPTION	QTY.
9	123845-09	PUMP MOUNT PLATE	1
8	801912	GREASE	1
7	HP-1125-S-32	HUBBARD PLUG	1
6	BOLT	7/16-20x1 HHB	8
5	123727	THREADED BUSHING	8
4	H62500	NEOPRENE INSERT	8
3	123713-31	COUPLING HUB	1
2	124657-02	BACKING PLATE	1
1	123243-22	FLYWHEEL PLATE	1

SYMBOLS		DET.	PART NUMBER	DESCRIPTION	QTY.
	FLATNESS	DO NOT SCALE			
	STRAIGHTNESS	DRAWING			
	ANGULARITY	TOLERANCES UNLESS OTHERWISE SPECIFIED			
	PERPENDICULARITY				
	PARALLELISM				
	TRUE POSITION				
	CONCENTRICITY				
	CIRCULAR RUN OUT	ANGLE ±1/2°			
	TOTAL RUN OUT	FRACTION ±1/32			
	CYLINDRICITY	DECIMAL			
	FINISH	.00 ±.01			
		.000 ±.005			
		.0000 ±.0005			

CLASS		DRAWN BY		DATE	
SAE 10		SIETING		11-16-2016	
DESCRIPTION		CHECKED BY		SCALE	
10,3,13T16/32,C24,150					
HAYES MANUFACTURING INC. ®				DRAWING NO.	
PUMP DRIVE KIT				132468	
MATERIAL				SHEET OF REV.	

THIS DRAWING IS THE PROPERTY OF HAYES MFG. INC. AND IS LOANED SUBJECT TO THE CONDITION THAT IT SHALL NOT BE REPRODUCED, COPIED, LOANED OR OTHERWISE DISPOSED OF, DIRECTLY OR INDIRECTLY. IT SHALL BE USED AS A MEANS OF REFERENCE TO WORK FURNISHED BY THIS COMPANY ONLY AND IS NOT TO BE SUBMITTED TO OUTSIDE PARTIES FOR EXAMINATION WITHOUT OUR CONSENT.