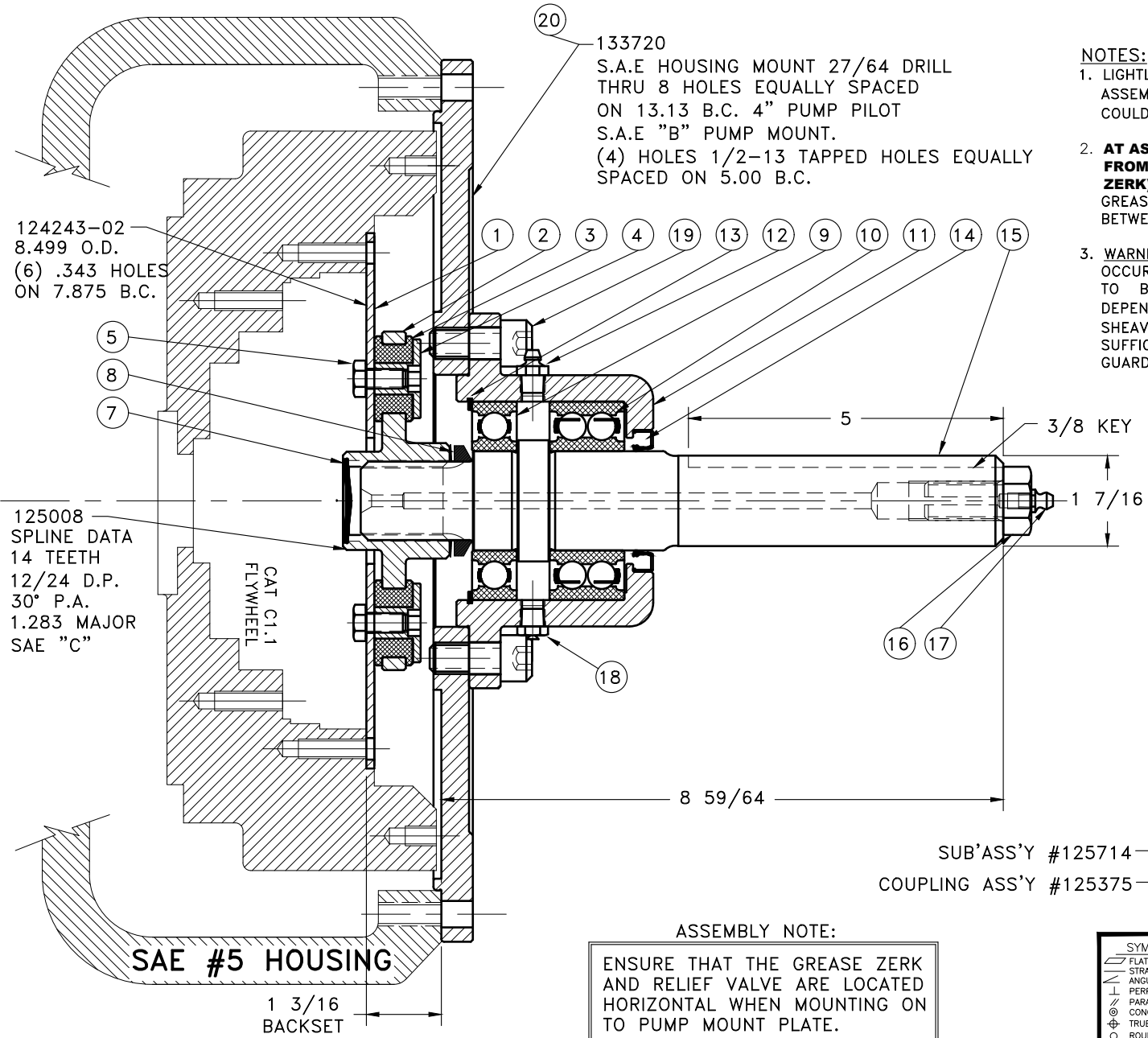


REV	DATE	CHANGE DESCRIPTION	MOD.BY	CK1	CK2



133720
 S.A.E HOUSING MOUNT 27/64 DRILL THRU 8 HOLES EQUALLY SPACED ON 13.13 B.C. 4" PUMP PILOT S.A.E "B" PUMP MOUNT.
 (4) HOLES 1/2-13 TAPPED HOLES EQUALLY SPACED ON 5.00 B.C.

124243-02
 8.499 O.D.
 (6) .343 HOLES ON 7.875 B.C.

125008
 SPLINE DATA
 14 TEETH
 12/24 D.P.
 30° P.A.
 1.283 MAJOR SAE "C"

CAT C1.1
 FLYWHEEL

SAE #5 HOUSING
 1 3/16 BACKSET

NOTES:

- LIGHTLY GREASE INTERNAL AND EXTERNAL AREA OF SPLINE AT ASSEMBLY USING SUPPLIED COUPLING GREASE (OVER GREASING COULD CAUSE A HYDRAULIC TYPE LIFT ON SEALS).
- AT ASSEMBLY GREASE BEARING HOUSING UNTIL PIN EXTENDS FROM PRESSURE RELIEF VALVE (LOCATED 180° FROM GREASE ZERK).** USE OF AN UNLEADED EXTREME PRESSURE LITHIUM GREASE, WITH NLGI NO.2 GRADE IS RECOMMENDED. RUN TIME BETWEEN GREASINGS NOT TO EXCEED 800 HOURS.
- WARNING!!!** INJURY OR DEATH FROM A ROTATING STUB SHAFT CAN OCCUR IF A CONDITION EXISTS WHICH WOULD CAUSE THE SHAFT TO BREAK OR COME APART FROM ANY PART OF THE ASSEMBLY. DEPENDING UPON THE APPLICATION (FOR EXAMPLE, FAN, PULLEY, SHEAVE, ETC.), THE AREA AROUND THE STUB SHAFT MUST BE SUFFICIENTLY GUARDED SO THAT IN THE EVENT OF FAILURE, THE GUARD WILL CONTAIN ANY AIRBORNE PARTS.

SIMILAR TO: 125726

QTY.	DESCRIPTION	PART NUMBER	QTY.
1	PUMP MOUNT PLATE	133720	1
4	1/2-13x1-1/8 SHCS	19	4
1	RELIEF VALVE	18	1
1	GREASE ZERK	17	1
1	SPECIAL 5/8-11 HHB	16	1
1	SPLINED SHAFT	15	1
1	SEAL	14	1
1	SNAP RING	13	1
1	GREASE ZERK	12	1
1	BEARING HOUSING	11	1
1	DOUBLE BEARING	10	1
1	BEARING	9	1
1	V-RING	8	1
1	GREASE PLUG	7	1
1	GREASE	6	1
8	5/16-24x5/8 HHB	5	8
8	THREADED BUSHING	4	8
8	NEOPRENE INSERT	3	8
1	COUPLING HUB	2	1
1	FLYWHEEL PLATE	1	1

SUB'ASS'Y #125714
 COUPLING ASS'Y #125375

ASSEMBLY NOTE:

ENSURE THAT THE GREASE ZERK AND RELIEF VALVE ARE LOCATED HORIZONTAL WHEN MOUNTING ON TO PUMP MOUNT PLATE.

SYMBOLS	DET.	PART NUMBER	DESCRIPTION	QTY.
▭ FLATNESS ▭ STRAIGHTNESS ▭ ANGULARITY ▭ PERPENDICULARITY ▭ PARALLELISM ⊙ CONCENTRICITY ⊕ TRUE POSITION ○ ROUNDNESS ○ CIRCULAR RUN OUT ▭ TOTAL RUN OUT ▭ CYLINDRICITY ▭ FINISH	DO NOT SCALE DRAWING TOLERANCES UNLESS OTHERWISE SPECIFIED 1/32" MAXIMUM ANGLE ±1/2° FRACTION ±1/32 DECIMAL .00 ±.01 .0000 ±.0005		HAYES MANUFACTURING INC. ®	
CLASS BS ASSY	MAKE: <input checked="" type="checkbox"/> BUY: <input type="checkbox"/>	DRAWN BY JESSE	DATE 02-05-2020	DRAWING NO. 133717
DESCRIPTION CAT C1.1,5,1-7/16,5	DESIGN LEAD SIETING	SCALE	SHEET OF REV.	

THIS DRAWING IS THE PROPERTY OF HAYES MFG. INC. AND IS LOANED SUBJECT TO THE CONDITION THAT IT SHALL NOT BE REPRODUCED, COPIED, LOANED OR OTHERWISE DISPOSED OF, DIRECTLY OR INDIRECTLY. IT SHALL BE USED AS A MEANS OF REFERENCE TO WORK FURNISHED BY THIS COMPANY ONLY AND IS NOT TO BE SUBMITTED TO OUTSIDE PARTIES FOR EXAMINATION WITHOUT OUR CONSENT.