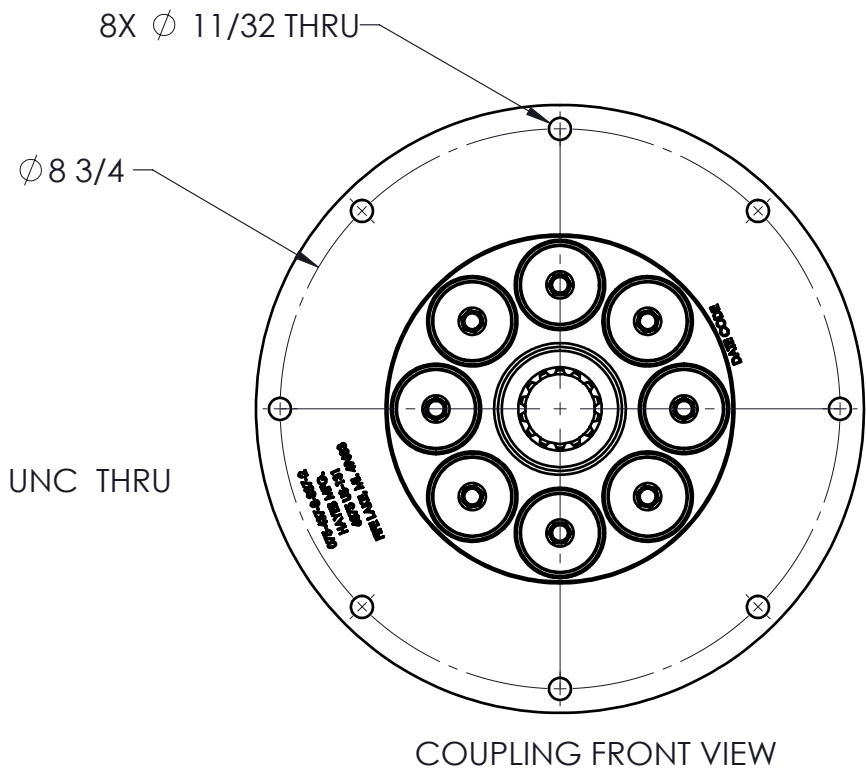
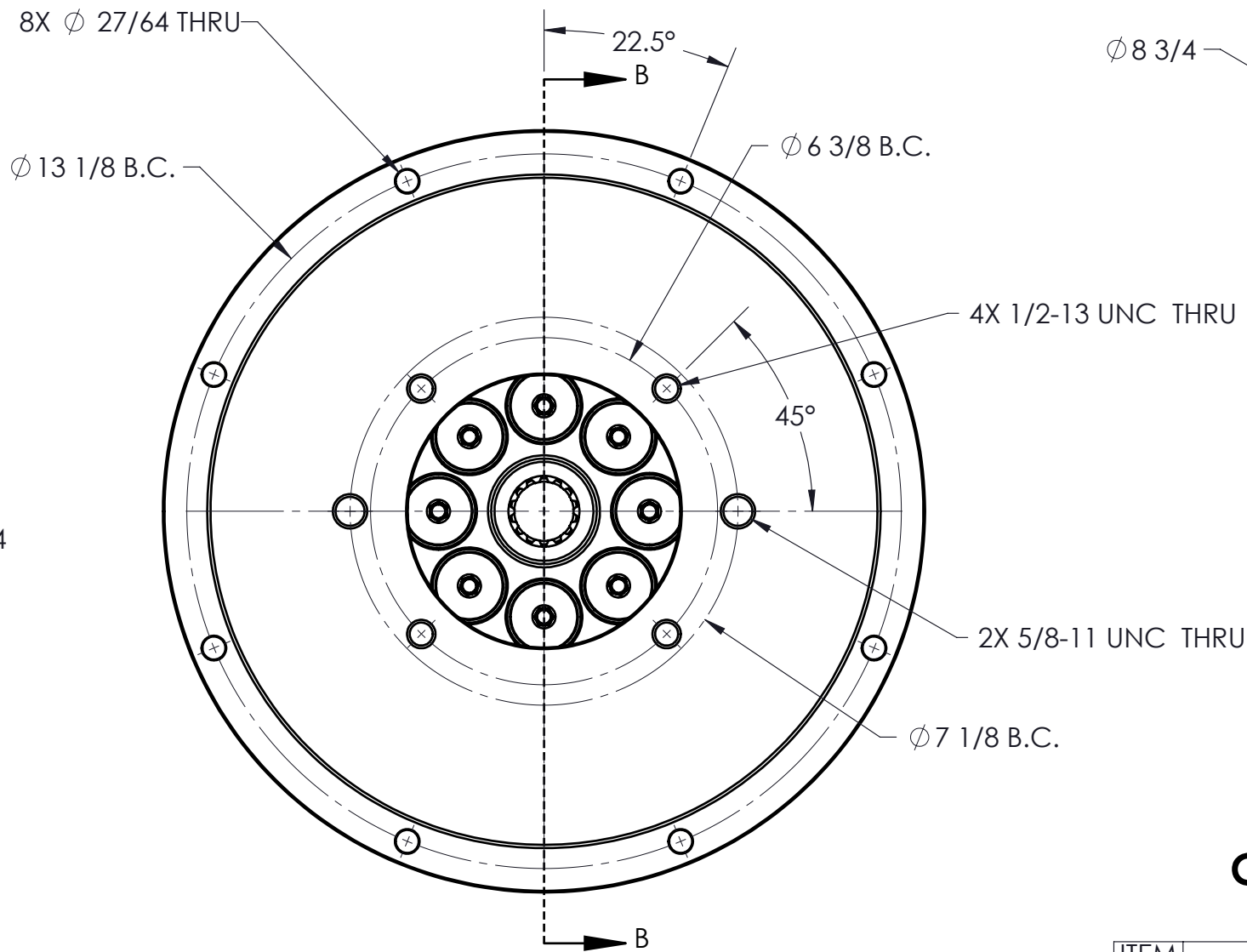
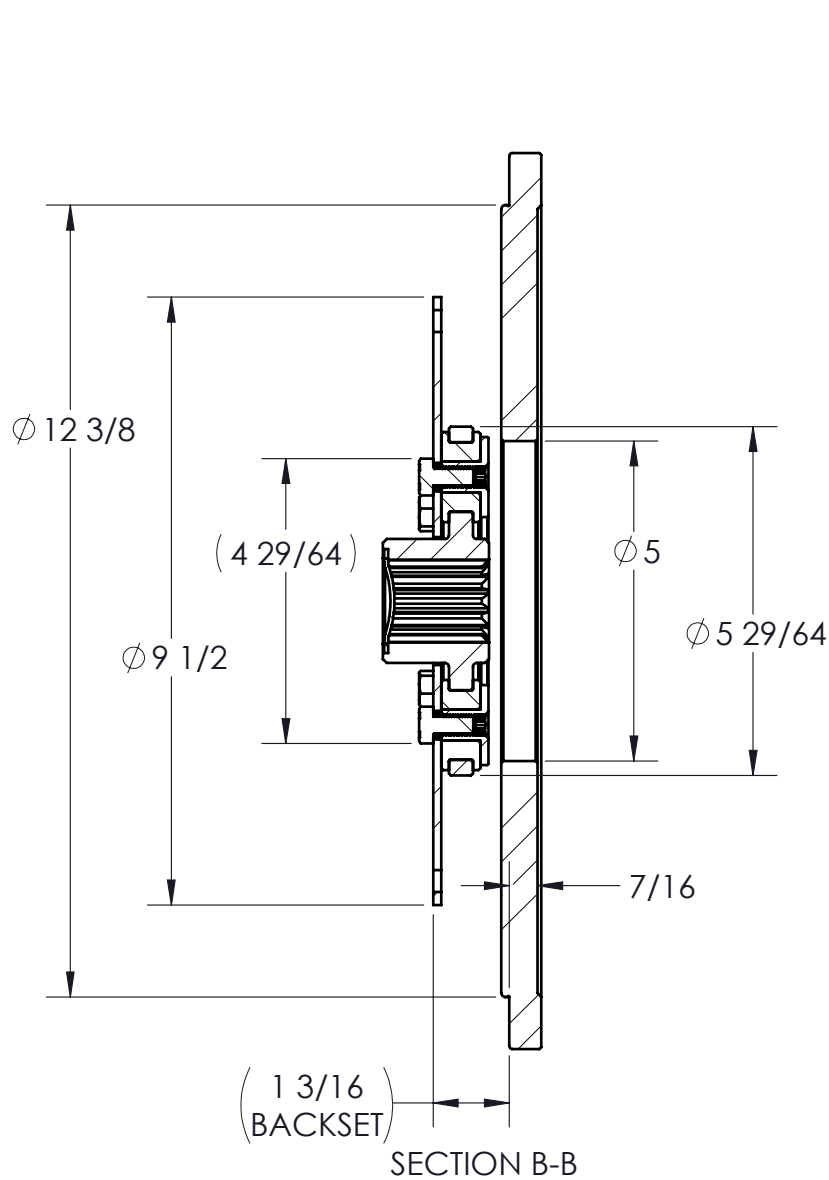


CUSTOMER DRAWING

REVISIONS						
ZONE	REV.	DESCRIPTION	DATE	APR 1	APR 2	DCR #



COUPLING IS NOT SERVICEABLE

PUMP DRIVE SPECS	
FLYWHEEL	SAE 7.5
HOUSING	SAE 5
PUMP FLANGE	SAE C 2&4-BOLT
PUMP SHAFT	14T 12/24 "C"
HP RATING (@1800 RPM)	75

PROPRIETARY AND CONFIDENTIAL

THE INFORMATION CONTAINED IN THIS DRAWING IS THE SOLE PROPERTY OF HAYES MANUFACTURING. ANY REPRODUCTION IN PART OR AS A WHOLE WITHOUT THE WRITTEN PERMISSION OF HAYES MANUFACTURING IS PROHIBITED.

UNLESS OTHERWISE SPECIFIED: DIMENSIONS ARE IN INCHES TOLERANCES: FRACTIONAL: $\pm 1/32$ ANGULAR: MACH $\pm 1/2^\circ$ TWO DECIMAL: ± 0.01 THREE DECIMAL: ± 0.005 FOUR DECIMAL: ± 0.0005			SYMBOLS \square FLATNESS \bigcirc ROUNDNESS \parallel PARALLELISM ϕ DIAMETER "R" RADIUS \odot CONCENTRICITY \oplus TRUE POSITION \perp PERPENDICULARITY CIR CIRCULAR RUN OUT TOTAL TOTAL RUN OUT \sqcup COUNTERBORE ∇ COUNTERSINK HOLE DEPTH SYMMETRIC		
CLASS	SAE 7.5		DRAWN	NAME	DATE
DESCRIPTION	7-1/2,5,14T12/24,C24,75		PCM APPR.	SIETING	1/13/2023
MAKE	WEIGHT	HEAT TREAT	ENG APPR.		
X	26.0 LB		SHIP. APPR.		
BUY	VOLUME	FINISH	QA APPR.		
	CU.IN.		MATERIAL		

ITEM NO.	PART NUMBER	DESCRIPTION	QTY.
1	124437	FLYWHEEL COUPLING ASSY.	1
2	123845-16	PUMP MOUNT PLATE	1

TITLE: FLYWHEEL COUPLING ASM W/ PUMP MOUNT PLATE		
DWG. NO. 134671		REV
DO NOT SCALE		SHEET 1 OF 4