

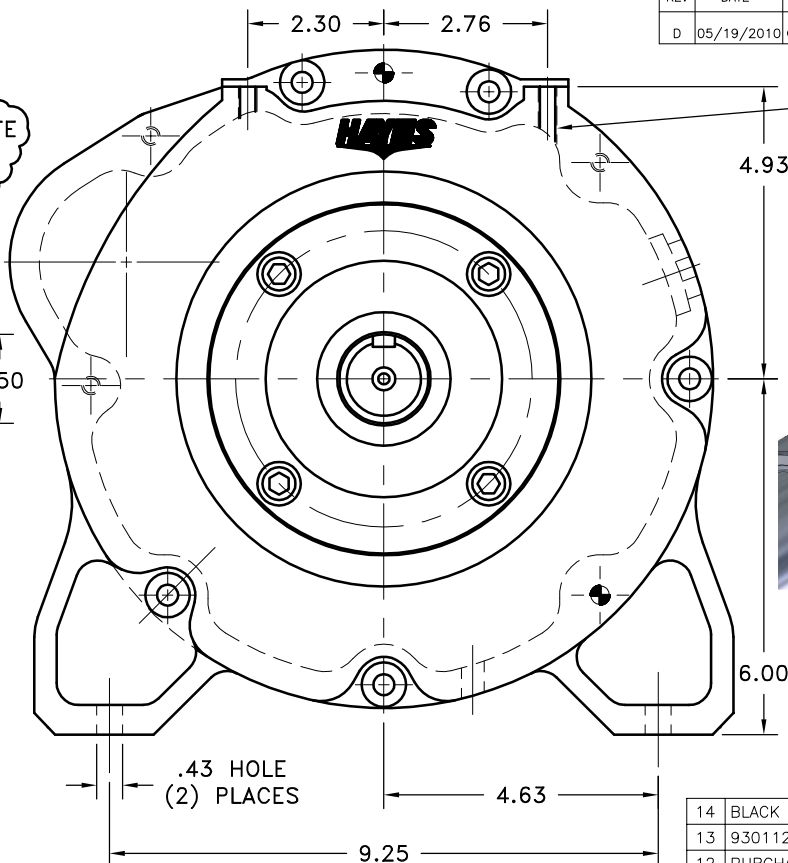
INSTALL HUB ON  
SHAFT AS SHOWN

#### NOTES:

- WARNING!!!** INJURY OR DEATH FROM A ROTATING STUB SHAFT CAN OCCUR IF A CONDITION EXISTS WHICH WOULD CAUSE THE SHAFT TO BREAK OR COME APART FROM ANY PART OF THE ASSEMBLY. DEPENDING UPON THE APPLICATION (FOR EXAMPLE, FAN, PULLEY, SHEAVE, ETC.), THE AREA AROUND THE STUB SHAFT MUST BE SUFFICIENTLY GUARDED SO THAT IN THE EVENT OF FAILURE, THE GUARD WILL CONTAIN ANY AIRBORNE PARTS.

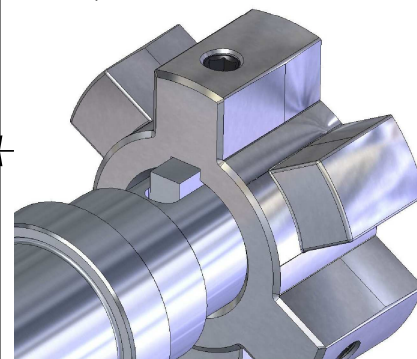
#### ASSEMBLY NOTE:

**MUST USE DOUBLE SEALED BEARINGS.**



M8 x 1.25 TAPPED HOLES  
(2) PLACES

HUB/SHAFT ORIENTATION



14	BLACK PLUG	C-32-U-200 OR C36-2-U-2000	1
13	930112	BOLT KIT	1
12	PURCHASE	5/16 DIA x 1/2 DOWEL PIN	2
11	930114-08	HOUSING	1
10	740000	1/2-13 SHCS	4
9	98481A245	1011 WOODRUFF KEY	1
8	CRW1R15830	SEAL	1
7	RR-314	SPIROLOX RETAINING RING	1
6	5208-2RS	DOUBLE BEARING	1
5	6208-2RS	BEARING	1
4	128498	BEARING HOUSING	1
3	150000-02	STUB SHAFT	1
2	HB3-43	HEX~FLX DRIVE HUB	1
1	B-SMN	HEX~FLX DRIVE PLATE	1

150-L

B-SMN-HB3-43

SYMBOLS	DET.	PART NUMBER	DESCRIPTION	QTY.
FLATNESS STRAIGHTNESS ANGULARITY PERPENDICULARITY PARALLELISM CONCENTRICITY TRUE POSITION ROUNDNESS CIRCULAR RUN OUT TOTAL RUN OUT CYLINDRICITY FINISH	DO NOT SCALE DRAWING TOLERANCES UNLESS OTHERWISE SPECIFIED .125" MAXIMUM ANGLE ±1/2" FRACTION ±1/32 DECIMAL .00 ±.01 .000 ±.005 .0000 ±.0005	MAKE: <input type="checkbox"/> BUY: <input type="checkbox"/>	<b>HAYES</b> MANUFACTURING INC. ® <b>TITLE</b> KUBOTA MINI HEX~FLX STUB SHAFT <b>MATERIAL</b>	<b>150-SMN-FT-L</b> SHEET OF REV.
CLASS	DESCRIPTION	DRAWN BY SIETING	DATE 09-20-05	DRAWING NO.
		CHECKED BY RJH	SCALE	

THIS DRAWING IS THE PROPERTY OF HAYES MFG. INC. AND IS LOANED SUBJECT TO THE CONDITION THAT IT SHALL NOT BE REPRODUCED, COPIED, LOANED OR OTHERWISE DISPOSED OF, DIRECTLY OR INDIRECTLY. IT SHALL BE USED AS A MEANS OF REFERENCE TO WORK FURNISHED BY THIS COMPANY ONLY AND IS NOT TO BE SUBMITTED TO OUTSIDE PARTIES FOR EXAMINATION WITHOUT OUR CONSENT.