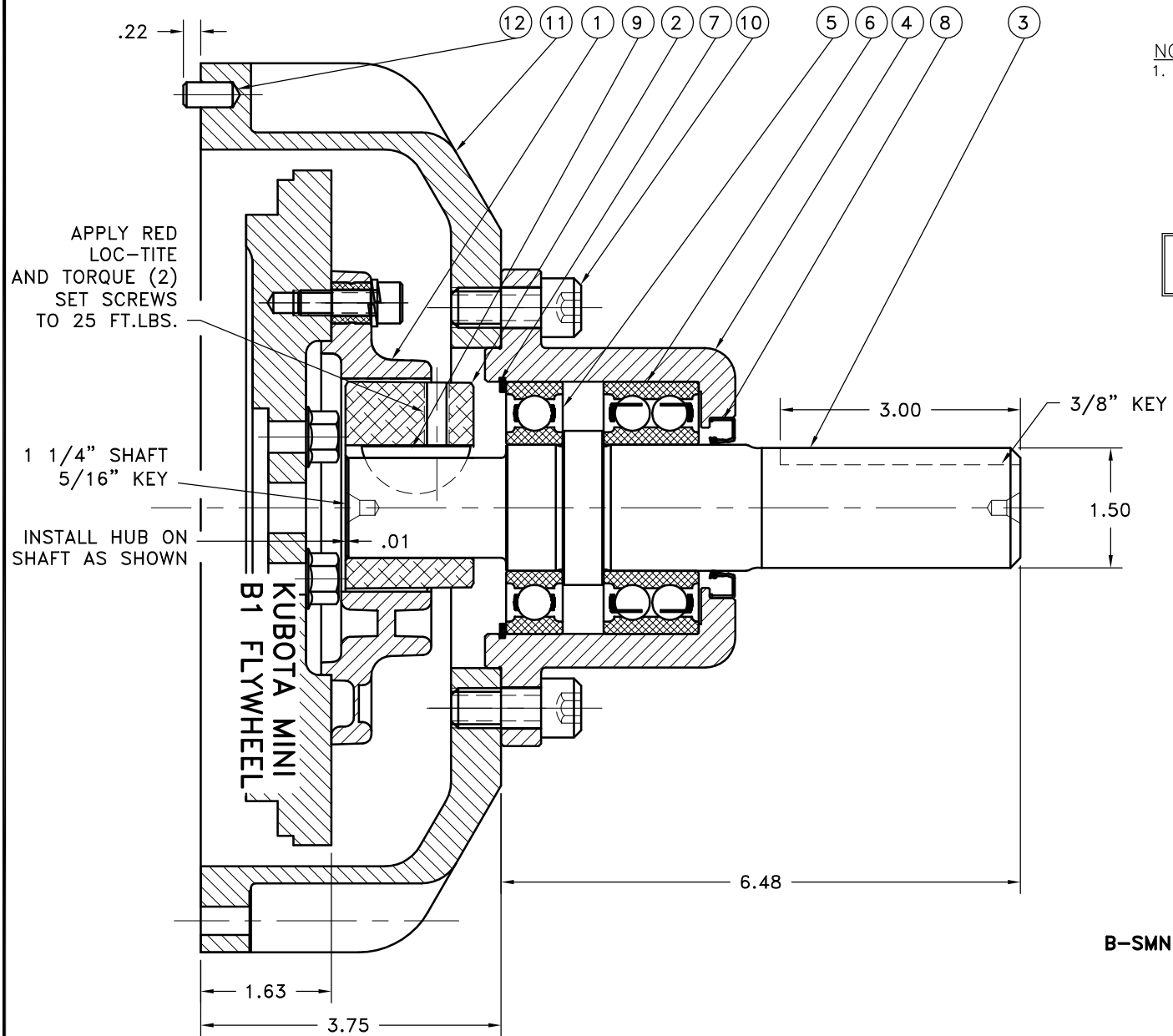


REV	DATE	CHANGE DESCRIPTION	MOD.BY	CK1	CK2
D	05/20/2010	CHANGED TO 1011 WOODRUFF KEY	ZS	RJH	



APPLY RED LOC-TITE AND TORQUE (2) SET SCREWS TO 25 FT.LBS.

1 1/4" SHAFT
5/16" KEY

INSTALL HUB ON SHAFT AS SHOWN

KUBOTA MINI
B1 FLYWHEEL

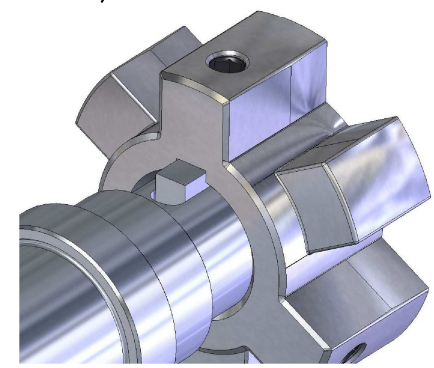
NOTES:

- WARNING!!!** INJURY OR DEATH FROM A ROTATING STUB SHAFT CAN OCCUR IF A CONDITION EXISTS WHICH WOULD CAUSE THE SHAFT TO BREAK OR COME APART FROM ANY PART OF THE ASSEMBLY. DEPENDING UPON THE APPLICATION (FOR EXAMPLE, FAN, PULLEY, SHEAVE, ETC.), THE AREA AROUND THE STUB SHAFT MUST BE SUFFICIENTLY GUARDED SO THAT IN THE EVENT OF FAILURE, THE GUARD WILL CONTAIN ANY AIRBORNE PARTS.

ASSEMBLY NOTE:

MUST USE DOUBLE SEALED BEARINGS.

HUB/SHAFT ORIENTATION



QTY.	DESCRIPTION	PART NUMBER	DET.
1	BOLT KIT	930112	13
2	5/16 DIA x 1/2 DOWEL PIN	PURCHASE	12
1	HOUSING	930115-01	11
4	1/2-13 SHCS	740000	10
1	1 3/8 x 5/16 WOODRUFF KEY	23-1011	9
1	SEAL	CRW1R15830	8
1	SPIROLOX RETAINING RING	RR-314	7
1	DOUBLE BEARING	5208-2RS	6
1	BEARING	6208-2RS	5
1	BEARING HOUSING	128498	4
1	STUB SHAFT	150000-01	3
1	HEX~FLX DRIVE HUB	HB3-43	2
1	HEX~FLX DRIVE PLATE	B-SMN	1

150-S

B-SMN-HB3-43

SYMBOLS	DET.	PART NUMBER	DESCRIPTION	QTY.
/ FLATNESS - STRAIGHTNESS L ANGULARITY L PERPENDICULARITY // PARALLELISM @ CONCENTRICITY ⊕ TRUE POSITION ○ ROUNDNESS ⊙ CIRCULAR RUN OUT ⊖ TOTAL RUN OUT / CYLINDRICITY ✓ FINISH	DO NOT SCALE DRAWING TOLERANCES UNLESS OTHERWISE SPECIFIED 125 MAXIMUM ANGLE ±1/2° FRACTION ±1/32 DECIMAL .00 ±.01 .000 ±.005 .0000 ±.0005		HAYES MANUFACTURING INC. ® TITLE KUBOTA MINI HEX~FLX STUB SHAFT MATERIAL	
CLASS	MAKE: <input type="checkbox"/> BUY: <input type="checkbox"/>	DRAWN BY	DATE	DRAWING NO.
DESCRIPTION		SIETING	09-20-05	150-SMN-S
		CHECKED BY	SCALE	SHEET OF REV.
		RJH		

THIS DRAWING IS THE PROPERTY OF HAYES MFG. INC. AND IS LOANED SUBJECT TO THE CONDITION THAT IT SHALL NOT BE REPRODUCED, COPIED, LOANED OR OTHERWISE DISPOSED OF, DIRECTLY OR INDIRECTLY. IT SHALL BE USED AS A MEANS OF REFERENCE TO WORK FURNISHED BY THIS COMPANY ONLY AND IS NOT TO BE SUBMITTED TO OUTSIDE PARTIES FOR EXAMINATION WITHOUT OUR CONSENT.