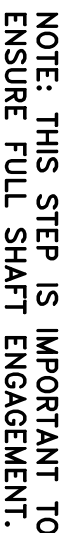


SPECIAL FOR DF972 - WG972

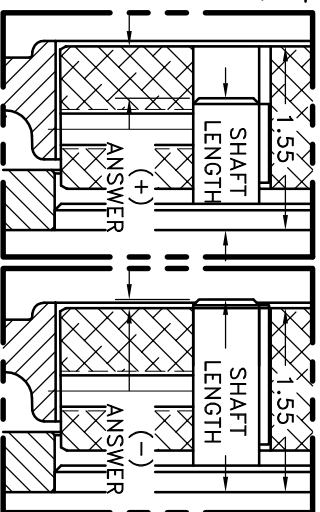
NOTES:

- # 1. HOUSING FOR KUBOTA ENGINES DF972 - WG972.

IMPORTANT INSTALLATION NOTE!!!!!!
IMPROPER INSTALLATION OF HUB COULD CAUSE
PREMATURE WEAR AND OR FAILURE. IF YOU HAVE
A SHAFT LENGTH OTHER THAN THOSE SHOWN HERE
PLEASE CONTACT DISTRIBUTOR OR FACTORY FOR
FURTHER INFORMATION. HUB SET SCREWS MUST
BE PROPERLY TORQUED TO 20 FT.LBS. EACH.
PLEASE CONTACT DISTRIBUTOR OR FACTORY FOR ANY
FURTHER QUESTIONS.



HEX~FLX COUPLING
B-SMN-HB1-07



EXAMPLE:
1.55 – SHAFT LENGTH = HUB PRESET

IF YOUR ANSWER IS (+) SHAFT IS INSIDE OF HUB, IF
YOUR ANSWER IS (-) SHAFT STICKS OUT OF HUB.
(SEE BOXES)

THIS DRAWING IS THE PROPERTY OF HATES MFG. INC. AND IS LOANED SUBJECT TO THE CONDITION THAT IT SHALL NOT BE REPRODUCED, COPIED, LOANED OR OTHERWISE DISPOSED OF, DIRECTLY OR INDIRECTLY. IT SHALL BE USED AS A MEANS OF REFERENCE TO WORK FURNISHED BY THIS COMPANY ONLY AND IS NOT TO BE SUBMITTED TO OUTSIDE PARTIES FOR EXAMINATION WITHOUT OUR CONSENT.

6	972024	BOLT KIT	1
5	127695	HOLLOW DOWEL BUSHING	1
4	PURCHASE	5/16 DIA x 1/2 DOWEL PIN	2
3	930114-01	HOUSING	1
2	HB1-07	HEX~FLX HUB	1
1	B-SNUN	HEX~FLX DRIVE PLATE	1

SYMBOLS		DET.	PART NUMBER	DESCRIPTION	QTY.
▮ FLATNESS	DO NOT SCALE				
▮ STRAIGHTNESS	DRAWING				
▮ ANGLE					
▮ SQUARENESS	TOLERANCES UNLESS OTHERWISE SPECIFIED				
⊙ CONCENTRICITY	1/2" MAXIMUM				
⊕ TRUE POSITION	ANGLE 1/16"				
⊖ ROUNDRNESS	FACE 1/32				
○ CIRCULAR RUN OUT	PERIM. .001				
○ TOTAL RUN OUT	.002 ± .005				
○ CYLINDRICITY	.000 ± .005				
✓ FINISH	.0000 ± .0005				
UNLESS OTHERWISE SPECIFIED -					
REMOVE FIRST THREAD					
ON ALL PIPED HOLES					
BREAK ALL SHAFT CORNERS .010 TO .020					
STAMP OR MARK DRAWING NO.					
TITLE					
KUBOTA MINI HEX-FLX ASSY					
MANUFACTURING INC. ®					
DRAWN BY					
DATE					
02-20-07					
SHEETING					
CHECKED BY					
SCALE					
003-0-HB1-07-A2					
SHEET					
OF					
REV.					