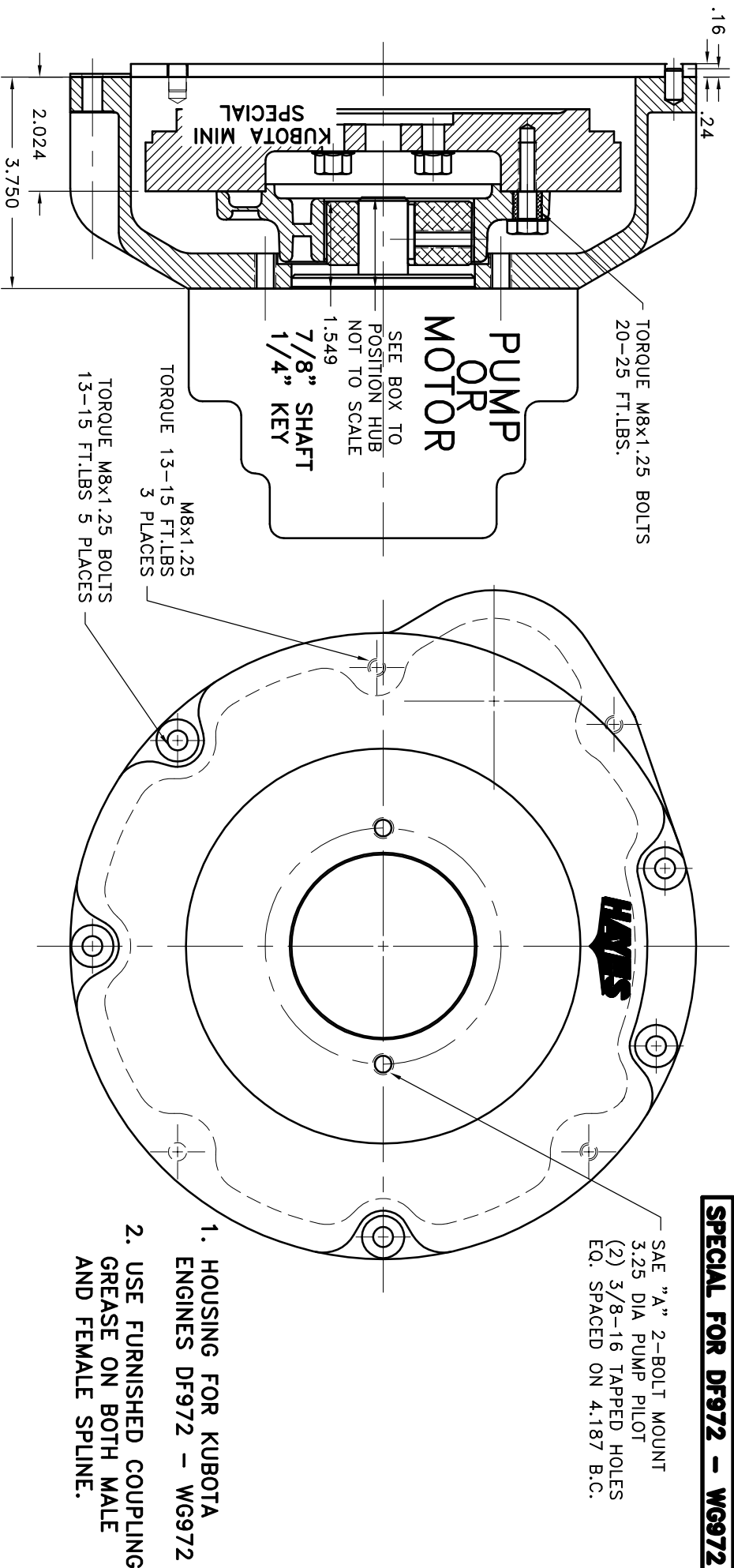


REV	DATE	CHANGE DESCRIPTION	MOD BY	CK1	CK2
A1	10/03/2006	FIXED HOUSING DESCRIPTION.	ZS	RJH	IHM

SPECIAL FOR DF972 – WG972

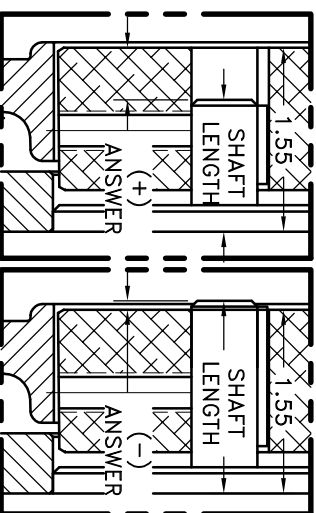


NOTE: REMOVE HUB FROM ASSY, PRESET HUB ON SHAFT & REASSEMBLE USING NUT & BOLT GRADE LOC-TITE ON SET SCREWS. SHAFT SHOULD HAVE A MINIMUM OF 3/4" OF ENGAGEMENT IF NOT CONTACT FACTORY FOR RECOMMENDATIONS. TO GET HUB PRESET USE THIS EQUATION:

EXAMPLE:
1.55 – SHAFT LENGTH = HUB PRESET
IF YOUR ANSWER IS (+) SHAFT IS INSIDE OF HUB, IF YOUR ANSWER IS (–) SHAFT STICKS OUT OF HUB. (SEE BOXES)

THIS DRAWING IS THE PROPERTY OF HAYES MFG. INC. AND IS LOANED SUBJECT TO THE CONDITION THAT IT WILL NOT BE REPRODUCED, COPIED, OR IN ANY MANNER DISSEMINATED WITHOUT THE WRITTEN CONSENT OF HAYES MFG. INC. IT SHALL BE USED AS A MEANS OF REFERENCE TO WORK FURNISHED BY THIS COMPANY ONLY, AND IS NOT TO BE SUBMITTED TO OUTSIDE PARTIES FOR EXAMINATION WITHOUT OUR CONSENT.

NOTE: THIS STEP IS IMPORTANT TO ENSURE FULL SPLINE ENGAGEMENT.



1. HOUSING FOR KUBOTA ENGINES DF972 – WG972
2. USE FURNISHED COUPLING GREASE ON BOTH MALE AND FEMALE SPLINE.

6	930100-13	HOUSING	1
5	972024	BOLT KIT	1
4	127695	HOLLOW DOWEL BUSHING	1
3	PURCHASE	5/16 DIA x 1/2 DOWEL PIN	2
2	HB1-41	HEX~FLX HUB	1
1	B-SMN	HEX~FLX FLYWHEEL PLATE	1

SYMBOLS	DO NOT SCALE	TITLE
FLATNESS	DRAWING	KUBOTA MINI HEX~FLX ASSY
STRAIGHTNESS		
ANGULARITY		
PARALLELISM		
PERPENDICULARITY		
CONCENTRICITY		
ROUNDNESS		
CIRCULAR RUN OUT		
TOTAL RUN OUT		
CYLINDRICITY		
FINISH		
UNLESS OTHERWISE SPECIFIED –		
REMOVE FIRST THREE DIGITS OF PART NO. TO 020		
BREAK ALL SHARP CORNERS .010 TO .020		
STAMP OR MARK DRAWING NO.		

DATE	DRAWN BY	CHECKED BY	SCALE	DRAWING NO.	SHEET	REV.
04-26-06				004-0-HB1-41-A2	OF	