

TORQUE M10 BOLTS
29-33 FT.LBS.

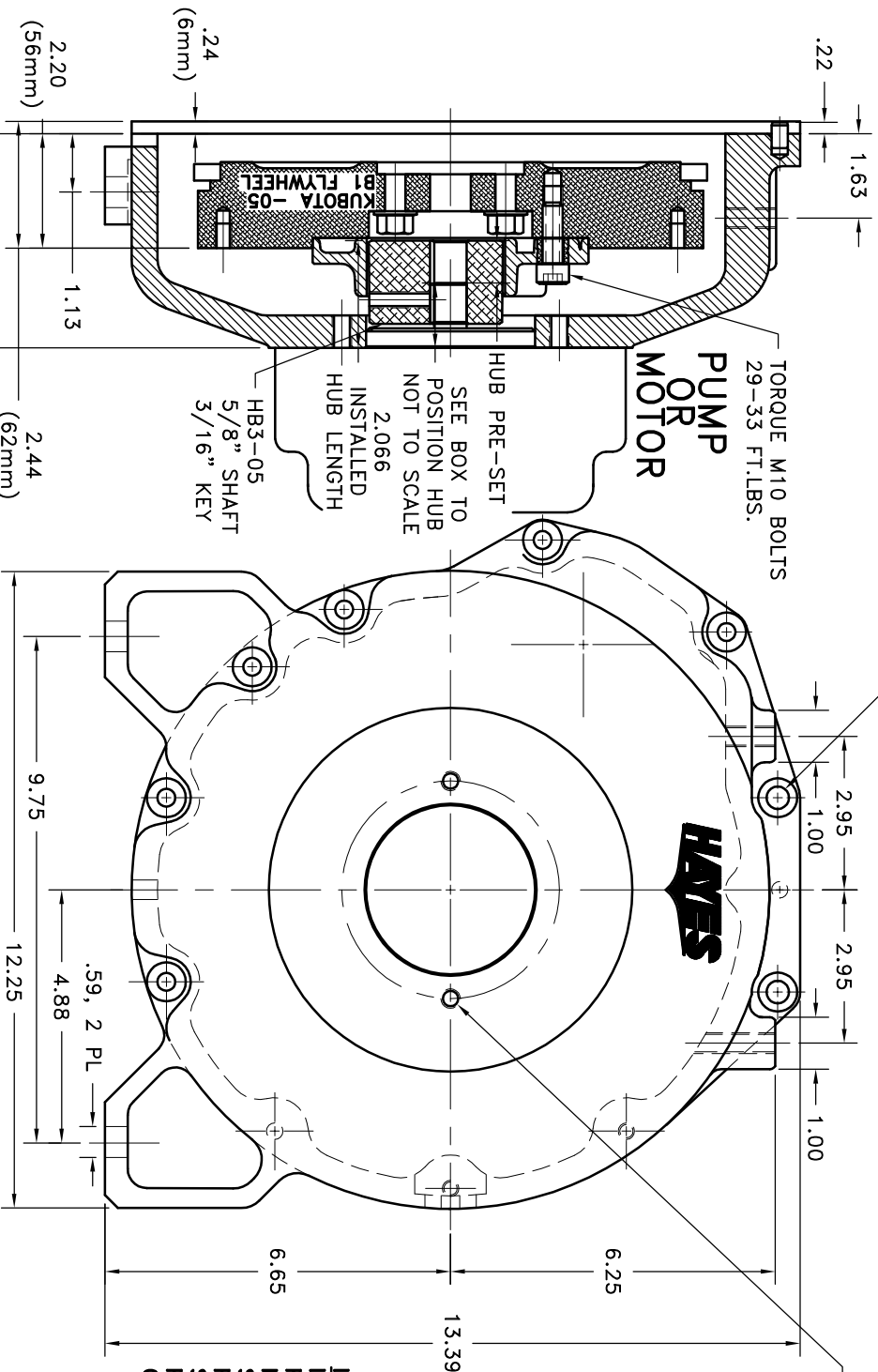
- S.A.E. A 2-BOLT MOUNT
3.25 PILOT
(2) 3/8-16 TAPPED HOLES
EQ. SPACED ON A 4.18 B.C.

NOTES:

1. HOUSING FOR KUBOTA ENGINES
D-905, D1005-B, D1105-B, V1205-B,
V1305-P, AND V1505-B.

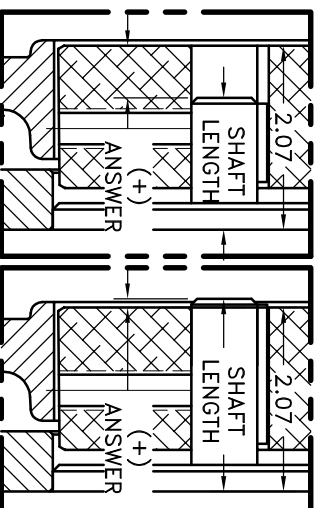
IMPORTANT INSTALLATION NOTE!!!!

IMPROPER INSTALLATION OF HUB COULD CAUSE PREMATURE WEAR AND OR FAILURE. IF YOU HAVE A SHAFT LENGTH OTHER THAN THOSE SHOWN HERE PLEASE CONTACT DISTRIBUTOR OR FACTORY FOR FURTHER INFORMATION. HUB SET SCREWS MUST BE PROPERLY TORQUED TO 20 FT.LBS. EACH. PLEASE CONTACT DISTRIBUTOR OR FACTORY FOR ANY FURTHER QUESTIONS.



NOTE: THIS STEP IS IMPORTANT TO ENSURE FULL SPLINE ENGAGEMENT.

HEX~FLX COUPLING ASS'Y
B-S05-HB3-05



NOTE: REMOVE HUB FROM ASS'Y, PRESET HUB ON SHAFT & RESEMBLE USING NUT & BOLT GRADE LOC-TITE ON SET SCREWS. SHAFT SHOULD HAVE A MINIMUM OF 3/4" ENGAGEMENT IF NOT CONTACT FACTORY FOR RECOMMENDATIONS. TO GET HUB PRESET USE THIS EQUATION:

EXAMPLE:
2.07 – SHAFT LENGTH = HUB PRESET

IF YOUR ANSWER IS (+) SHAFT IS INSIDE OF HUB, IF
YOUR ANSWER IS (-) SHAFT STICKS OUT OF HUB.
(SEE BOXES)

THIS DRAWING IS THE PROPERTY OF HATES MFG. INC. AND IS LOANED SUBJECT TO THE CONDITION THAT IT SHALL NOT BE REPRODUCED, COPIED, LOANED OR OTHERWISE DISPOSED OF, DIRECTLY OR INDIRECTLY. IT SHALL BE USED AS A MEANS OF REFERENCE TO WORK FURNISHED BY THIS COMPANY ONLY AND IS NOT TO BE SUBMITTED TO OUTSIDE PARTIES FOR EXAMINATION WITHOUT OUR CONSENT.

SYMBOLS		QTY.
DET.	PART NUMBER	DESCRIPTION
	10 952182	BOLT KIT 1
	9 PURCHASE	5/16 DIA x 1/2 DOWEL PIN 2
	8 952088-01	HOUSING 1
	2 HB3-05	HEX~FLX HUB 1
	1 B-S05	HEX~FLX DRIVE PLATE 1



HAYES
MANUFACTURING

FILE KUBOTA -05 HEX~FLX ASS'Y

MATERIAL

--	--

DRAWN BY	DATE	DRAWING NO.
----------	------	-------------

SIETING	11-08-06	005-0-H
CHECKED BY	SCALE	

CHECKED BY	SCALE	
R/H		SHEET

COPYRIGHT ©2000–2007 by Hayes Manufacturing, Inc. All rights reserved