

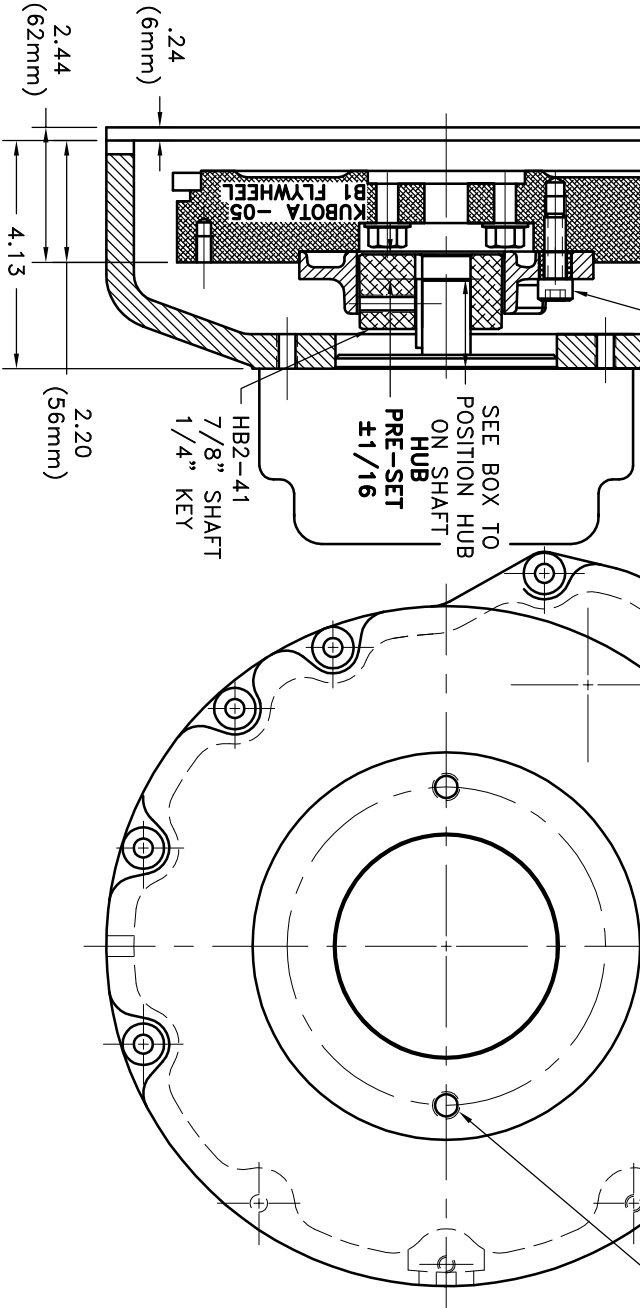
REV	DATE	CHANGE DESCRIPTION	MOD BY	CK1	CK2

TORQUE M10 BOLTS  
29-33 FT.LBS.

S.A.E. B 2-BOLT MOUNT  
4.00" PILOT  
(2) 1/2-13 TAPPED HOLES  
EQ. SPACED ON A 5.75 B.C.

.22  
TORQUE M10 BOLTS  
29-33 FT.LBS.

PUMP  
OR  
MOTOR



NOTES:

- HOUSING FOR KUBOTA ENGINES  
D-905, D1005-B, D1105-B, V1205-B,  
V1305-P, AND V1505-B.

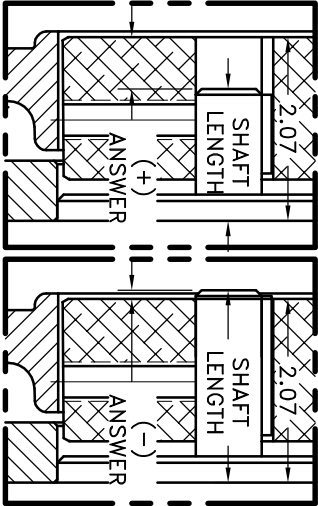
**IMPORTANT INSTALLATION NOTE!!!!**  
THIS PRINT IS FOR LOCATION OF HUB ON  
PARALLEL SHAFTS ONLY. IMPROPER  
INSTALLATION OF HUB COULD CAUSE  
PREMATURE WEAR AND OR FAILURE. USE  
INFORMATION PROVIDE ON THIS SHEET WITH  
YOUR SHAFT LENGTH TO OBTAIN HUB LOCATION  
ON SHAFT. PLEASE CONTACT DISTRIBUTOR OR  
FACTORY FOR FURTHER INFORMATION ON THIS  
PROCESS. HUB SET SCREWS MUST BE  
PROPERLY TORQUED TO 20 FT.LBS. EACH.  
PLEASE CONTACT DISTRIBUTOR OR FACTORY  
FOR ANY FURTHER QUESTIONS.

NOTE: THIS STEP IS IMPORTANT TO  
ENSURE FULL SPLINE ENGAGEMENT.

NOTE: REMOVE HUB FROM ASS'Y, PRESET HUB ON SHAFT  
& REASSEMBLE USING NUT & BOLT GRADE LOC-TITE ON  
SET SCREWS. TORQUE SET SCREWS TO 20 FT.LBS. SHAFT  
SHOULD HAVE A MINIMUM OF 3/4" OF ENGAGEMENT IF  
NOT CONTACT FACTORY FOR RECOMMENDATIONS. TO GET  
HUB PRESET USE THIS EQUATION:

EXAMPLE:  
2.07 – SHAFT LENGTH = HUB PRESET  
IF YOUR ANSWER IS (+) SHAFT IS INSIDE OF HUB, IF  
YOUR ANSWER IS (–) SHAFT STICKS OUT OF HUB.  
(SEE BOXES)

THIS DRAWING IS THE PROPERTY OF HAYES MFG. INC. AND IS LOANED  
TO YOU FOR INFORMATION ONLY. IT IS NOT TO BE REPRODUCED,  
COPIED, OR USED IN ANY MANNER WITHOUT THE WRITTEN  
CONSENT OF HAYES MFG. INC. IT SHALL BE USED AS A MEANS OF REFERENCE TO WORK FURNISHED BY  
THIS COMPANY ONLY, AND IS NOT TO BE SUBMITTED TO OUTSIDE PARTIES  
FOR EXAMINATION WITHOUT OUR CONSENT.



HEX~FLX COUPLING ASS'Y  
B-S05-HB2-41

10	952182	BOLT KIT	1
9	PURCHASE	5/16 DIA x 1/2 DOWEL PIN	2
8	952055-.02	HOUSING	1
2	HB2-41	HEX~FLX HUB	1
1	B-S05	HEX~FLX DRIVE PLATE	1

**HAYES**  
MANUFACTURING INC. ®