

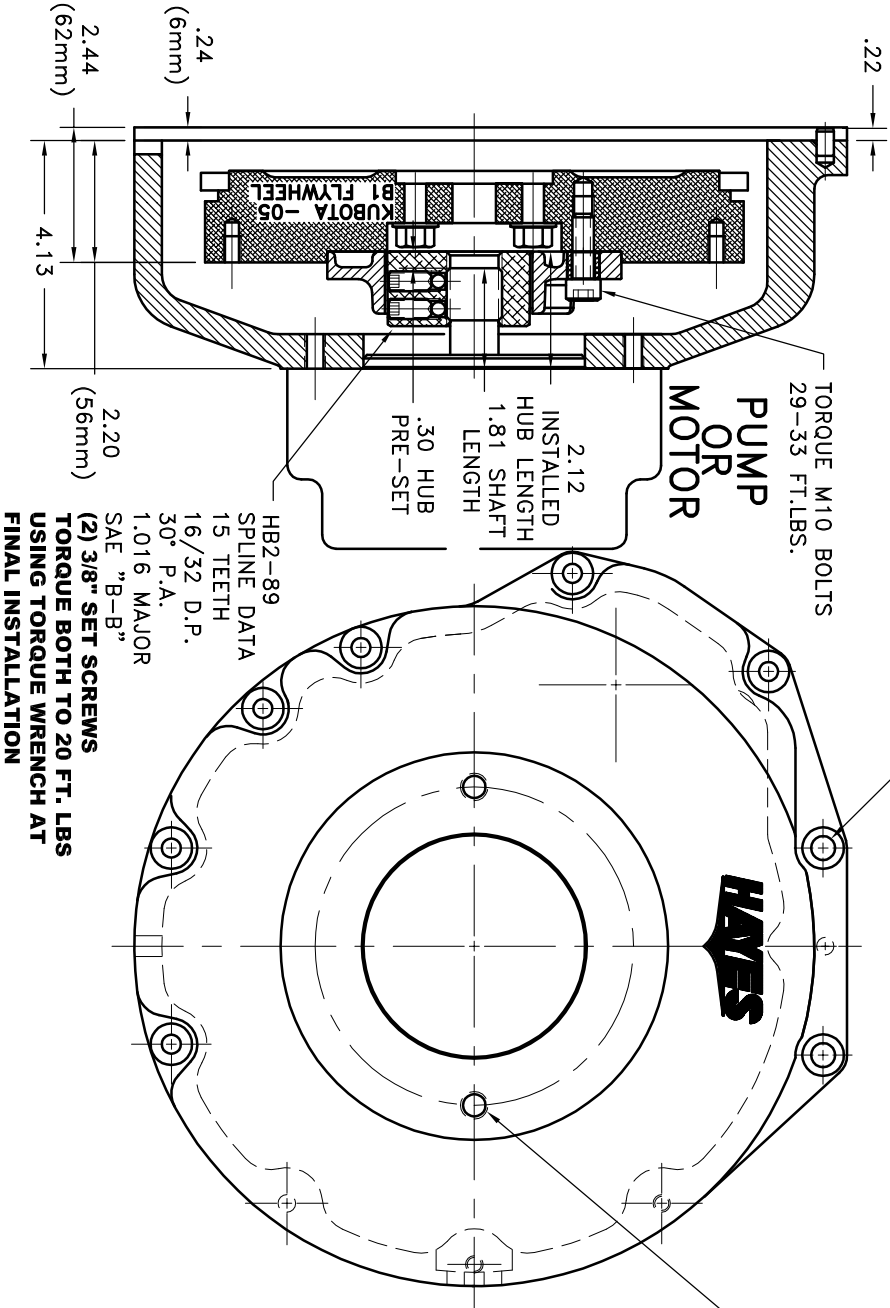
REV	DATE	CHANGE DESCRIPTION	MOD BY	CK1	CK2

TORQUE M10 BOLTS
29-33 FT.LBS.

S.A.E. B 2-BOLT MOUNT
4.00" PILOT
(2) 1/2-13 TAPPED HOLES
EQ. SPACED ON A 5.75 B.C.

TORQUE M10 BOLTS
29-33 FT.LBS.

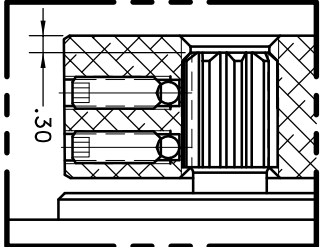
PUMP
OR
MOTOR



HB2-89
SPLINE DATA
15 TEETH
16/32 D.P.
30° P.A.
1.016 MAJOR
SAE "B-B"
(2) 3/8" SET SCREWS
TORQUE BOTH TO 20 FT. LBS
USING TORQUE WRENCH AT
FINAL INSTALLATION

NOTE: THIS STEP IS IMPORTANT TO ENSURE FULL SPLINE ENGAGEMENT.

- 1) PRESET HUB ON SHAFT AS SHOWN.
- 2) IF YOUR PUMP SHAFT VARIES FROM THE DRAWN SHAFT LENGTH, CONTACT FACTORY FOR RECOMMENDATIONS.
- 3) TORQUE BOTH SET SCREWS TO 20 FT.LBS. USING TORQUE WRENCH.
- 4) SHAFT SHOULD HAVE FULL SPLINE ENGAGEMENT INTO HUB, IF NOT CONTACT FACTORY FOR RECOMMENDATIONS (231) 879-3372.



IMPORTANT INSTALLATION NOTE!!!!!! IMPROPER INSTALLATION OF HUB COULD CAUSE PREMATURE WEAR AND OR FAILURE.

IF YOU HAVE QUESTIONS CONCERNING LOCATION OF METAL HUB ON PUMP SHAFT PLEASE CONTACT DISTRIBUTOR OR FACTORY FOR FURTHER INFORMATION.

BOTH HUB SET SCREWS MUST BE PROPERLY TORQUED TO 20 FT.LBS. USING TORQUE WRENCH. PLEASE CONTACT DISTRIBUTOR OR FACTORY FOR ANY FURTHER QUESTIONS.

- NOTES:
1. HOUSING FOR KUBOTA ENGINES D-905, D1005-B, D1105-B, V1205-B, V1305-P, AND V1505-B.

10	952182	BOLT KIT	1
9	PURCHASE	5/16 DIA x 1/2 DOWEL PIN	2
8	952055-02	HOUSING	1
2	HB2-89	HEX~FLX HUB	1
1	B-S05	HEX~FLX DRIVE PLATE	1

SYMBOLS	DO NOT SCALE	DET.	PART NUMBER	DESCRIPTION	QTY.
FLATNESS					
ANGULARITY					
SQUARENESS					
PARALLELISM					
CIRCULAR RUN OUT					
TOTAL RUN OUT					
FINISH					
UNLESS OTHERWISE SPECIFIED -					
REMOVE SHARP CORNERS .010 TO .020					
BREAK ALL SHARP CORNERS .010 TO .020					
STAMP OR MARK DRAWING NO.					

TITLE	KUBOTA -05 HEX~FLX ASSY
MANUFACTURING INC. ®	
DRAWN BY	DATE
CHECKED BY	SCALE
SHEET	DRAWING NO.
OF	006-0-HB2-89-B2
REV.	