

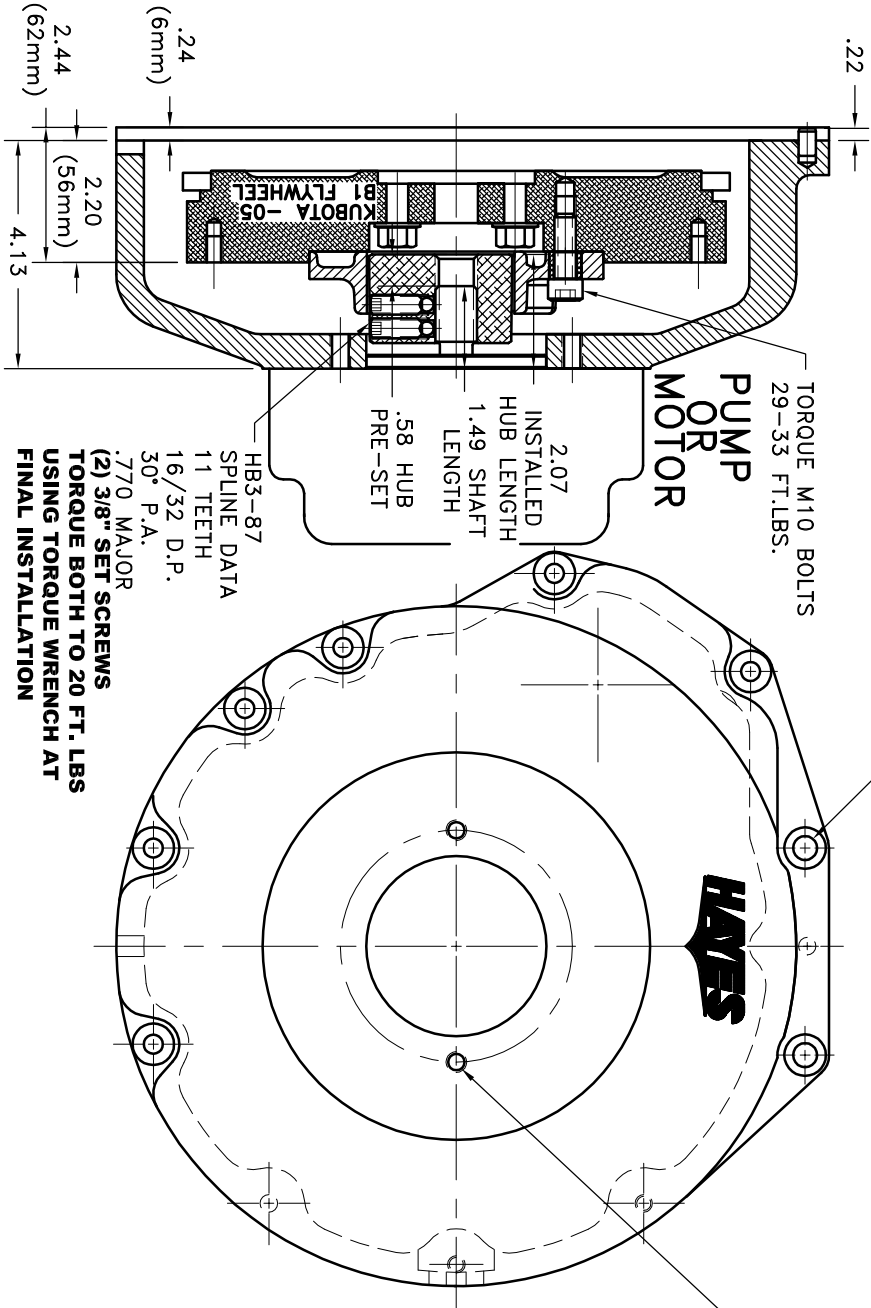
REV	DATE	CHANGE DESCRIPTION	MOD BY	CK1	CK2

TORQUE M10 BOLTS  
29-33 FT.LBS.

S.A.E. A 2-BOLT MOUNT  
3.25" PILOT  
(2) 3/8-16 TAPPED HOLES  
EQ. SPACED ON A 4.19 B.C.

TORQUE M10 BOLTS  
29-33 FT.LBS.

PUMP  
OR  
MOTOR

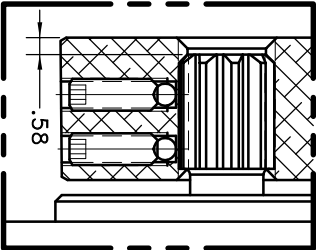


HB3-87  
SPINE DATA  
11 TEETH  
16/32 D.P.  
30° P.A.  
.770 MAJOR  
(2) 3/8" SET SCREWS  
TORQUE BOTH TO 20 FT. LBS  
USING TORQUE WRENCH AT  
FINAL INSTALLATION

### NOTE: THIS STEP IS IMPORTANT TO ENSURE FULL SPLINE ENGAGEMENT.

- 1) PRESET HUB ON SHAFT AS SHOWN.
- 2) IF YOUR PUMP SHAFT VARIES FROM THE DRAWN SHAFT LENGTH, CONTACT FACTORY FOR RECOMMENDATIONS.
- 3) TORQUE BOTH SET SCREWS TO 20 FT.LBS. USING TORQUE WRENCH.
- 4) SHAFT SHOULD HAVE FULL SPLINE ENGAGEMENT INTO HUB, IF NOT CONTACT FACTORY FOR RECOMMENDATIONS (231) 879-3372.

THIS DRAWING IS THE PROPERTY OF HAYES MFG. INC. AND IS LOANED TO YOU FOR YOUR INFORMATION ONLY. IT IS NOT TO BE REPRODUCED, COPIED, OR IN ANY MANNER DISSEMINATED WITHOUT THE WRITTEN CONSENT OF HAYES MFG. INC. IT SHALL BE USED AS A MEANS OF REFERENCE TO WORK FURNISHED BY THIS COMPANY ONLY, AND IS NOT TO BE SUBMITTED TO OUTSIDE PARTIES FOR EXAMINATION WITHOUT OUR CONSENT.



### IMPORTANT INSTALLATION NOTE!!!!

IMPROPER INSTALLATION OF HUB COULD CAUSE PREMATURE WEAR AND OR FAILURE.  
IF YOU HAVE QUESTIONS CONCERNING LOCATION OF METAL HUB ON PUMP SHAFT PLEASE CONTACT DISTRIBUTOR OR FACTORY FOR FURTHER INFORMATION.

BOTH HUB SET SCREWS MUST BE PROPERLY TORQUED TO 20 FT.LBS. USING TORQUE WRENCH. PLEASE CONTACT DISTRIBUTOR OR FACTORY FOR ANY FURTHER QUESTIONS.

- NOTES:
1. HOUSING FOR KUBOTA ENGINES D-905, D1005-B, D1105-B, V1205-B, V1305-P, AND V1505-B.

10	952182	BOLT KIT	1
9	PURCHASE	5/16 DIA x 1/2 DOWEL PIN	2
8	952055-01	HOUSING	1
2	HB3-87	HEX~FLX HUB	1
1	B-S05	HEX~FLX DRIVE PLATE	1

SYMBOLS	DO NOT SCALE	DESCRIPTION	QTY.
FLATNESS			
ANGULARITY			
PARALLELISM			
PERPENDICULARITY			
CIRCULAR RUN OUT			
ROUNDNESS			
TOTAL RUN OUT			
CYLINDRICITY			
FINISH			
UNLESS OTHERWISE SPECIFIED -			
REMOVE SHARP CORNERS .010 TO .020			
BREAK ALL SHARP CORNERS .010 TO .020			
STAMP OR MARK DRAWING NO.			

TITLE	DRAWN BY	DATE	DRAWING NO.
KUBOTA -05 HEX~FLX ASS'Y	SLIETING	10-30-07	006-0-HB3-87-A2
MANUFACTURING INC. ®	CHECKED BY	SCALE	SHEET OF REV.