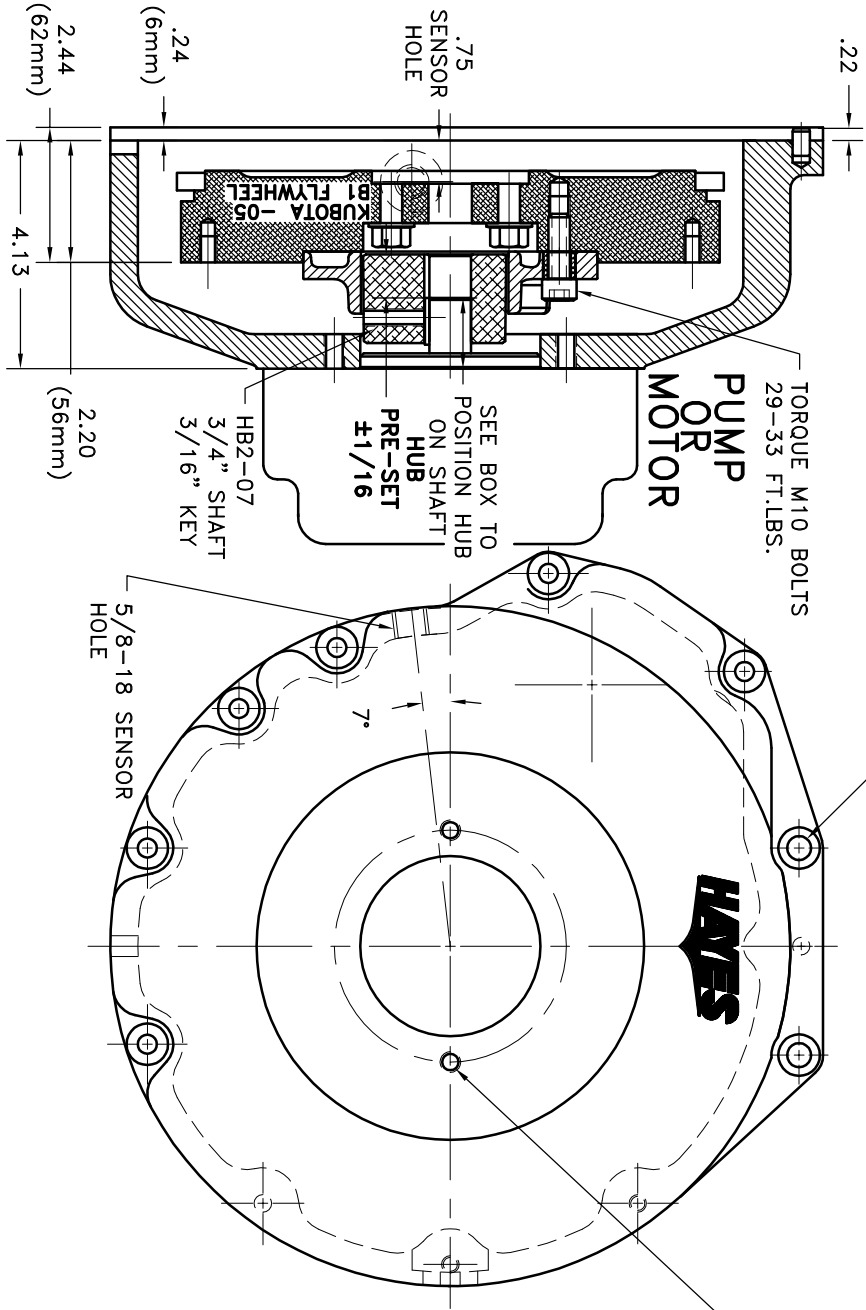


REV	DATE	CHANGE DESCRIPTION	MOD BY	CK1	CK2

TORQUE M10 BOLTS  
29-33 FT.LBS.

S.A.E. A 2-BOLT MOUNT  
3.25" PILOT  
(2) 3/8-16 TAPPED HOLES  
EQ. SPACED ON A 4.19 B.C.



NOTES:

1. HOUSING FOR KUBOTA ENGINES D-905, D1005-B, D1105-B, V1205-B, V1305-P, AND V1505-B.

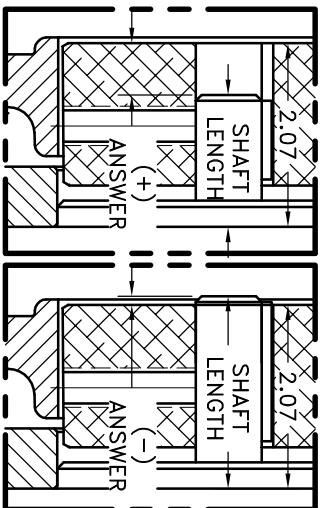
**IMPORTANT INSTALLATION NOTE!!!!**  
THIS PRINT IS FOR LOCATION OF HUB ON PARALLEL SHAFTS ONLY. IMPROPER INSTALLATION OF HUB COULD CAUSE PREMATURE WEAR AND OR FAILURE. USE INFORMATION PROVIDED ON THIS SHEET WITH YOUR SHAFT LENGTH TO OBTAIN HUB LOCATION ON SHAFT. PLEASE CONTACT DISTRIBUTOR OR FACTORY FOR FURTHER INFORMATION ON THIS PROCESS. HUB SET SCREWS MUST BE PROPERLY TORQUED TO 20 FT.LBS. EACH. PLEASE CONTACT DISTRIBUTOR OR FACTORY FOR ANY FURTHER QUESTIONS.

NOTE: THIS STEP IS IMPORTANT TO  
ENSURE FULL SPLINE ENGAGEMENT.

NOTE: REMOVE HUB FROM ASS'Y, PRESET HUB ON SHAFT & REASSEMBLE USING NUT & BOLT GRADE LOC-TITE ON SET SCREWS. TORQUE SET SCREWS TO 20 FT.LBS. SHAFT SHOULD HAVE A MINIMUM OF 3/4" OF ENGAGEMENT IF NOT CONTACT FACTORY FOR RECOMMENDATIONS. TO GET HUB PRESET USE THIS EQUATION:

EXAMPLE:  
2.07 – SHAFT LENGTH = HUB PRESET  
IF YOUR ANSWER IS (+) SHAFT IS INSIDE OF HUB, IF YOUR ANSWER IS (-) SHAFT STICKS OUT OF HUB.  
(SEE BOXES)

THIS DRAWING IS THE PROPERTY OF HAYES MFG. INC. AND IS LOANED TO YOU FOR INFORMATION ONLY. IT IS NOT TO BE REPRODUCED, COPIED, OR USED IN ANY MANNER WITHOUT THE WRITTEN CONSENT OF HAYES MFG. INC. IT SHALL BE USED AS A MEANS OF REFERENCE TO WORK FURNISHED BY THIS COMPANY ONLY, AND IS NOT TO BE SUBMITTED TO OUTSIDE PARTIES FOR EXAMINATION WITHOUT OUR CONSENT.



HEX~FLX COUPLING ASS'Y  
B-S05-HB3-07

10	952182	BOLT KIT	1
9	PURCHASE	5/16 DIA x 1/2 DOWEL PIN	2
8	952055-16	HOUSING	1
2	HB3-07	HEX~FLX HUB	1
1	B-S05	HEX~FLX DRIVE PLATE	1

SYMBOLS	DO NOT SCALE	DET.	PART NUMBER	DESCRIPTION	QTY.
FLATNESS STRAIGHTNESS ANGULARITY PARALLELISM PERPENDICULARITY CIRCULAR RUN OUT TOTAL RUN OUT FINISH	TOLERANCES UNLESS OTHERWISE SPECIFIED FRACTIONAL DECIMAL ANGULAR ROUNDED CIRCULAR RUN OUT TOTAL RUN OUT FINISH	1 2 3 4 5 6 7 8 9 10 11 12 13 14 15 16 17 18 19 20 21 22 23 24 25 26 27 28 29 30 31 32 33 34 35 36 37 38 39 40 41 42 43 44 45 46 47 48 49 50 51 52 53 54 55 56 57 58 59 60 61 62 63 64 65 66 67 68 69 70 71 72 73 74 75 76 77 78 79 80 81 82 83 84 85 86 87 88 89 90 91 92 93 94 95 96 97 98 99 100	1 2 3 4 5 6 7 8 9 10 11 12 13 14 15 16 17 18 19 20 21 22 23 24 25 26 27 28 29 30 31 32 33 34 35 36 37 38 39 40 41 42 43 44 45 46 47 48 49 50 51 52 53 54 55 56 57 58 59 60 61 62 63 64 65 66 67 68 69 70 71 72 73 74 75 76 77 78 79 80 81 82 83 84 85 86 87 88 89 90 91 92 93 94 95 96 97 98 99 100	1 2 3 4 5 6 7 8 9 10 11 12 13 14 15 16 17 18 19 20 21 22 23 24 25 26 27 28 29 30 31 32 33 34 35 36 37 38 39 40 41 42 43 44 45 46 47 48 49 50 51 52 53 54 55 56 57 58 59 60 61 62 63 64 65 66 67 68 69 70 71 72 73 74 75 76 77 78 79 80 81 82 83 84 85 86 87 88 89 90 91 92 93 94 95 96 97 98 99 100	1 2 3 4 5 6 7 8 9 10 11 12 13 14 15 16 17 18 19 20 21 22 23 24 25 26 27 28 29 30 31 32 33 34 35 36 37 38 39 40 41 42 43 44 45 46 47 48 49 50 51 52 53 54 55 56 57 58 59 60 61 62 63 64 65 66 67 68 69 70 71 72 73 74 75 76 77 78 79 80 81 82 83 84 85 86 87 88 89 90 91 92 93 94 95 96 97 98 99 100



DATE	05-08-07	DRAWING NO.	006-S-HB3-07-A2
CHECKED BY	SCALE	SHEET	OF REV.