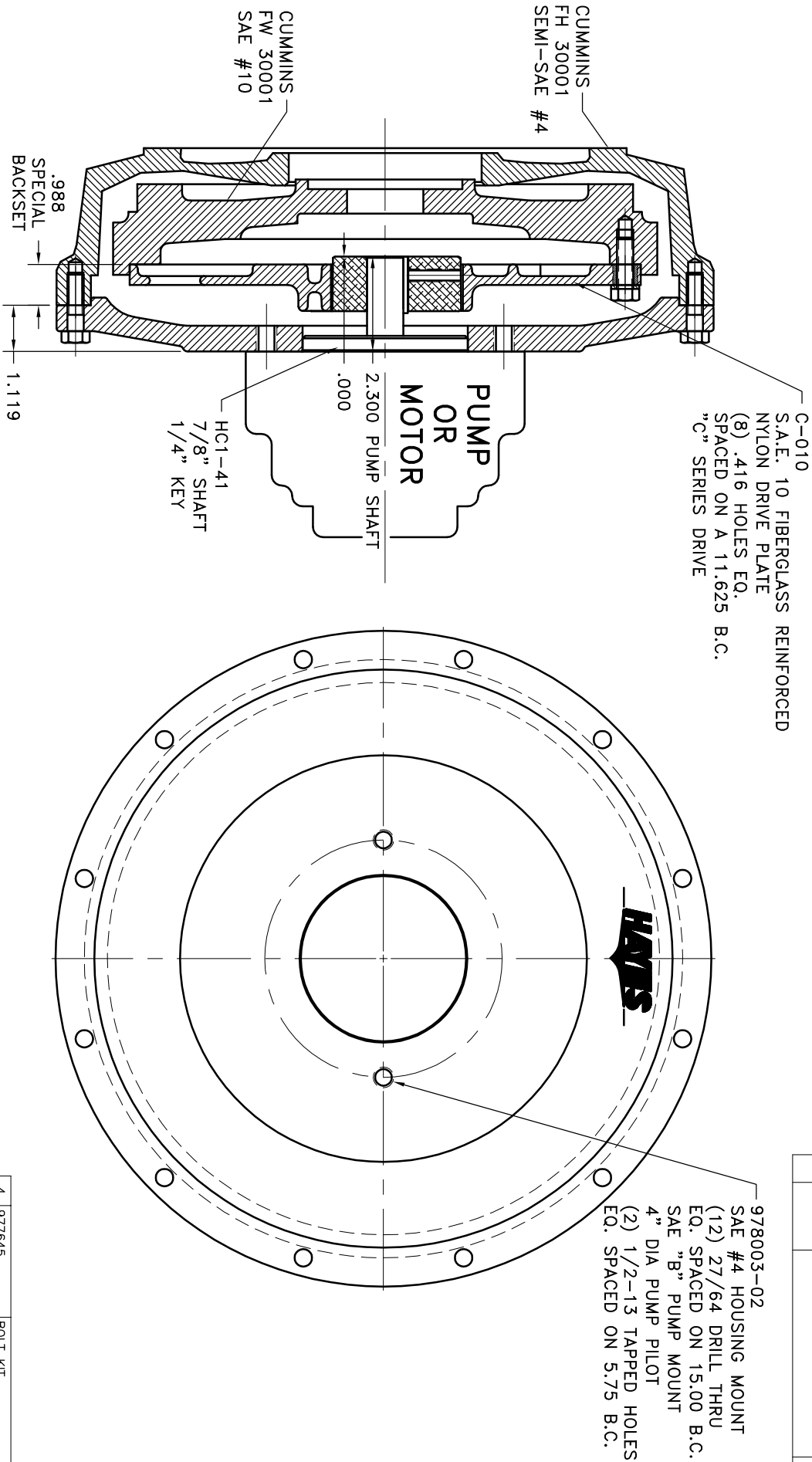


REV	DATE	CHANGE DESCRIPTION	MOD BY	CK1	CK2



IMPORTANT INSTALLATION NOTE!!!!!!
 THIS PRINT IS FOR LOCATION OF HUB ON SPINED SHAFTS ONLY. IMPROPER INSTALLATION OF HUB COULD CAUSE PREMATURE WEAR AND OR FAILURE. IF YOU HAVE A SHAFT LENGTH OTHER THAN THOSE SHOWN HERE PLEASE CONTACT DISTRIBUTOR OR FACTORY FOR FURTHER INFORMATION. HUB SET SCREWS MUST BE PROPERLY TORQUED TO 20 FT.LBS. EACH. PLEASE CONTACT DISTRIBUTOR OR FACTORY FOR ANY FURTHER QUESTIONS.

4	977645	BOLT KIT	1
3	978003-02	SAE 4 HOUSING	1
2	HC1-41	HEX~FLX HUB	1
1	C-010	HEX~FLX DRIVE PLATE	1

SYMBOLS	DO NOT SCALE	DET.	PART NUMBER	DESCRIPTION	QTY.
FLATNESS CIRCULARITY ANGULARITY PARALLELISM PERPENDICULARITY CONCENTRICITY TOTAL RUN OUT CIRCULAR RUN OUT ROUNDNESS TOTAL RUN OUT FINISH	TOLERANCES UNLESS OTHERWISE SPECIFIED FRACTIONAL DECIMAL .000 ±.005 .000 ±.0005	DRAWING ANGLE 1/2"	TITLE CUMMINS 3.3L HEX~FLX ASSY	DRAWN BY DATE 08-14-06 015-0-HC1-41-B2	SHEET OF REV.

THIS DRAWING IS THE PROPERTY OF HAYES MFG. INC. AND IS LOANED TO YOU FOR YOUR INFORMATION ONLY. IT IS NOT TO BE REPRODUCED, COPIED, OR IN ANY MANNER DISPOSED OF WITHOUT THE WRITTEN CONSENT OF HAYES MFG. INC. IT SHALL BE USED AS A MEANS OF REFERENCE TO WORK FURNISHED BY THIS COMPANY ONLY, AND IS NOT TO BE SUBMITTED TO OUTSIDE PARTIES FOR EXAMINATION WITHOUT OUR CONSENT.