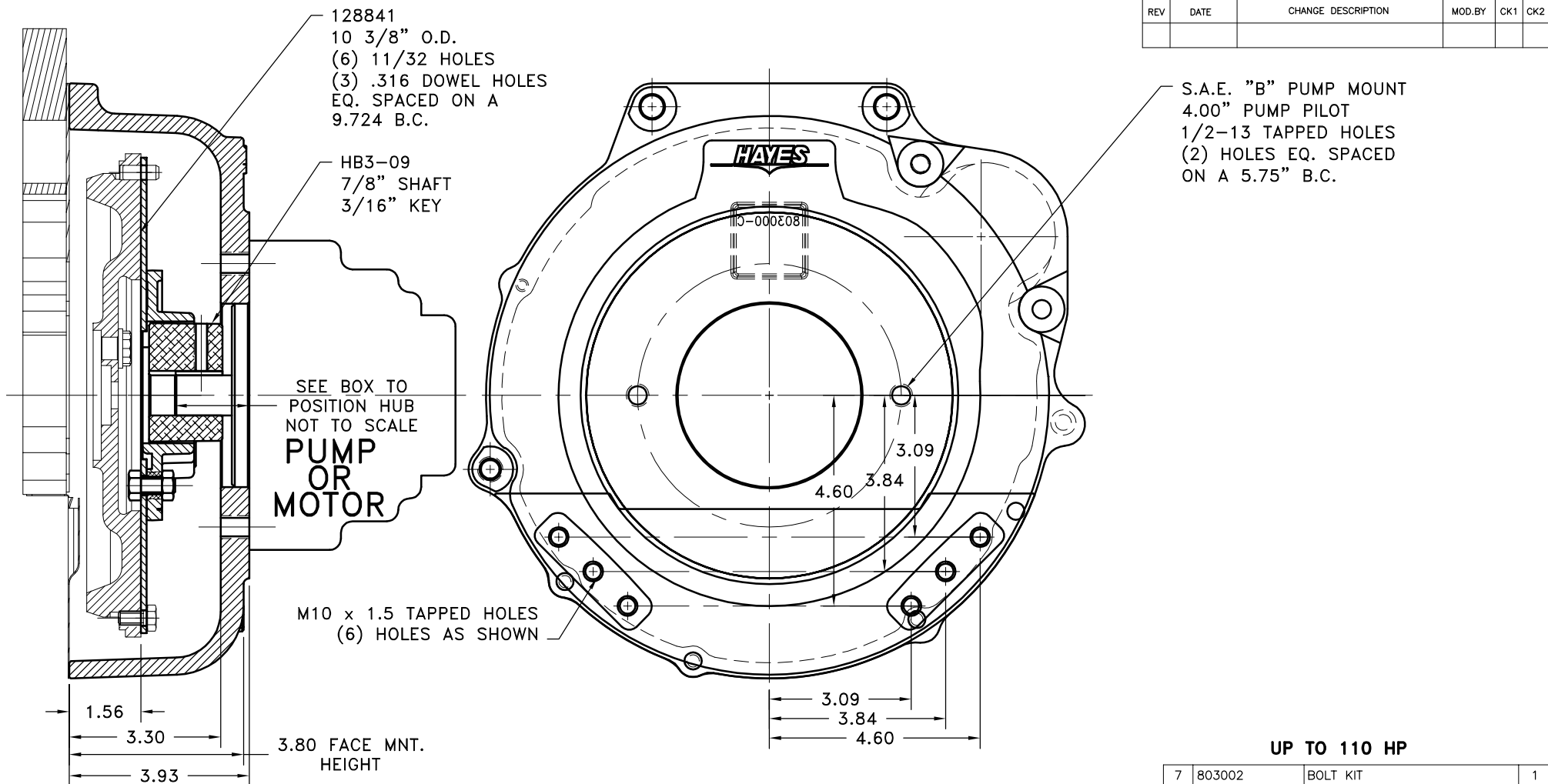


REV	DATE	CHANGE DESCRIPTION	MOD.BY	CK1	CK2



NOTE: REMOVE HUB FROM ASS'Y, PRESET HUB ON SHAFT AS SHOWN. **TORQUE BOTH SET SCREWS TO 25 FT.LBS. USING TORQUE WRENCH.** SHAFT SHOULD HAVE A MINIMUM OF 3/4" OF ENGAGEMENT IF NOT CONTACT FACTORY FOR RECOMMENDATIONS (231) 879-3372 TO GET HUB PRESET USE THIS EQUATION:

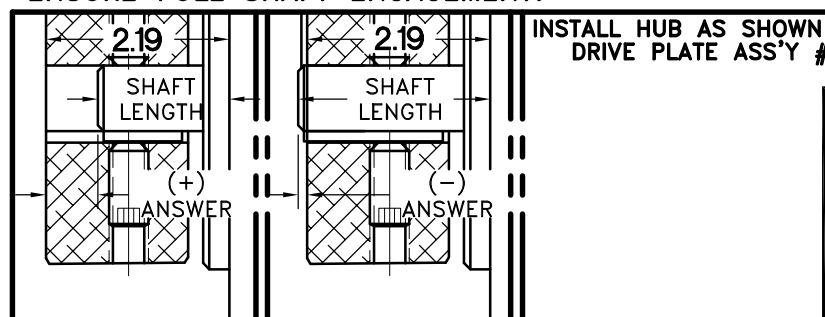
#### PERFORM CALCULATION BELOW:

#### 2.19 - SHAFT LENGTH - HUB PRESET

IF YOUR ANSWER IS (+) SHAFT IS INSIDE OF HUB, IF YOUR ANSWER IS (-) SHAFT STICKS OUT OF HUB. (SEE BOXES)

THIS DRAWING IS THE PROPERTY OF HAYES MFG. INC. AND IS LOANED SUBJECT TO THE CONDITION THAT IT SHALL NOT BE REPRODUCED, COPIED, LOANED OR OTHERWISE DISPOSED OF, DIRECTLY OR INDIRECTLY. IT SHALL BE USED AS A MEANS OF REFERENCE TO WORK FURNISHED BY THIS COMPANY ONLY AND IS NOT TO BE SUBMITTED TO OUTSIDE PARTIES FOR EXAMINATION WITHOUT OUR CONSENT.

NOTE: THIS STEP IS IMPORTANT TO ENSURE FULL SHAFT ENGAGEMENT.



SYMBOLS	DET.	PART NUMBER	DESCRIPTION	QTY.
<ul style="list-style-type: none"> <li>FLATNESS</li> <li>STRAIGHTNESS</li> <li>ANGULARITY</li> <li>PERPENDICULARITY</li> <li>PARALLELISM</li> <li>CONCENTRICITY</li> <li>TRUE POSITION</li> <li>ROUNDNESS</li> <li>CIRCULAR RUN OUT</li> <li>TOTAL RUN OUT</li> <li>CYLINDRICITY</li> <li>FINISH</li> </ul>	DO NOT SCALE DRAWING			
	TOLERANCES UNLESS OTHERWISE SPECIFIED			
	125 MAXIMUM			
	ANGLE $\pm 1/2^\circ$			
	FRACTION $\pm 1/32$			
	DECIMAL			
	.00 $\pm .01$			
	.000 $\pm .005$			
	.0000 $\pm .0005$			
	UNLESS OTHERWISE SPECIFIED - REMOVE FIRST THREAD ON ALL TAPPED HOLES			
	BREAK ALL SHARP CORNERS .010 TO .020 STAMP OR MARK DRAWING NO.			
	DRAWN BY	DATE	DRAWING NO.	
	SIETING	01-07-08	025-0-HB3-09-B2	
	CHECKED BY	SCALE		
	RJH			
			SHEET OF REV.	

UP TO 110 HP

7	803002	BOLT KIT	1
6	803000-03	HOUSING	1
5	HB3-09	HEX~FLX HUB	1
4	PURCHASE	3/8-16 x 1/4" THICK HEX NUT	5
3	PURCHASE	3/8-16 x 3/4" HHB	5
2	B-ISU	COUPLING HUB	1
1	128840	FLYWHEEL PLATE	1

**HAYES**

MANUFACTURING INC. ®

TITLE HYUNDAI 1.6L HEX~FLX COUPLING AND HOUSING

MATERIAL