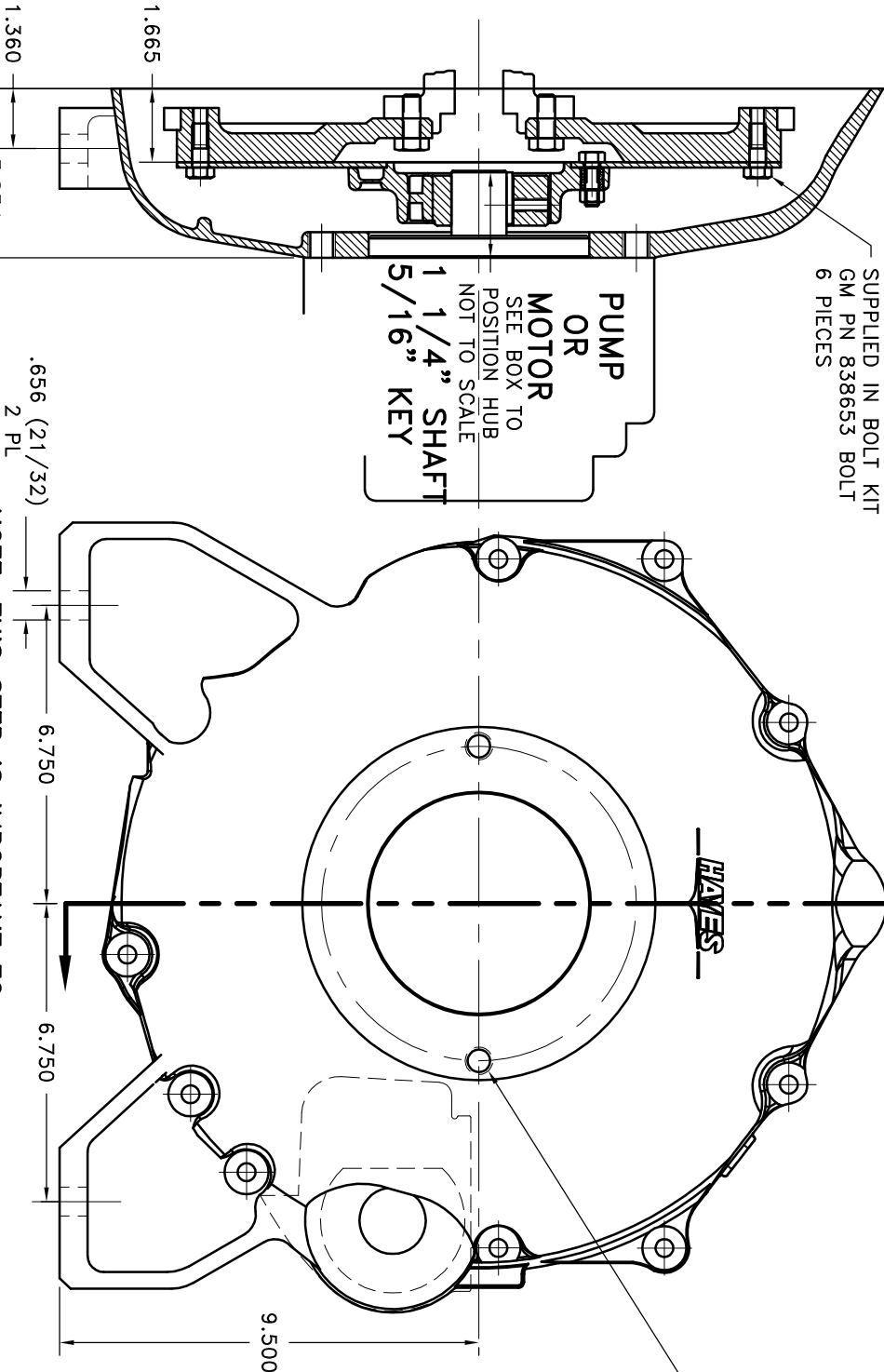


REV	DATE	CHANGE DESCRIPTION	MOD BY	CK1	CK2

SUPPLIED IN BOLT KIT
GM PN 838653 BOLT
6 PIECES

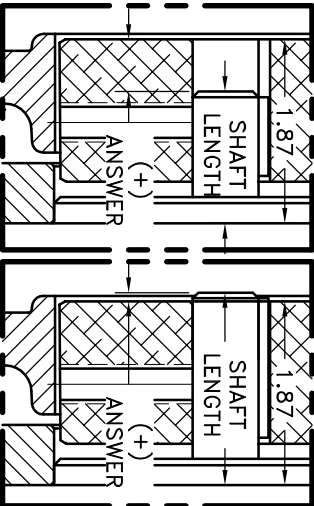
PUMP
OR
MOTOR
SEE BOX TO
POSITION HUB
NOT TO SCALE
1 1/4" SHAFT
5/16" KEY



SAE "C" PUMP MOUNT
5.00 PUMP PILOT
2-BOLT HORIZ.
(2) 5/8-11 TAPPED HOLES
EQ. SPACED ON 7.13 B.C.

GM 5.7 LITRE

NOTE: THIS STEP IS IMPORTANT TO
ENSURE FULL SPLINE ENGAGEMENT.



FLYWHEEL PLATE
ASS'Y #128453

8	890010	4.3 LITRE DUST COVER	1
7	890013	BOLT KIT	1
6	890000-06	HOUSING	1
5	HB1-43	HEX~FLX HUB	1
4	PURCHASE	5/16-18 NUT	5
3	PURCHASE	5/16-18 x 1" HHB	5
2	B-SMN	HEX~FLX PLATE	1
1	128452	FLYWHEEL PLATE	1

SYMBOLS	DET.	PART NUMBER	DESCRIPTION	QTY.
FLATNESS	DO NOT SCALE			
STRAIGHTNESS				
ANGULARITY				
PARALLELISM				
PERPENDICULARITY				
CONCENTRICITY				
ROUNDNESS				
CIRCULAR RUN OUT				
TOTAL RUN OUT				
CYLINDRICITY				
FINISH				
UNLESS OTHERWISE SPECIFIED -				
REMOVE FIRST THREE				
BREAK ALL SHARP CORNERS .010 TO .020				
STAMP OR MARK DRAWING NO.				
DRAWN BY	DATE	DRAWING NO.		
CHECKED BY	SCALE	029-0-HB1-43-C2		
REV.	SHEET	OF		

NOTE: REMOVE HUB FROM ASS'Y, PRESET HUB ON SHAFT
& REASSEMBLE USING NUT & BOLT GRADE LOC-TITE ON
SET SCREWS. SHAFT SHOULD HAVE A MINIMUM OF 3/4"
OF ENGAGEMENT IF NOT CONTACT FACTORY FOR
RECOMMENDATIONS. TO GET HUB PRESET USE THIS
EQUATION:
EXAMPLE:
1.87 - SHAFT LENGTH = HUB PRESET
IF YOUR ANSWER IS (+) SHAFT IS INSIDE OF HUB, IF
YOUR ANSWER IS (-) SHAFT STICKS OUT OF HUB.
(SEE BOXES)

THIS DRAWING IS THE PROPERTY OF HAYES MFG. INC. AND IS LOANED
TO YOU FOR THE CONDITION THAT IT NOT BE REPRODUCED, COPIED,
IT SHALL BE USED AS A MEANS OF REFERENCE TO WORK FURNISHED BY
THIS COMPANY ONLY, AND IS NOT TO BE SUBMITTED TO OUTSIDE PARTIES
FOR EXAMINATION WITHOUT OUR CONSENT.