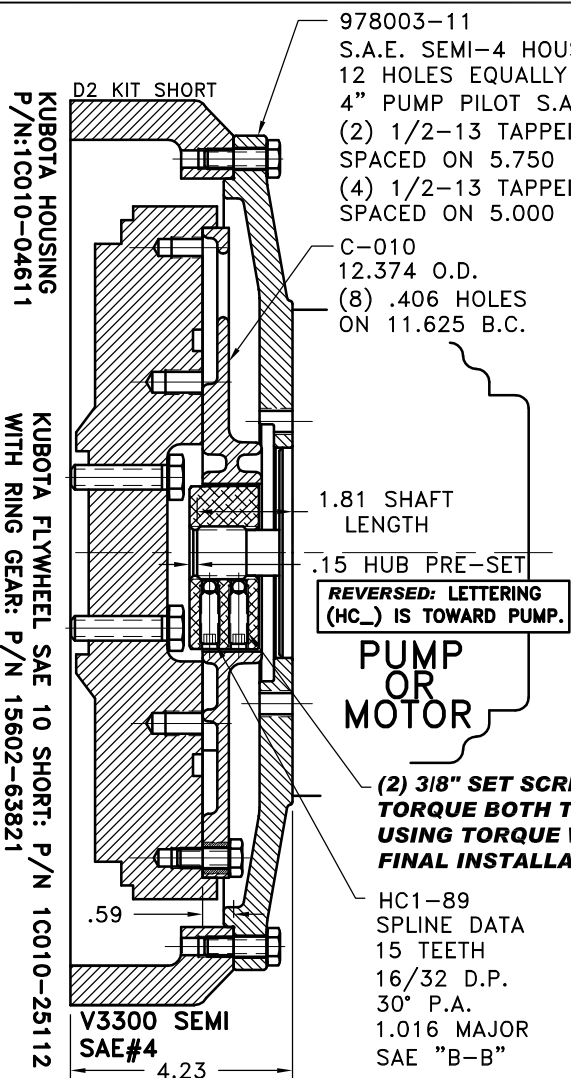


REV	DATE	CHANGE DESCRIPTION	MOD.BY	CK1	CK2



978003-11
 S.A.E. SEMI-4 HOUSING MOUNT 27/64 DRILL THRU
 12 HOLES EQUALLY SPACED ON 15.00 B.C.
 4" PUMP PILOT S.A.E. "B" PUMP MOUNT.
 (2) 1/2-13 TAPPED HOLES EQUALLY
 SPACED ON 5.750 B.C. (VERT & HORZ)
 (4) 1/2-13 TAPPED HOLES EQUALLY
 SPACED ON 5.000 B.C.

C-010
 12.374 O.D.
 (8) .406 HOLES
 ON 11.625 B.C.

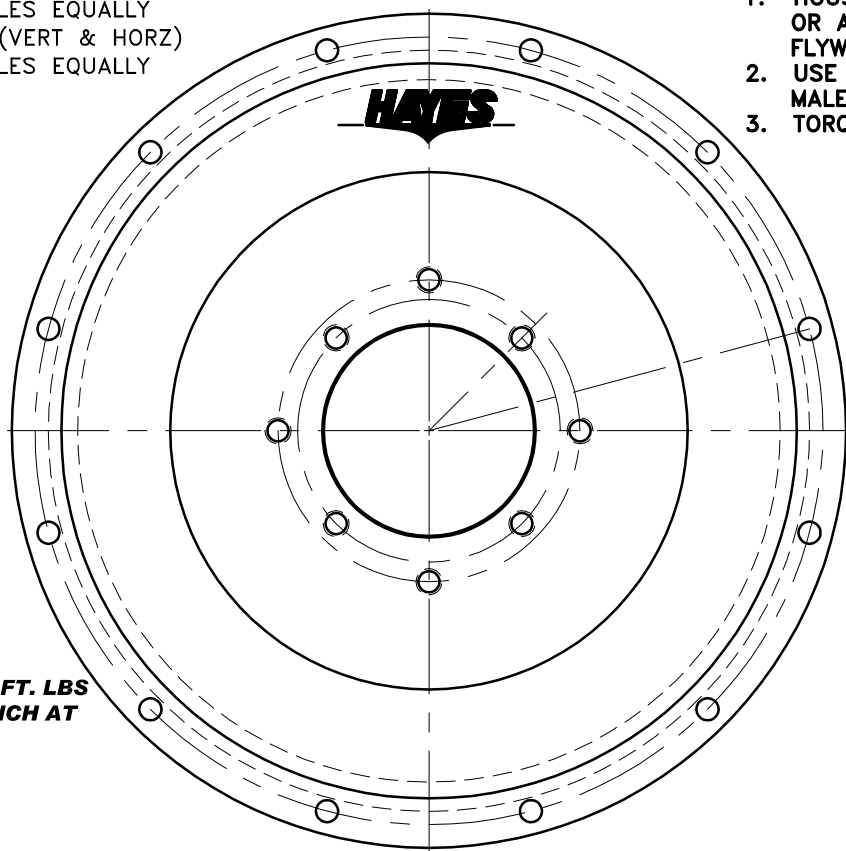
1.81 SHAFT
 LENGTH

.15 HUB PRE-SET
**REVERSED: LETTERING
 (HC_) IS TOWARD PUMP.**

**PUMP
 OR
 MOTOR**

**(2) 3/8" SET SCREWS
 TORQUE BOTH TO 20 FT. LBS
 USING TORQUE WRENCH AT
 FINAL INSTALLATION**

HC1-89
 SPLINE DATA
 15 TEETH
 16/32 D.P.
 30° P.A.
 1.016 MAJOR
 SAE "B-B"



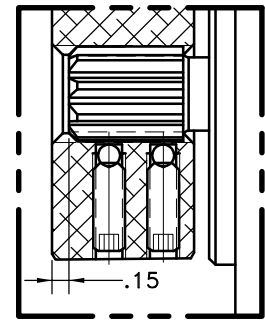
NOTES:

1. HOUSING WILL FIT THE KUBOTA V3300-TE-2 OR ANY KUBOTA USING THE FLYWHEEL AND FLYWHEEL HOUSING LISTED ON THIS DRAWING.
2. USE FURNISHED COUPLING GREASE ON BOTH MALE AND FEMALE SPLINE.
3. TORQUE ALL M10 BOLTS 29-33 FT.LBS.

NOTE: THIS STEP IS IMPORTANT TO ENSURE FULL SPLINE ENGAGEMENT.

- 1) PRESET HUB ON SHAFT AS SHOWN.
- 2) IF YOUR PUMP SHAFT VARIES FROM THE DRAWN SHAFT LENGTH, CONTACT FACTORY FOR RECOMMENDATIONS.
- 3) **TORQUE BOTH SET SCREWS TO 20 FT.LBS. USING TORQUE WRENCH.**
- 4) SHAFT SHOULD HAVE FULL SPLINE ENGAGEMENT INTO HUB, IF NOT CONTACT FACTORY FOR RECOMMENDATIONS (231) 879-3372.

THIS DRAWING IS THE PROPERTY OF HAYES MFG. INC. AND IS LOANED SUBJECT TO THE CONDITION THAT IT SHALL NOT BE REPRODUCED, COPIED, LOANED OR OTHERWISE DISPOSED OF, DIRECTLY OR INDIRECTLY. IT SHALL BE USED AS A MEANS OF REFERENCE TO WORK FURNISHED BY THIS COMPANY ONLY AND IS NOT TO BE SUBMITTED TO OUTSIDE PARTIES FOR EXAMINATION WITHOUT OUR CONSENT.



IMPORTANT INSTALLATION

NOTE!!!!

IMPROPER INSTALLATION OF HUB COULD CAUSE PREMATURE WEAR AND OR FAILURE.

IF YOU HAVE QUESTIONS CONCERNING LOCATION OF METAL HUB ON PUMP SHAFT PLEASE CONTACT DISTRIBUTOR OR FACTORY FOR FURTHER INFORMATION.

BOTH HUB SET SCREWS MUST BE PROPERLY TORQUED TO 20 FT.LBS. USING TORQUE WRENCH . PLEASE CONTACT DISTRIBUTOR OR FACTORY FOR ANY FURTHER QUESTIONS.

DET.	PART NUMBER	DESCRIPTION	QTY.
12	978003-11	SEMI SAE#4 HOUSING	1
11	978051	BOLT KIT	1
2	HC1-89	HEX~FLX HUB	1
1	C-010	HEX~FLX DRIVE PLATE	1

SYMBOLS	DET.	PART NUMBER	DESCRIPTION	QTY.
▭ FLATNESS ▭ STRAIGHTNESS ▭ ANGULARITY ⊥ PERPENDICULARITY ∥ PARALLELISM ⊙ CONCENTRICITY ⊕ TRUE POSITION ○ ROUNDNESS ○ CIRCULAR RUN OUT ○ TOTAL RUN OUT Ⓜ CYLINDRICITY Ⓜ FINISH	DO NOT SCALE DRAWING TOLERANCES UNLESS OTHERWISE SPECIFIED .125 MAXIMUM ANGLE ±1/2° FRACTION ±1/32 DECIMAL .00 ±.01 .000 ±.005 .0000 ±.0005	 TITLE KUBOTA V3300 HEX~FLX ASS'Y MATERIAL		
- UNLESS OTHERWISE SPECIFIED - REMOVE FIRST THREAD ON ALL TAPPED HOLES BREAK ALL SHARP CORNERS .010 TO .020 STAMP OR MARK DRAWING NO.		DRAWN BY SIETING	DATE 10-29-07	DRAWING NO. 033-0-HC1-89-B224
		CHECKED BY RJH	SCALE	SHEET OF REV. HC1 2