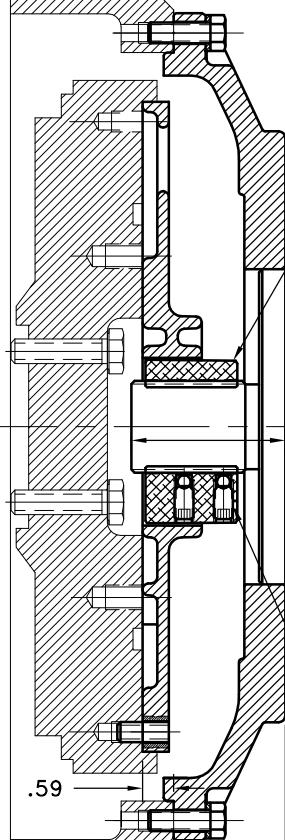


REV	DATE	CHANGE DESCRIPTION	MOD.BY	CK1	CK2

KUBOTA HOUSING
P/N:1C010-04611

KUBOTA FLYWHEEL SAE 10 SHORT: P/N 1C010-25112
WITH RING GEAR: P/N 15602-63821

D2 KIT SHORT



HC3-90
SPLINE DATA
13 TEETH
8/16 D.P.
30° P.A.
1.795 MAJOR
SAE "D-E"

2.93 SHAFT LENGTH

(2) 3/8" SET SCREWS
TORQUE BOTH TO 25 FT. LBS
USING TORQUE WRENCH AT
FINAL INSTALLATION

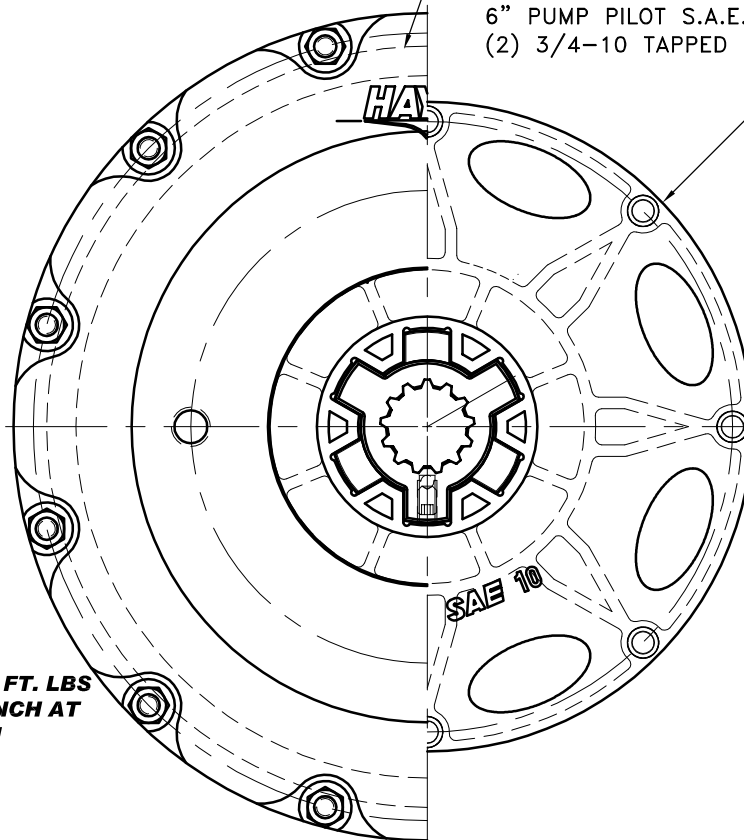
.59

V3300 SEMI
SAE#4

5.23

977553-08

S.A.E. SEMI-4 HOUSING MOUNT 27/64 DRILL THRU
12 HOLES EQUALLY SPACED ON 15.00 B.C.
6" PUMP PILOT S.A.E. "D" PUMP MOUNT.
(2) 3/4-10 TAPPED HOLES ON A 9.00 B.C.



C-010
12.374 O.D.
(8) .406 HOLES
ON 11.625 B.C.

IMPORTANT INSTALLATION

NOTE!!!!

IMPROPER INSTALLATION OF HUB COULD CAUSE
PREMATURE WEAR AND OR FAILURE.

IF YOU HAVE QUESTIONS CONCERNING LOCATION
OF METAL HUB ON PUMP SHAFT PLEASE CONTACT
DISTRIBUTOR OR FACTORY FOR FURTHER
INFORMATION.

**BOTH HUB SET SCREWS MUST BE PROPERLY
TORQUED TO 25 FT.LBS. USING TORQUE WRENCH .
PLEASE CONTACT DISTRIBUTOR OR FACTORY FOR
ANY FURTHER QUESTIONS.**

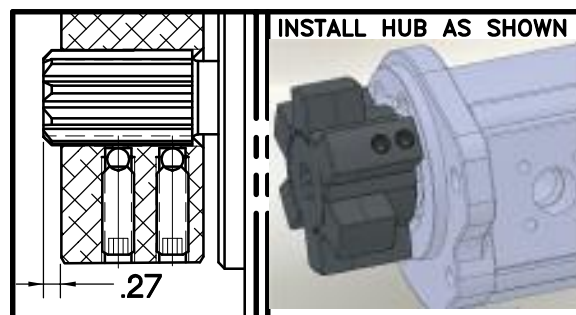
NOTES:

1. HOUSING WILL FIT THE KUBOTA V3300-TE-2
OR ANY KUBOTA USING THE FLYWHEEL AND
FLYWHEEL HOUSING LISTED ON THIS DRAWING.
2. USE FURNISHED COUPLING GREASE ON BOTH
MALE AND FEMALE SPLINE.
3. TORQUE ALL M10 BOLTS 29-33 FT.LBS.

NOTE: THIS STEP IS IMPORTANT TO ENSURE FULL SPLINE ENGAGEMENT.

- 1) PRESET HUB ON SHAFT AS SHOWN.
- 2) IF YOUR PUMP SHAFT VARIES FROM THE DRAWN
SHAFT LENGTH, CONTACT FACTORY FOR
RECOMMENDATIONS.
- 3) **TORQUE BOTH SET SCREWS TO 25 FT.LBS. USING
TORQUE WRENCH.**
- 4) SHAFT SHOULD HAVE FULL SPLINE ENGAGEMENT INTO
HUB, IF NOT CONTACT FACTORY FOR
RECOMMENDATIONS (231) 879-3372.

THIS DRAWING IS THE PROPERTY OF HAYES MFG. INC. AND IS LOANED
SUBJECT TO THE CONDITION THAT IT SHALL NOT BE REPRODUCED,
COPIED, LOANED OR OTHERWISE DISPOSED OF, DIRECTLY OR INDIRECTLY.
IT SHALL BE USED AS A MEANS OF REFERENCE TO WORK FURNISHED BY
THIS COMPANY ONLY AND IS NOT TO BE SUBMITTED TO OUTSIDE PARTIES
FOR EXAMINATION WITHOUT OUR CONSENT.



SET HUB AS SHOWN

INSTALL HUB AS SHOWN

4	977553-08	SEMI SAE#4 HOUSING	1
3	977645	BOLT KIT	1
2	HC3-90	HEX~FLX HUB	1
1	C-010	HEX~FLX DRIVE PLATE	1

SYMBOLS	DET.	PART NUMBER	DESCRIPTION	QTY.
FLATNESS STRAIGHTNESS ANGULARITY PERPENDICULARITY PARALLELISM CONCENTRICITY TRUE POSITION ROUNDNESS CIRCULAR RUN OUT TOTAL RUN OUT CYLINDRICITY FINISH	DO NOT SCALE DRAWING TOLERANCES UNLESS OTHERWISE SPECIFIED .125 MAXIMUM ANGLE ±1/2° FRACTION ±1/32 DECIMAL .00 ±.01 .000 ±.005 .0000 ±.0005			
HAYES MANUFACTURING INC. ®				
TITLE KUBOTA V3300 HEX~FLX ASS'Y				
MATERIAL				
- UNLESS OTHERWISE SPECIFIED - REMOVE FIRST THREAD ON ALL TAPPED HOLES BREAK ALL SHARP CORNERS .010 TO .020 STAMP OR MARK DRAWING NO.		DRAWN BY SIETING	DATE 03-23-2010	DRAWING NO. 033-0-HC3-90-D2
		CHECKED BY RJH	SCALE	SHEET OF REV.