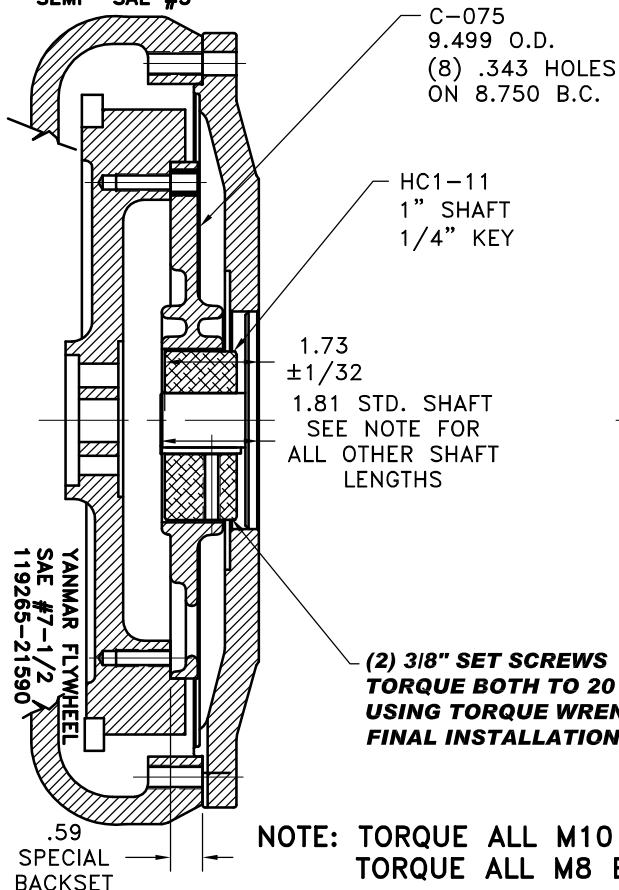


REV	DATE	CHANGE DESCRIPTION	MOD.BY	CK1	CK2

YANMAR HOUSING 171301-01600 SEMI- SAE #5



**(2) 3/8" SET SCREWS
TORQUE BOTH TO 20 FT. LBS
USING TORQUE WRENCH AT
FINAL INSTALLATION**

**NOTE: TORQUE ALL M10 BOLTS 29-33 FT.LBS.
TORQUE ALL M8 BOLTS 20-25 FT.LBS.**

YANMAR ENGINES 3TNE68VH & 3TNE74VM

**NOTE: REMOVE HUB FROM ASS'Y, PRESET HUB ON SHAFT
AS SHOWN. TORQUE BOTH SET SCREWS TO 25 FT.LBS.
USING TORQUE WRENCH. SHAFT SHOULD HAVE A
MINIMUM OF 3/4" OF ENGAGEMENT IF NOT CONTACT
FACTORY FOR RECOMMENDATIONS (231) 879-3372 TO
GET HUB PRESET USE THIS EQUATION:**

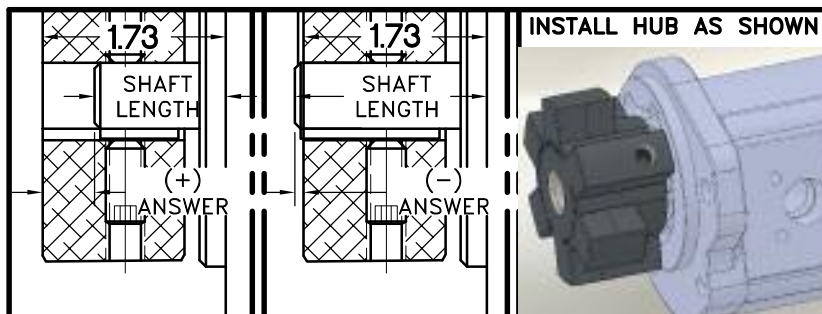
PERFORM CALCULATION BELOW:

1.73 - SHAFT LENGTH - HUB PRESET

**IF YOUR ANSWER IS (+) SHAFT IS INSIDE OF HUB, IF
YOUR ANSWER IS (-) SHAFT STICKS OUT OF HUB.
(SEE BOXES)**

THIS DRAWING IS THE PROPERTY OF HAYES MFG. INC. AND IS LOANED
SUBJECT TO THE CONDITION THAT IT SHALL NOT BE REPRODUCED,
COPIED, LOANED OR OTHERWISE DISPOSED OF, DIRECTLY OR INDIRECTLY.
IT SHALL BE USED AS A MEANS OF REFERENCE TO WORK FURNISHED BY
THIS COMPANY ONLY AND IS NOT TO BE SUBMITTED TO OUTSIDE PARTIES
FOR EXAMINATION WITHOUT OUR CONSENT.

**NOTE: THIS STEP IS IMPORTANT TO
ENSURE FULL SHAFT ENGAGEMENT.**



941905-02
SAE 5 HOUSING MOUNT, 12.38 PILOT
(12) 27/64 HOLES ON A 13.13 B.C.
SAE "B" 2-BOLT MOUNT
4.00 DIA PUMP PILOT
(2) 1/2-13 TAPPED HOLES
EQ. SPACED ON 5.75 B.C.

IMPORTANT INSTALLATION

NOTE!!!!

**IMPROPER INSTALLATION OF HUB COULD CAUSE
PREMATURE WEAR AND OR FAILURE.**

**IF YOU HAVE QUESTIONS CONCERNING LOCATION
OF METAL HUB ON PUMP SHAFT PLEASE CONTACT
DISTRIBUTOR OR FACTORY FOR FURTHER
INFORMATION.**

**BOTH HUB SET SCREWS MUST BE PROPERLY
TORQUED TO 25 FT.LBS. USING TORQUE WRENCH .
PLEASE CONTACT DISTRIBUTOR OR FACTORY FOR
ANY FURTHER QUESTIONS.**

**NOTE: FITS YANMAR ENGINE
NO.s 3TNE68 VH, 3TNE74 VM,
3TNV88, 4TNV88
SEMI SAE #5 HOUSING**

**C TORQUE RANGE
(65-175 HP)**

3	941905-02	HOUSING	1
2	HC1-11	HEX~FLX HUB	1
1	C-075	HEX~FLX PLATE	1

DET.	PART NUMBER	DESCRIPTION	QTY.
3	941905-02	HOUSING	1
2	HC1-11	HEX~FLX HUB	1
1	C-075	HEX~FLX PLATE	1

SYMBOLS FLATNESS STRAIGHTNESS ANGULARITY PERPENDICULARITY PARALLELISM CONCENTRICITY TRUE POSITION ROUNDNESS CIRCULAR RUN OUT TOTAL RUN OUT CIRCULARITY FINISH	DO NOT SCALE DRAWING TOLERANCES UNLESS OTHERWISE SPECIFIED 125 MAXIMUM ANGLE ±1/2° FRACTION ±1/32 DECIMAL .00 ±.01 .000 ±.005 .0000 ±.0005	HAYES MANUFACTURING INC. ® TITLE YANMAR 3TNE HOUSING & FLYWHEEL COUPLING ASSY MATERIAL
- UNLESS OTHERWISE SPECIFIED - REMOVE FIRST THREAD ON ALL TAPPED HOLES BREAK ALL SHARP CORNERS .010 TO .020 STAMP OR MARK DRAWING NO.	DRAWN BY SIETING CHECKED BY	DATE 06-17-2009 SCALE 035-0-HC1-11-B2 SHEET OF REV.