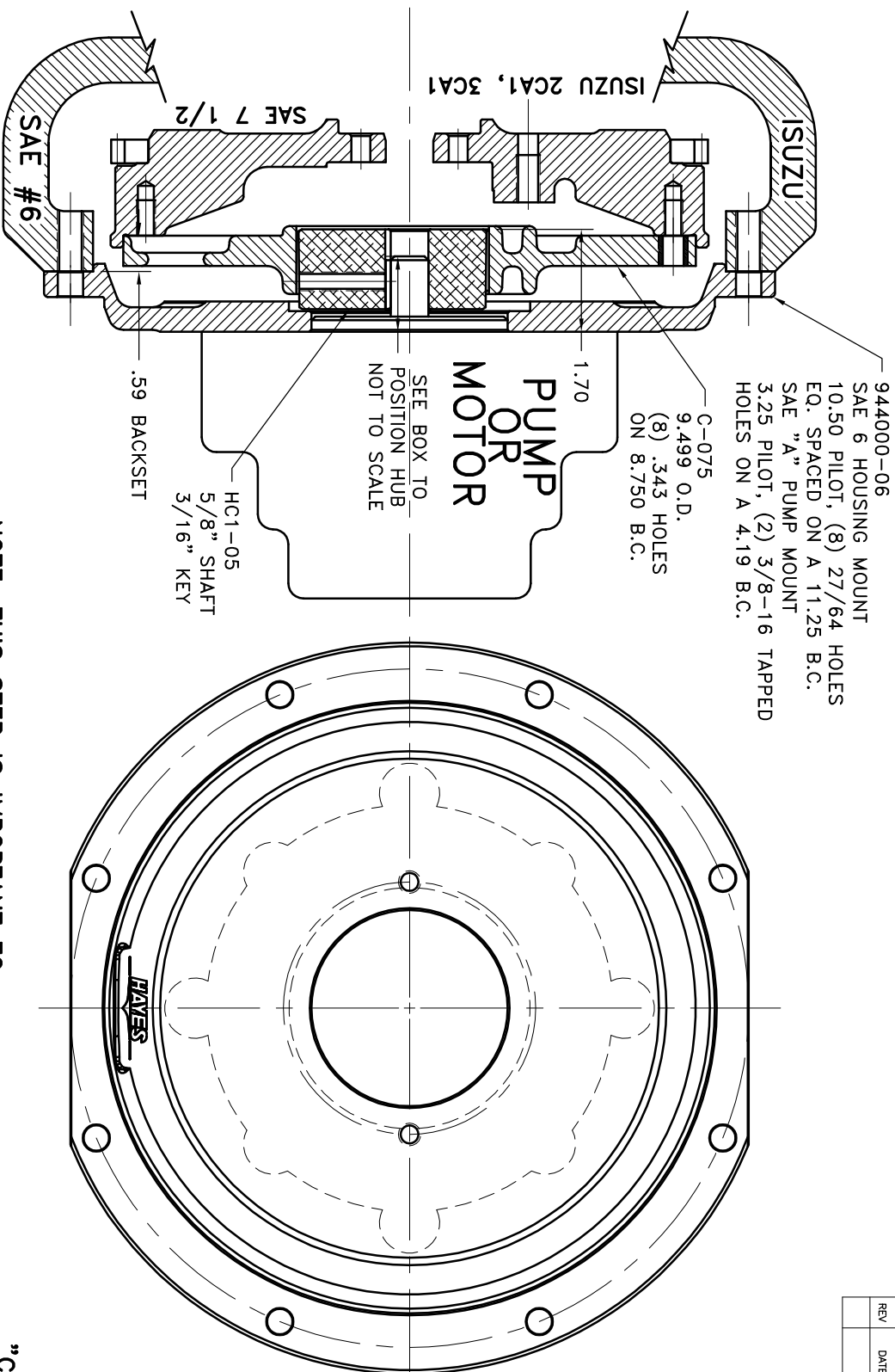


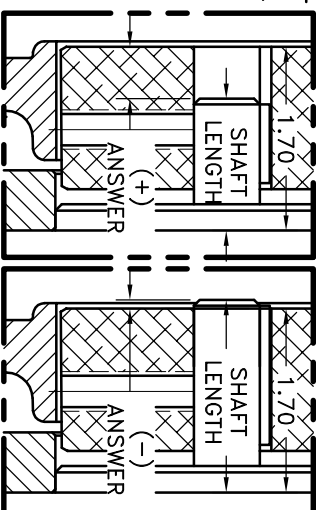
REV	DATE	CHANGE DESCRIPTION	MOD BY	CK1	CK2

# **IMPORTANT INSTALLATION NOTE!!!!**

IMPROPER INSTALLATION OF HUB COULD CAUSE PREMATURE WEAR AND OR FAILURE. IF YOU HAVE QUESTIONS CONCERNING LOCATION OF METAL HUB ON PUMP SHAFT PLEASE CONTACT DISTRIBUTOR OR FACTORY FOR FURTHER INFORMATION. HUB SET SCREWS MUST BE PROPERLY TORQUED TO 20 FT.LBS. EACH. PLEASE CONTACT DISTRIBUTOR OR FACTORY FOR ANY FURTHER QUESTIONS.



NOTE: THIS STEP IS IMPORTANT TO ENSURE FULL SPLINE ENGAGEMENT.



## **"C" SERIES TORQUE RANGE 65-175 HP**

C-075-HC1-05

3	944000-06	SAE 6 HOUSING	1
2	HC1-05	COUPLING HUB	1
1	C-075	HEX-FLX DRIVE PLATE	1

SYMBOLS	DO NOT SCALE	TOLERANCES UNLESS OTHERWISE SPECIFIED	FINISH	DRAWN BY	DATE	DRAWING NO.
FLATNESS	1	ANGLE 1/2"	0.000 ±.0005	SIETING	08-23-07	039-0-HC1-05-A2
PERPENDICULARITY	2	FORM ±.01	0.000 ±.0005	CHECKED BY	SCALE	SHEET
PARALLELISM	3	ROUNDNESS	0.000 ±.0005	REV.		
CONCENTRICITY	4	CIRCULAR RUN OUT	0.000 ±.0005			
POSITION	5	TOTAL RUN OUT	0.000 ±.0005			
TO THE POSITION	6	CYLINDRICITY	0.000 ±.0005			
	7					



NOTE: REMOVE HUB FROM ASSY, PRESET HUB ON SHAFT & REASSEMBLE USING NUT & BOLT GRADE LOC-TITE ON SET SCREWS. TORQUE SET SCREWS TO 20 FT.LBS. SHAFT SHOULD HAVE A MINIMUM OF 3/4" OF ENGAGEMENT IF NOT CONTACT FACTORY FOR RECOMMENDATIONS. TO GET HUB PRESET USE THIS EQUATION:

EXAMPLE:  
1.70 - SHAFT LENGTH = HUB PRESET

IF YOUR ANSWER IS (+) SHAFT IS INSIDE OF HUB, IF YOUR ANSWER IS (-) SHAFT STICKS OUT OF HUB. (SEE BOXES)

THIS DRAWING IS THE PROPERTY OF HAYES MFG. INC. AND IS LOANED TO YOU FOR INFORMATION ONLY. IT IS NOT TO BE REPRODUCED, COPIED, OR USED IN ANY MANNER WITHOUT OUR CONSENT. IT SHALL BE USED AS A MEANS OF REFERENCE TO WORK FURNISHED BY THIS COMPANY ONLY, AND IS NOT TO BE SUBMITTED TO OUTSIDE PARTIES FOR EXAMINATION WITHOUT OUR CONSENT.