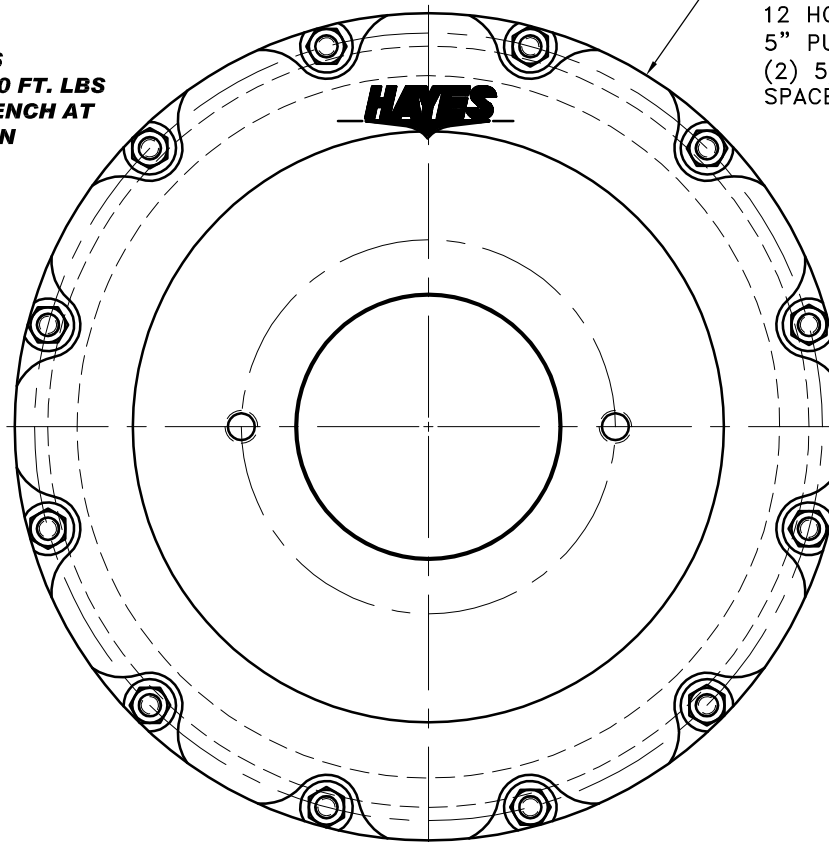
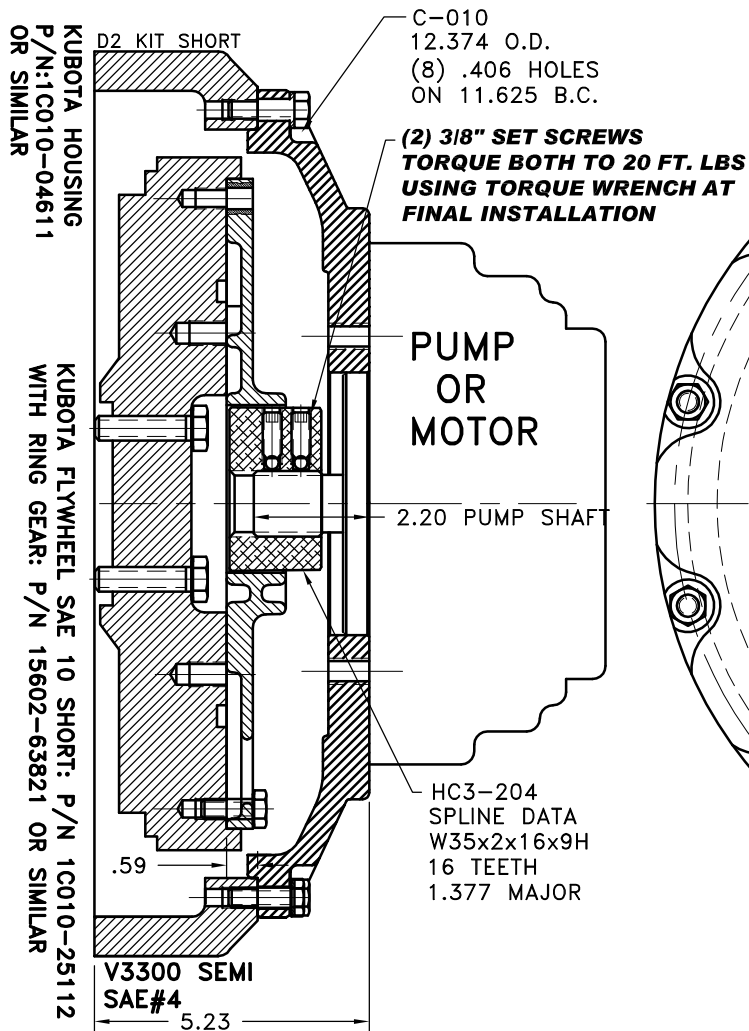


REV	DATE	CHANGE DESCRIPTION	MOD.BY	CK1	CK2



### **IMPORTANT INSTALLATION** **NOTE!!!!**

**IMPROPER INSTALLATION OF HUB COULD CAUSE**  
**PREMATURE WEAR AND OR FAILURE.**

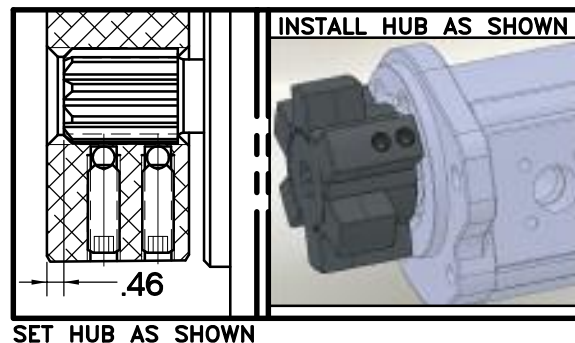
**IF YOU HAVE QUESTIONS CONCERNING LOCATION**  
**OF METAL HUB ON PUMP SHAFT PLEASE CONTACT**  
**DISTRIBUTOR OR FACTORY FOR FURTHER**  
**INFORMATION.**

**BOTH HUB SET SCREWS MUST BE PROPERLY**  
**TORQUED TO 25 FT.LBS. USING TORQUE WRENCH .**  
**PLEASE CONTACT DISTRIBUTOR OR FACTORY FOR**  
**ANY FURTHER QUESTIONS.**

### **NOTE: THIS STEP IS IMPORTANT TO** **ENSURE FULL SPLINE ENGAGEMENT.**

- 1) PRESET HUB ON SHAFT AS SHOWN.
- 2) IF YOUR PUMP SHAFT VARIES FROM THE DRAWN SHAFT LENGTH, CONTACT FACTORY FOR RECOMMENDATIONS.
- 3) **TORQUE BOTH SET SCREWS TO 25 FT.LBS. USING TORQUE WRENCH.**
- 4) SHAFT SHOULD HAVE FULL SPLINE ENGAGEMENT INTO HUB, IF NOT CONTACT FACTORY FOR RECOMMENDATIONS (231) 879-3372.

THIS DRAWING IS THE PROPERTY OF HAYES MFG. INC. AND IS LOANED  
SUBJECT TO THE CONDITION THAT IT SHALL NOT BE REPRODUCED,  
COPIED, LOANED OR OTHERWISE DISPOSED OF, DIRECTLY OR INDIRECTLY.  
IT SHALL BE USED AS A MEANS OF REFERENCE TO WORK FURNISHED BY  
THIS COMPANY ONLY AND IS NOT TO BE SUBMITTED TO OUTSIDE PARTIES  
FOR EXAMINATION WITHOUT OUR CONSENT.



4	977554-03	SEMI SAE#4 HOUSING	1
3	978051	BOLT KIT	1
2	HC3-204	HEX~FLX HUB	1
1	C-010	HEX~FLX DRIVE PLATE	1

SYMBOLS	DET.	PART NUMBER	DESCRIPTION	QTY.
FLATNESS STRAIGHTNESS ANGULARITY PERPENDICULARITY PARALLELISM CONCENTRICITY TRUE POSITION ROUNDNESS CIRCULAR RUN OUT TOTAL RUN OUT CYLINDRICITY FINISH	DO NOT SCALE DRAWING TOLERANCES UNLESS OTHERWISE SPECIFIED .125/ MAXIMUM ANGLE ±1/2° FRACTION ±1/32 DECIMAL .00 ±.01 .000 ±.005 .0000 ±.0005	UNLESS OTHERWISE SPECIFIED - REMOVE FIRST THREAD ON ALL TAPPED HOLES BREAK ALL SHARP CORNERS .010 TO .020 STAMP OR MARK DRAWING NO.	<b>HAYES</b> MANUFACTURING INC. ® TITLE KUBOTA V3300/2600 HEX~FLX ASS'Y MATERIAL	DRAWN BY LAWSON CHECKED BY RJH
			DATE 7-31-09 SCALE	DRAWING NO. 040-0-HC3-204-C2 SHEET OF REV.