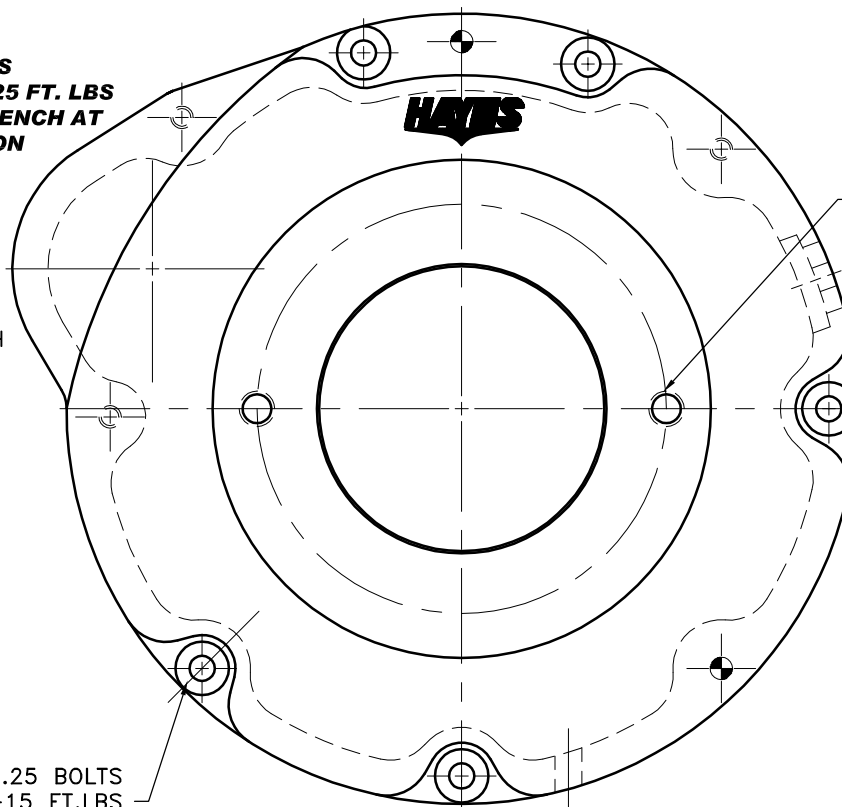
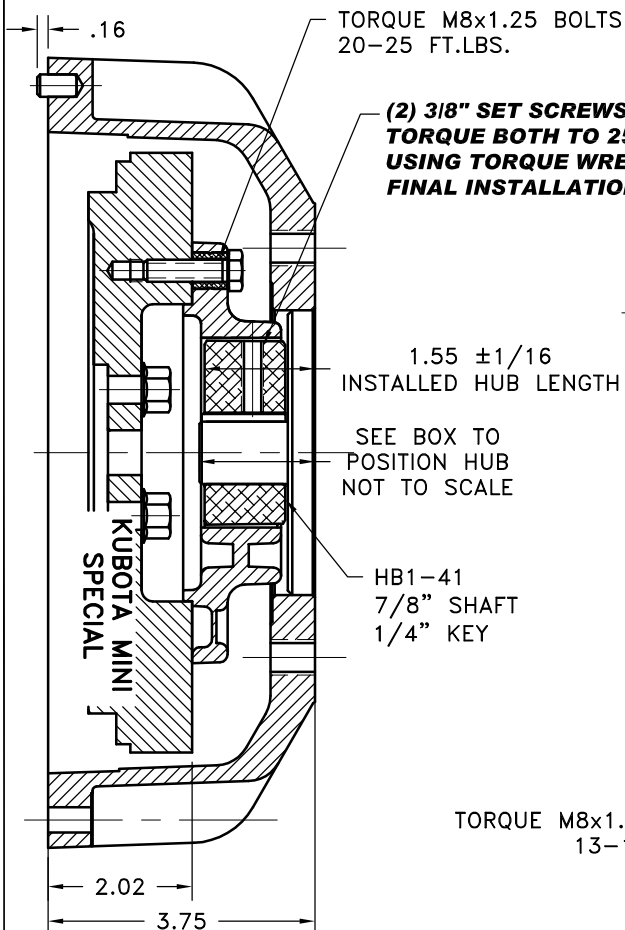


REV	DATE	CHANGE DESCRIPTION	MOD.BY	CK1	CK2



SAE "B" PUMP MOUNT  
4.00 PILOT DIA.,  
(2) 1/2-13 TAPPED HOLES ON A 5.75 B.C.

### IMPORTANT INSTALLATION NOTE!!!!

IMPROPER INSTALLATION OF HUB COULD CAUSE  
PREMATURE WEAR AND OR FAILURE.

IF YOU HAVE QUESTIONS CONCERNING LOCATION  
OF METAL HUB ON PUMP SHAFT PLEASE CONTACT  
DISTRIBUTOR OR FACTORY FOR FURTHER  
INFORMATION.

**BOTH HUB SET SCREWS MUST BE PROPERLY  
TORQUED TO 25 FT.LBS. USING TORQUE WRENCH .**  
PLEASE CONTACT DISTRIBUTOR OR FACTORY FOR  
ANY FURTHER QUESTIONS.

**SPECIAL FOR KUBOTA D902**

NOTE: REMOVE HUB FROM ASS'Y, PRESET HUB ON SHAFT  
AS SHOWN. **TORQUE BOTH SET SCREWS TO 25 FT.LBS.  
USING TORQUE WRENCH.** SHAFT SHOULD HAVE A  
MINIMUM OF 3/4" OF ENGAGEMENT IF NOT CONTACT  
FACTORY FOR RECOMMENDATIONS (231) 879-3372 TO  
GET HUB PRESET USE THIS EQUATION:

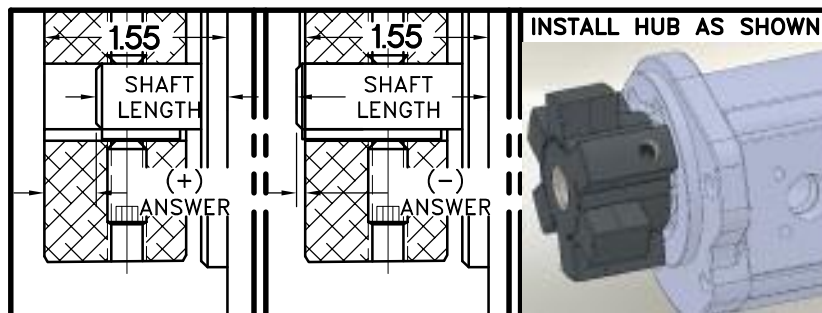
**PERFORM CALCULATION BELOW:**

**1.55 - SHAFT LENGTH = HUB PRESET**

IF YOUR ANSWER IS (+) SHAFT IS INSIDE OF HUB, IF  
YOUR ANSWER IS (-) SHAFT STICKS OUT OF HUB.  
(SEE BOXES)

THIS DRAWING IS THE PROPERTY OF HAYES MFG. INC. AND IS LOANED  
SUBJECT TO THE CONDITION THAT IT SHALL NOT BE REPRODUCED,  
COPIED, LOANED OR OTHERWISE DISPOSED OF, DIRECTLY OR INDIRECTLY.  
IT SHALL BE USED AS A MEANS OF REFERENCE TO WORK FURNISHED BY  
THIS COMPANY ONLY AND IS NOT TO BE SUBMITTED TO OUTSIDE PARTIES  
FOR EXAMINATION WITHOUT OUR CONSENT.

NOTE: THIS STEP IS IMPORTANT TO  
ENSURE FULL SHAFT ENGAGEMENT.



7	BLACK PLUG	C-32-U-200 OR C36-2-U-2000	1
6	930100-02	HOUSING	1
5	930112	BOLT KIT	1
3	PURCHASE	5/16 DIA x 1/2 DOWEL PIN	2
2	HB1-41	HEX~FLX HUB	1
1	B-SMN	HEX~FLX FLYWHEEL PLATE	1

SYMBOLS	DET.	PART NUMBER	DESCRIPTION	QTY.
FLATNESS STRAIGHTNESS ANGULARITY PERPENDICULARITY PARALLELISM CONCENTRICITY TRUE POSITION ROUNDNESS CIRCULAR RUN OUT TOTAL RUN OUT CYLINDRICITY FINISH	DO NOT SCALE DRAWING TOLERANCES UNLESS OTHERWISE SPECIFIED .125 MAXIMUM ANGLE ±1/2° FRACTION ±1/32 DECIMAL .00 ±.01 .000 ±.005 .0000 ±.0005	UNLESS OTHERWISE SPECIFIED - REMOVE FIRST THREAD ON ALL TAPPED HOLES BREAK ALL SHARP CORNERS .010 TO .020 STAMP OR MARK DRAWING NO.	<b>HAYES</b> MANUFACTURING INC. ® TITLE KUBOTA MINI HEX~FLX ASS'Y MATERIAL	DRAWN BY SIETING CHECKED BY RJH
			DATE 07-23-08 SCALE	DRAWING NO. 044-0-HB1-41-B2 SHEET OF REV.