

REV	DATE	CHANGE DESCRIPTION	MOD.BY	CK1	CK2
C	05/19/2010	CHANGED TO 1212 WOODRUFF KEY	ZS	RJH	JM

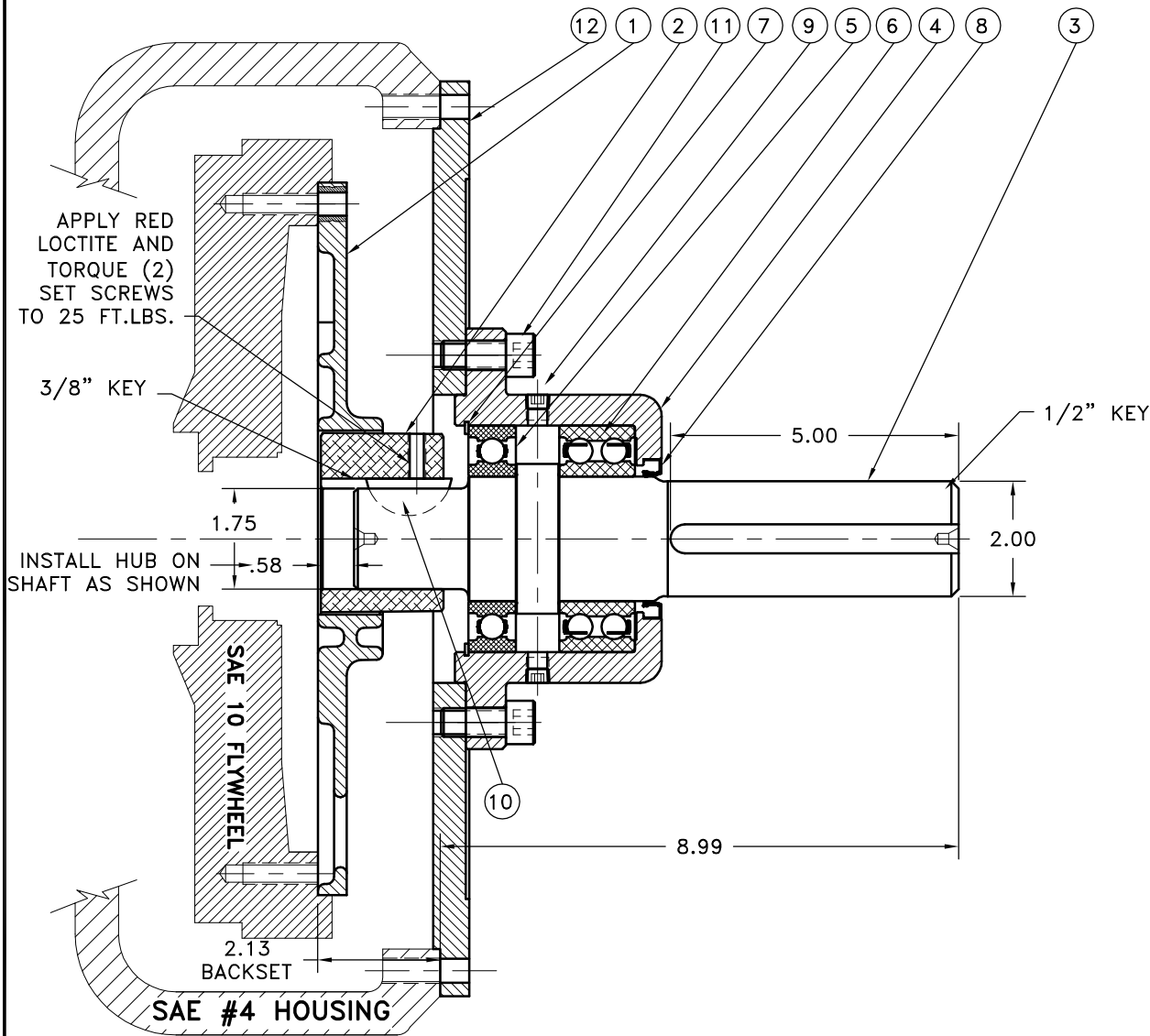
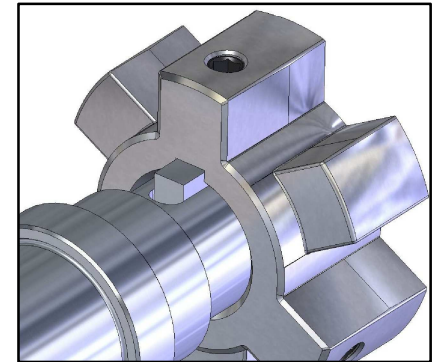
NOTES:

- WARNING!!!** INJURY OR DEATH FROM A ROTATING STUB SHAFT CAN OCCUR IF A CONDITION EXISTS WHICH WOULD CAUSE THE SHAFT TO BREAK OR COME APART FROM ANY PART OF THE ASSEMBLY. DEPENDING UPON THE APPLICATION (FOR EXAMPLE, FAN, PULLEY, SHEAVE, ETC.), THE AREA AROUND THE STUB SHAFT MUST BE SUFFICIENTLY GUARDED SO THAT IN THE EVENT OF FAILURE, THE GUARD WILL CONTAIN ANY AIRBORNE PARTS.

ASSEMBLY NOTE:

MUST USE DOUBLE SEALED BEARINGS.

HUB/SHAFT ORIENTATION



12	126293-01	PUMP MOUNT PLATE	1
11	740000	1/2-13 SHCS	6
10	1212	1212 WOODRUFF KEY	1
9	1/8-27	PIPE PLUG	2
8	CRW1R21610	SEAL	1
7	RR-393	SPIROLOX RETAINING RING	1
6	3211A2ZC3	DOUBLE BEARING	1
5	211KDD	BEARING	1
4	127870	BEARING HOUSING	1
3	200014-01	STUB SHAFT [5"]	1
2	HC4-23	HEX~FLX HUB	1
1	C-010	HEX~FLX DRIVE PLATE	1

200-L

C-010-HC4-23

SYMBOLS	DET.	PART NUMBER	DESCRIPTION	QTY.
FLATNESS STRAIGHTNESS ANGULARITY PERPENDICULARITY PARALLELISM CONCENTRICITY TRUE POSITION ROUNDNESS CIRCULAR RUN OUT TOTAL RUN OUT CYLINDRICITY FINISH	DO NOT SCALE DRAWING TOLERANCES UNLESS OTHERWISE SPECIFIED .125" MAXIMUM ANGLE ±1/2" FRACTION ±1/32 DECIMAL .00 ±.01 .000 ±.005 .0000 ±.0005	MAKE: <input type="checkbox"/> BUY: <input type="checkbox"/>	HAYES MANUFACTURING INC. ® TITLE BEARING SUPPORTED STUB SHAFT ASS'Y MATERIAL	DRAWN BY SIETING DATE 12-06-06 CHECKED BY RJH SCALE DRAWING NO. 200-010-04-L SHEET OF REV.

THIS DRAWING IS THE PROPERTY OF HAYES MFG. INC. AND IS LOANED SUBJECT TO THE CONDITION THAT IT SHALL NOT BE REPRODUCED, COPIED, LOANED OR OTHERWISE DISPOSED OF, DIRECTLY OR INDIRECTLY. IT SHALL BE USED AS A MEANS OF REFERENCE TO WORK FURNISHED BY THIS COMPANY ONLY AND IS NOT TO BE SUBMITTED TO OUTSIDE PARTIES FOR EXAMINATION WITHOUT OUR CONSENT.