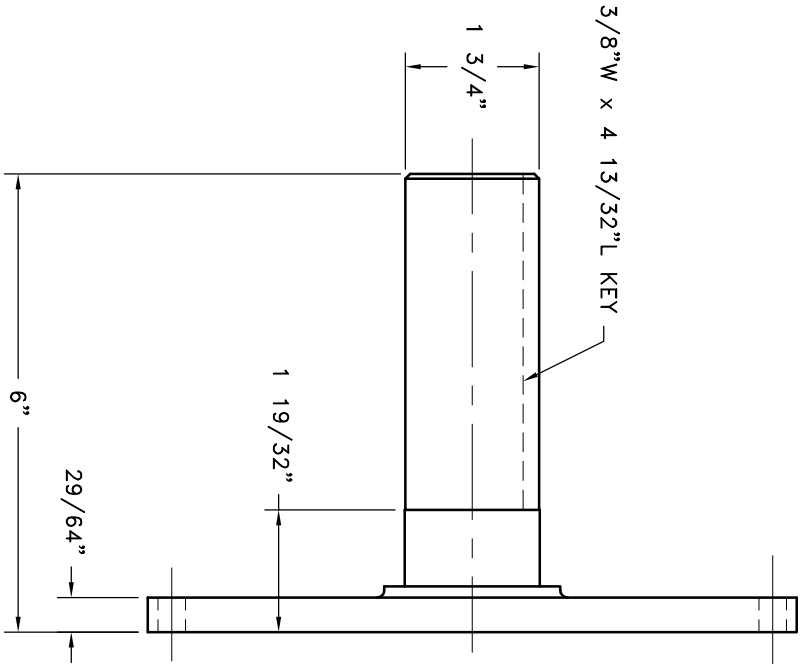
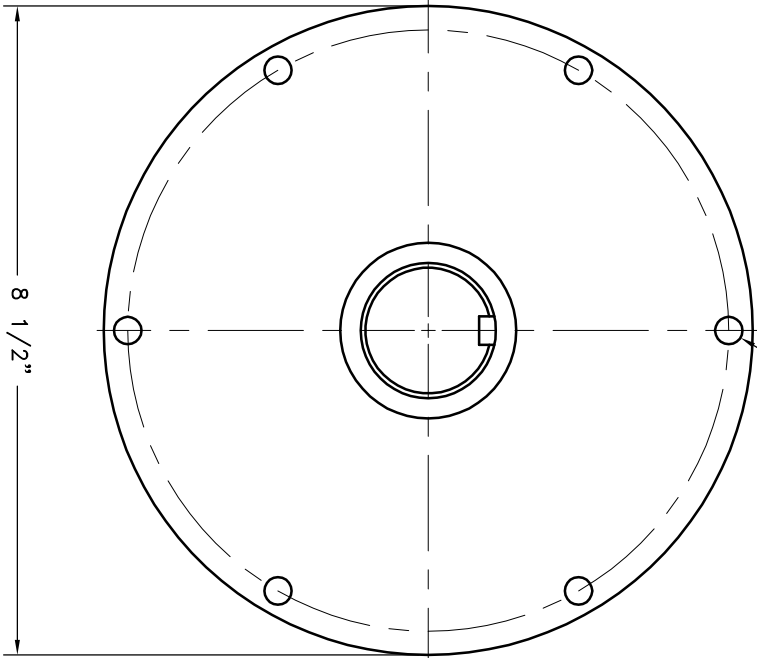


REV	DATE	CHANGE DESCRIPTION	MOD. BY	CHK1	CHK2

(6) 23/64 HOLES EQ.  
SPACED ON A 7 7/8" B.C.



# S.A.E. 6 1/2 STUB SHAFT

<b>SYMBOLS</b> STRAIGHTNESS ANGULARITY SQUAREDNESS CONCENTRICITY TRUE POSITION ROUNDTNESS CIRCULAR RUN OUT TOTAL RUN OUT FINISH		DET. PART NUMBER DESCRIPTION QTY. DO NOT SCALE TOLERANCES UNLESS OTHERWISE SPECIFIED FRACTION ±1/32 DECIMAL .000 ±.005 .000 ±.005 .000 ±.005 .000 ±.005		<b>HAYES</b> MANUFACTURING INC. ® TITLE S.A.E. 6 1/2 STUB SHAFT MATERIAL S.A.E. 6 1/2 STUB SHAFT	
BREAK ALL SHARP CORNERS .010 TO .020 STAMP OR MARK DRAWING NO.		DRAWN BY SLEETING CHECKED BY R.J.H.		DATE 06-22-06 SCALE DRAWING NO. 26-02A51 SHEET OF REV.	

THIS DRAWING IS THE PROPERTY OF HAYES MFG. INC. AND IS LOANED TO YOU FOR THE EXCLUSIVE PURPOSE OF THE WORK SPECIFIED. IT SHALL BE USED AS A MEANS OF REFERENCE TO WORK FURNISHED BY HAYES MFG. INC. AND SHALL NOT BE REPRODUCED, COPIED, LOANED OR OTHERWISE DISPOSED OF, DIRECTLY OR INDIRECTLY, WITHOUT THE WRITTEN CONSENT OF HAYES MFG. INC. IT IS TO BE SUBMITTED TO OUTSIDE PARTIES FOR EXAMINATION WITHOUT OUR CONSENT.