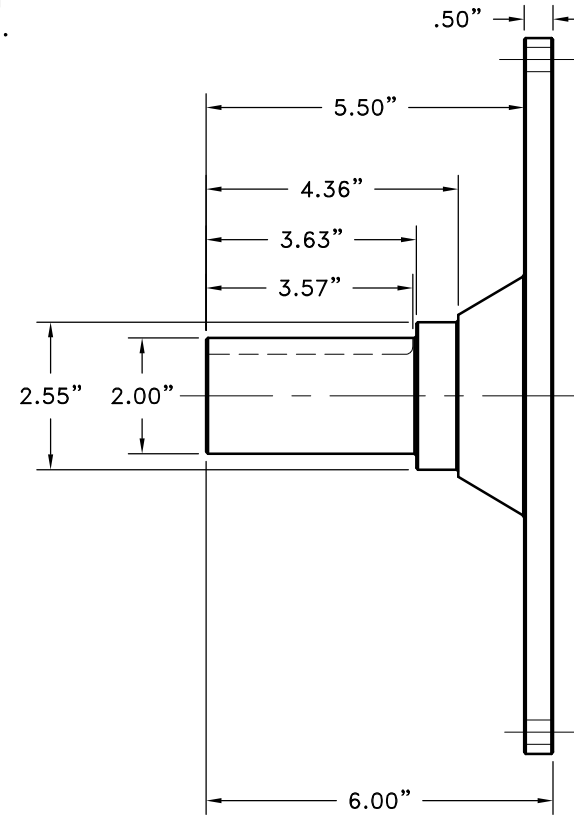
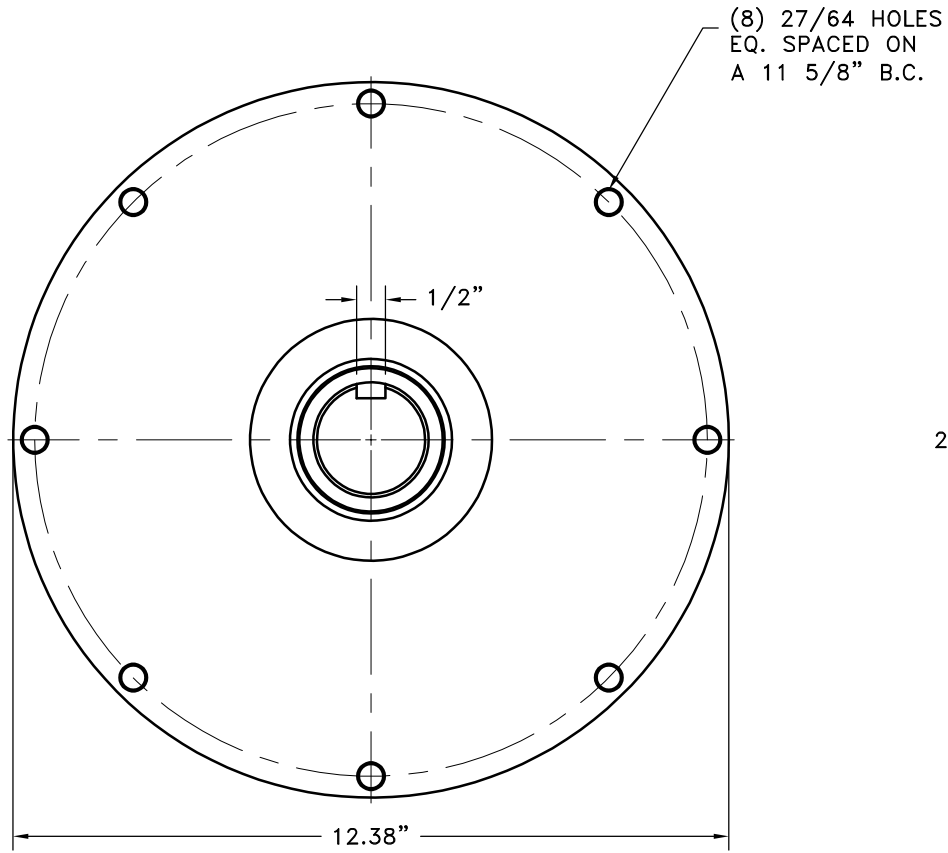


REV	DATE	CHANGE DESCRIPTION	MOD. BY	CK1	CK2
A	03/31/2014	UPDATED PRINT PER VENDOR SHAFT	KNH	ML	JM



### S.A.E. 10 STUB SHAFT

THIS DRAWING IS THE PROPERTY OF HAYES MFG. INC. AND IS LOANED SUBJECT TO THE CONDITION THAT IT SHALL NOT BE REPRODUCED, COPIED, LOANED OR OTHERWISE DISPOSED OF, DIRECTLY OR INDIRECTLY. IT SHALL BE USED AS A MEANS OF REFERENCE TO WORK FURNISHED BY THIS COMPANY ONLY AND IS NOT TO BE SUBMITTED TO OUTSIDE PARTIES FOR EXAMINATION WITHOUT OUR CONSENT.

SYMBOLS	DET.	PART NUMBER	DESCRIPTION	QTY.
<ul style="list-style-type: none"> <li>— FLATNESS</li> <li>— STRAIGHTNESS</li> <li>— ANGULARITY</li> <li>⊥ PERPENDICULARITY</li> <li>∥ PARALLELISM</li> <li>⊙ CONCENTRICITY</li> <li>⊕ TRUE POSITION</li> <li>○ ROUNDNESS</li> <li>⊘ CIRCULAR RUN OUT</li> <li>⊘ TOTAL RUN OUT</li> <li>⊘ CYLINDRICITY</li> <li>✓ FINISH</li> </ul>	DO NOT SCALE DRAWING TOLERANCES UNLESS OTHERWISE SPECIFIED 125 MAXIMUM ANGLE ±1/2° FRACTION ±1/32 DECIMAL .00 ±.01 .000 ±.005 .0000 ±.0005			
			TITLE SAE 10 STUB SHAFT	
			MATERIAL	
CLASS PHOENIX	MAKE: <input type="checkbox"/> BUY: <input checked="" type="checkbox"/>	DRAWN BY SIETING	DATE 06-22-06	DRAWING NO. 26-03G54
DESCRIPTION ST SHAFT DR PLATE SAE10x2x3.57		CHECKED BY RJH	SCALE	SHEET OF REV.