

**SPECIAL FOR D902**

## 1. HOUSING FOR KUBOTA ENGINES DF972 - WG972

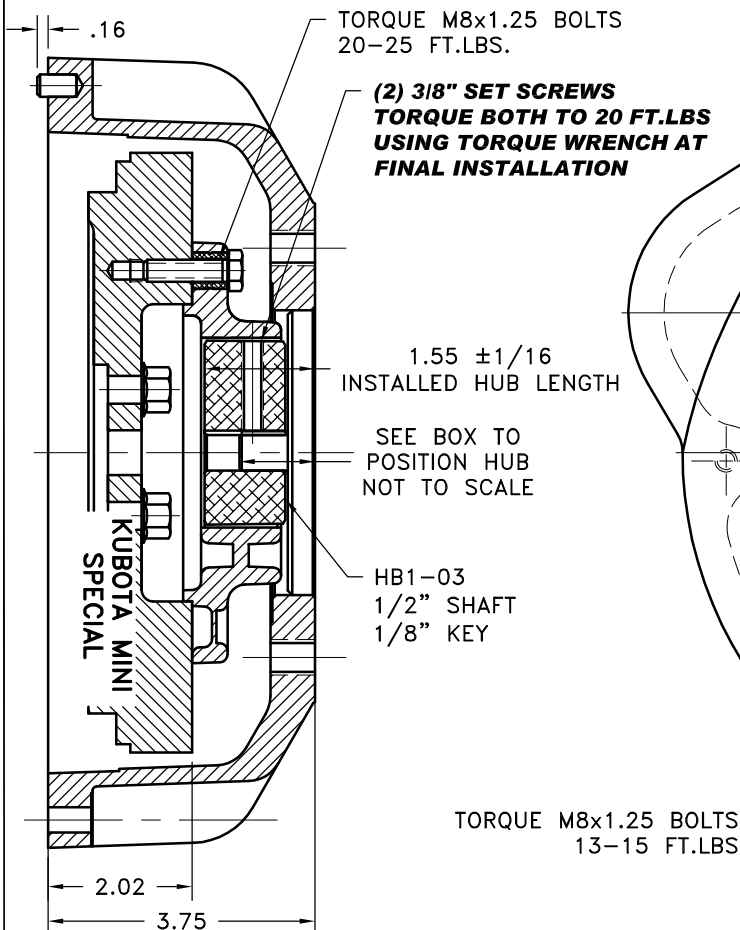
SAE "B" PUMP MOUNT  
3.25 PILOT DIA., 2 BOLT VERTICAL  
AND HORIZONTAL AND 4 BOLT  
(4) 1/2-13 TAPPED HOLES ON A 5.75 B.C.  
(4) 1/2-13 TAPPED HOLES ON A 5.00 B.C.

**NOTE!!!!**

**IMPROPER INSTALLATION OF HUB COULD CAUSE  
PREMATURE WEAR AND OR FAILURE.**

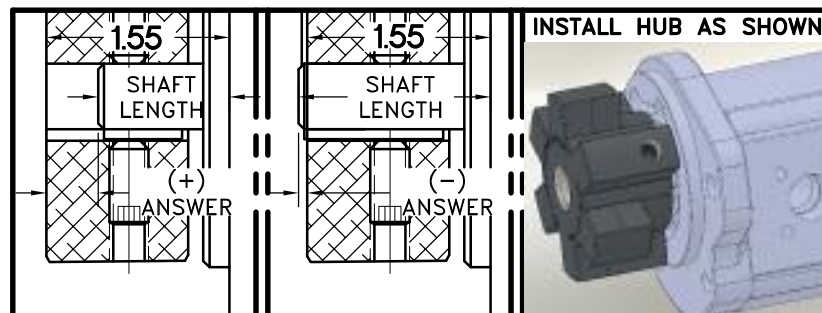
IF YOU HAVE QUESTIONS CONCERNING LOCATION  
OF METAL HUB ON PUMP SHAFT PLEASE CONTACT  
DISTRIBUTOR OR FACTORY FOR FURTHER  
INFORMATION.

**BOTH HUB SET SCREWS MUST BE PROPERLY  
TORQUED TO 25 FT.LBS. USING TORQUE WRENCH .**  
**PLEASE CONTACT DISTRIBUTOR OR FACTORY FOR  
ANY FURTHER QUESTIONS.**



TORQUE M8x1.25 BOLTS  
13-15 FT.LBS

**NOTE: THIS STEP IS IMPORTANT TO ENSURE FULL SHAFT ENGAGEMENT.**



**INSTALL HUB AS SHOWN**

SYMBOLS		DET.	PART NUMBER	DESCRIPTION	QTY.
<div><div>—</div>FLATNESS</div> <div><div>—</div>STRAIGHTNESS</div> <div><div>—</div>ANGULARITY</div> <div><div>⊥</div>PERPENDICULARITY</div> <div><div>∥</div>PARALLELISM</div> <div><div>⊙</div>CONCENTRICITY</div> <div><div>⊕</div>TRUE POSITION</div> <div><div>⊘</div>ROUNDNESS</div> <div><div>↗</div>CIRCULAR RUN OUT</div> <div><div>↘</div>TOTAL RUN OUT</div> <div><div>↻</div>CYLINDRICITY</div> <div><div>—</div>FINISH</div>	<div>DO NOT SCALE</div> <div>DRAWING</div> <div>TOLERANCES UNLESS OTHERWISE SPECIFIED</div> <div>725 MAXIMUM</div> <div>ANGLE ±1/2°</div> <div>FRACTION ±1/32</div> <div>DECIMAL</div> <div>.000 ±.01</div> <div>.0000 ±.0005</div>	<div><div><b>HAYES</b></div><div>MANUFACTURING INC. ®</div></div>	<div>TITLE</div> <div>KUBOTA MINI HEX~FLX ASSY</div> <div>MATERIAL</div>		
<div>- UNLESS OTHERWISE SPECIFIED -</div> <div>REMOVE FIRST THREAD</div> <div>ON ALL TAPPED HOLES</div> <div>BREAK ALL SHARP CORNERS .010 TO .020</div> <div>STAMP OR MARK DRAWING NO.</div>		<div>DRAWN BY</div> <div>DATE</div> <div>CHECKED BY</div> <div>R.I.H</div>	<div>SIETING</div> <div>SCALE</div>	<div>DRAWING NO.</div> <div>044-0-HB1-03-B22</div> <div>SHEET OF REV.</div>	<div>07-01-08</div>



**HAYES**  
MANUFACTURING

TITLE	KLUBOTA MINI HEX~EL X ASS'Y
-------	-----------------------------

MATERIAL		
DRAWN BY SIETING	DATE 07-01-08	DRAWING NO. 044-0-HB1-03-B22
CHECKED BY D.H.	SCALE	SHEET OF REV

NOTE: REMOVE HUB FROM ASS'Y, PRESET HUB ON SHAFT AS SHOWN. TORQUE BOTH SET SCREWS TO 25 FT.LBS. USING TORQUE WRENCH. SHAFT SHOULD HAVE A MINIMUM OF  $3/4"$  OF ENGAGEMENT IF NOT CONTACT FACTORY FOR RECOMMENDATIONS (231) 879-3372 TO GET HUB PRESET USE THIS EQUATION:

**PERFORM CALCULATION BELOW:**

### 1.55 - SHAFT LENGTH - HUB PRESET

IF YOUR ANSWER IS (+) SHAFT IS INSIDE OF HUB, IF  
YOUR ANSWER IS (-) SHAFT STICKS OUT OF HUB.  
(SEE BOXES)

THIS DRAWING IS THE PROPERTY OF HAYES MFG. INC. AND IS LOANED  
SUBJECT TO THE CONDITION THAT IT SHALL NOT BE REPRODUCED,  
COPIED, LOANED OR OTHERWISE DISPOSED OF, DIRECTLY OR INDIRECTLY.  
IT SHALL BE USED AS A MEANS OF REFERENCE TO WORK FURNISHED BY  
THIS COMPANY ONLY AND IS NOT TO BE SUBMITTED TO OUTSIDE PARTIES  
FOR EXAMINATION WITHOUT OUR CONSENT.