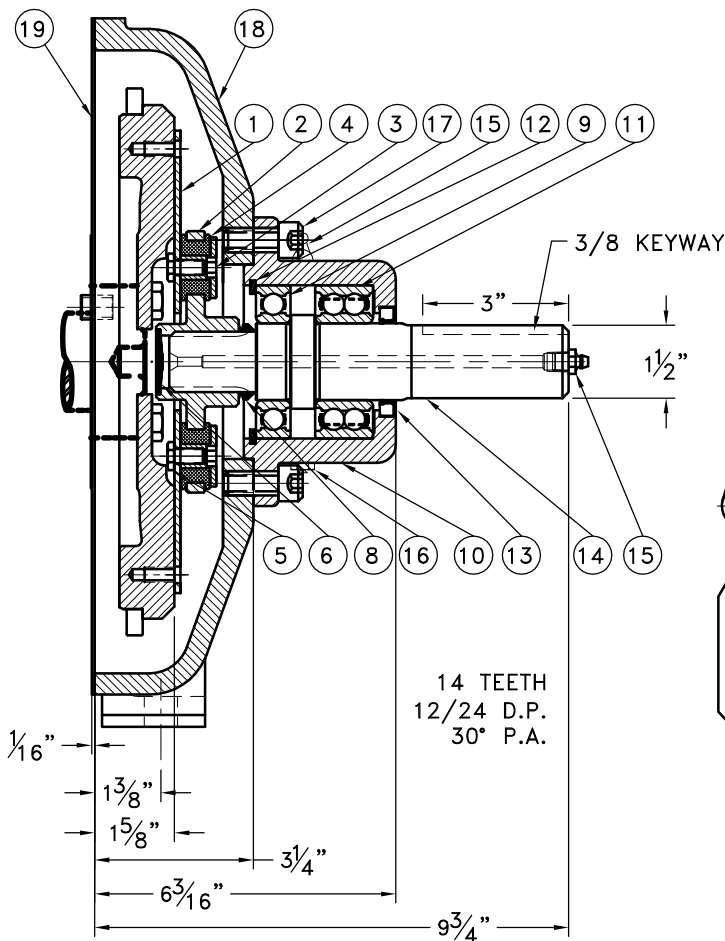
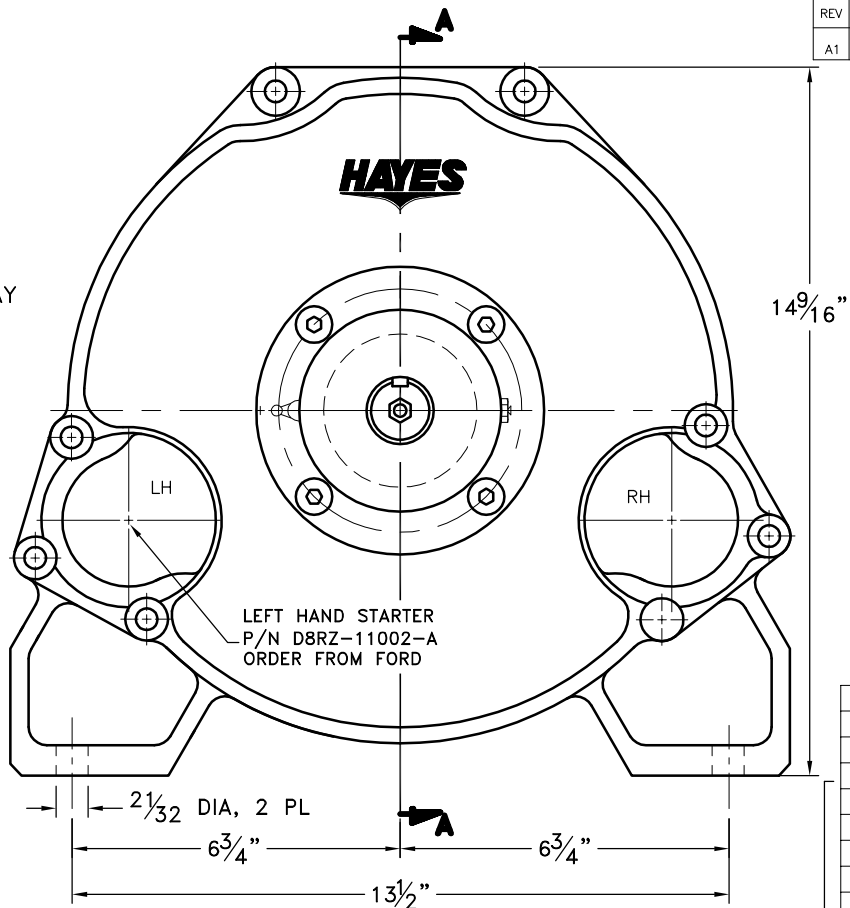


REV	DATE	CHANGE DESCRIPTION	MOD.BY	CK1	CK2
A1	01/12/2004	FIXED DETAILS AND NUMBERING.	ZS	RJH	HM



14 TEETH
12/24 D.P.
30° P.A.



BEARING SUPPORTED
STUB SHAFT
SUB-ASS'Y #126088

COUPLING ASS'Y
125010

ASSEMBLY NOTE:

ENSURE THAT THE GREASE ZERT
AND RELIEF VALVE ARE LOCATED
HORIZONTAL WHEN MOUNTING ON
TO PUMP MOUNT PLATE.

REPLACES: 877001

19	855265-LH	STARTER PLATE	1
18	881444-01	HOUSING	1
17	BOLT	1/2-13x1-1/8 SHCS	4
16	1093K11	RELIEF VALVE	1
15	600000	GREASE ZERT	2
14	126087	SPLINED SHAFT	1
13	15830	SEAL	1
12	RR-314	SPIROLOX SNAP RING	1
11	5208WD	DOUBLE BEARING	1
10	125007	BEARING HOUSING	1
9	208P	BEARING	1
8	VS-032	V-RING	1
7	801912	GREASE	1
6	R-0017-01	GREASE PLUG	1
5	HX300	SPEC. 5/16-24x5/8 HHB Y D	8
4	H52500	NEOPRENE INSERT	8
3	123729-01	THREADED BUSHING	8
2	125008	COUPLING HUB	1
1	124319	FLYWHEEL PLATE	1

NOTES:

- LIGHTLY GREASE INTERNAL AND EXTERNAL AREA OF SPLINE AT ASSEMBLY USING SUPPLIED COUPLING GREASE (OVER GREASING COULD CAUSE A HYDRAULIC TYPE LIFT ON SEALS).
- AT ASSEMBLY GREASE BEARING HOUSING UNTIL PIN EXTENDS FROM PRESSURE RELIEF VALVE (LOCATED 180° FROM GREASE ZERT).** USE OF AN UNLEADED EXTREME PRESSURE LITHIUM GREASE, WITH NLGI NO.2 GRADE IS RECOMMENDED. RUN TIME BETWEEN GREASINGS NOT TO EXCEED 2,000 HOURS.
- WARNING!!!** INJURY OR DEATH FROM A ROTATING STUB SHAFT CAN OCCUR IF A CONDITION EXISTS WHICH WOULD CAUSE THE SHAFT TO BREAK OR COME APART FROM ANY PART OF THE ASSEMBLY. DEPENDING UPON THE APPLICATION (FOR EXAMPLE, FAN, PULLEY, SHEAVE, ETC.), THE AREA AROUND THE STUB SHAFT MUST BE SUFFICIENTLY GUARDED SO THAT IN THE EVENT OF FAILURE, THE GUARD WILL CONTAIN ANY AIRBORNE PARTS.

THIS DRAWING IS THE PROPERTY OF HAYES MFG. INC. AND IS LOANED SUBJECT TO THE CONDITION THAT IT SHALL NOT BE REPRODUCED, COPIED, LOANED OR OTHERWISE DISPOSED OF, DIRECTLY OR INDIRECTLY. IT SHALL BE USED AS A MEANS OF REFERENCE TO WORK FURNISHED BY THIS COMPANY ONLY AND IS NOT TO BE SUBMITTED TO OUTSIDE PARTIES FOR EXAMINATION WITHOUT OUR CONSENT.

SYMBOLS	DET.	PART NUMBER	DESCRIPTION	QTY.
——— FLATNESS ——— STRAIGHTNESS ——— ANGULARITY ——— PERPENDICULARITY ——— PARALLELISM ——— CONCENTRICITY ——— TRUE POSITION ——— ROUNDNESS ——— CIRCULAR RUN OUT ——— TOTAL RUN OUT ——— CYLINDRICITY ——— FINISH	DO NOT SCALE DRAWING TOLERANCES UNLESS OTHERWISE SPECIFIED 125 MAXIMUM ANGLE ±1/2° FRACTION ±1/32 DECIMAL .00 ±.01 .000 ±.005 .0000 ±.0005	MAKE: <input type="checkbox"/> BUY: <input type="checkbox"/>	HAYES MANUFACTURING INC. ® FORD VSG 413 BEARING STUB SHAFT ASS'Y MATERIAL	
CLASS	DESCRIPTION	DRAWN BY HAYEMAN	DATE 7-6-95	DRAWING NO. 877004
		CHECKED BY RJH	SCALE	SHEET OF REV.