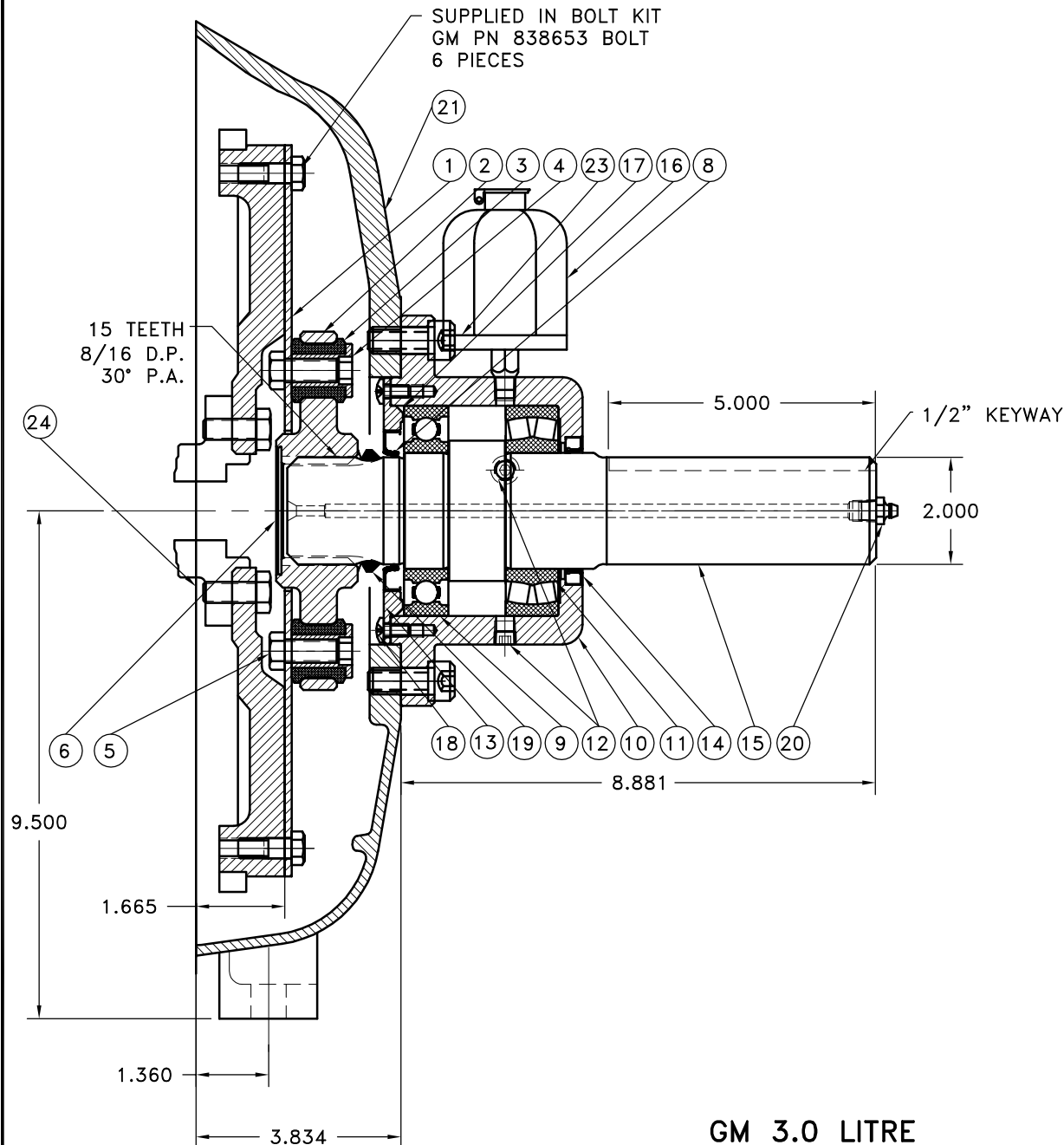


REV	DATE	CHANGE DESCRIPTION	MOD.BY	CK1	CK2
D	04/11/2005	CHANGED TO OIL RESER.# OF PLUGS	ZS	RJH	HM

ATTENTION!!!

1. LIGHTLY GREASE INTERNAL AND EXTERNAL AREA OF SPLINE AT ASSEMBLY USING COUPLING GREASE (OVER GREASING COULD CAUSE A HYDRAULIC TYPE LIFT ON SEALS).
2. THE BEARING HOUSING IS SHIPPED FILLED TO OVERFLOW WITH MOBILE 1 5W/30 (3/4 OF A QUART). ONCE ASSEMBLY HAS BEEN INSTALLED ON ENGINE, CHECK TO MAKE SURE THAT OIL IS STILL FULL.
3. OIL MUST BE CHANGED EVERY 800-1000 HOURS OR EACH MONTH WHICH EVER COMES FIRST. RECORDS MUST BE KEPT ON OIL CHANGES OR WARRANTY WILL BE VOID.
4. WARNING!!! INJURY OR DEATH FROM A ROTATING STUB SHAFT CAN OCCUR IF A CONDITION EXISTS WHICH WOULD CAUSE THE SHAFT TO BREAK OR COME APART FROM ANY PART OF THE ASSEMBLY. DEPENDING UPON THE APPLICATION (FOR EXAMPLE, FAN, PULLEY, SHEAVE, ETC.), THE AREA AROUND THE STUB SHAFT MUST BE SUFFICIENTLY GUARDED SO THAT IN THE EVENT OF FAILURE, THE GUARD WILL CONTAIN ANY AIRBORNE PARTS.



**SUB ASS'Y
126439**

**COUPLING ASS'Y
126440**

24	890007	3.0 LITRE DUST COVER	1
23	PURCHASE	1/2-13 x 1-1/4 SHCS	6
22	890002	BOLT KIT	1
21	890000-08	HOUSING	1
20	600000	GREASE ZERT	1
19	400501	V-RING SEAL	1
18	PURCHASE	1/4-20 x 1/2" BUTTON HEAD	6
17	568-154	O-RING	1
16	31141	OIL RESERVOIR	1
15	126437	SPLINED SHAFT	1
14	CRW1-R-21610	SEAL	1
13	126645	REAR SEAL ADAPTER	1
12	1/8-27	DRAIN/ OVERFLOW PLUG	3
11	22211E	SPHERICAL ROLLER BEARING	1
10	126197	BEARING HOUSING	1
9	211NP	BEARING	1
8	CR 19992	SEAL	1
7	801912	GREASE	1
6	R-0017-03	HUBBARD PLUG	1
5	HX200	7/16-20x1 HHB	12
4	123727	THREADED BUSHING	12
3	H62500	NEOPRENE INSERT	12
2	126438	COUPLING HUB	1
1	126151-03	FLYWHEEL PLATE	1

SYMBOLS		DET.	PART NUMBER	DESCRIPTION	QTY.
FLATNESS STRAIGHTNESS ANGULARITY PERPENDICULARITY PARALLELISM CONCENTRICITY TRUE POSITION ROUNDNESS CIRCULAR RUN OUT TOTAL RUN OUT CYLINDRICITY FINISH		DO NOT SCALE DRAWING TOLERANCES UNLESS OTHERWISE SPECIFIED .125" MAXIMUM ANGLE ±1/2" FRACTION ±1/32 DECIMAL .00 ±.01 .000 ±.005 .0000 ±.0005			
CLASS MAKE: <input type="checkbox"/> BUY: <input type="checkbox"/>		HAYES MANUFACTURING INC. ® TITLE GM BEARING SUPPORT ASSEMBLY MATERIAL			
DESCRIPTION		DRAWN BY LAWSON		DATE 08-27-01	
CHECKED BY RJH		SCALE		DRAWING NO. 890004 SHEET OF REV.	

THIS DRAWING IS THE PROPERTY OF HAYES MFG. INC. AND IS LOANED SUBJECT TO THE CONDITION THAT IT SHALL NOT BE REPRODUCED, COPIED, LOANED OR OTHERWISE DISPOSED OF, DIRECTLY OR INDIRECTLY. IT SHALL BE USED AS A MEANS OF REFERENCE TO WORK FURNISHED BY THIS COMPANY ONLY AND IS NOT TO BE SUBMITTED TO OUTSIDE PARTIES FOR EXAMINATION WITHOUT OUR CONSENT.