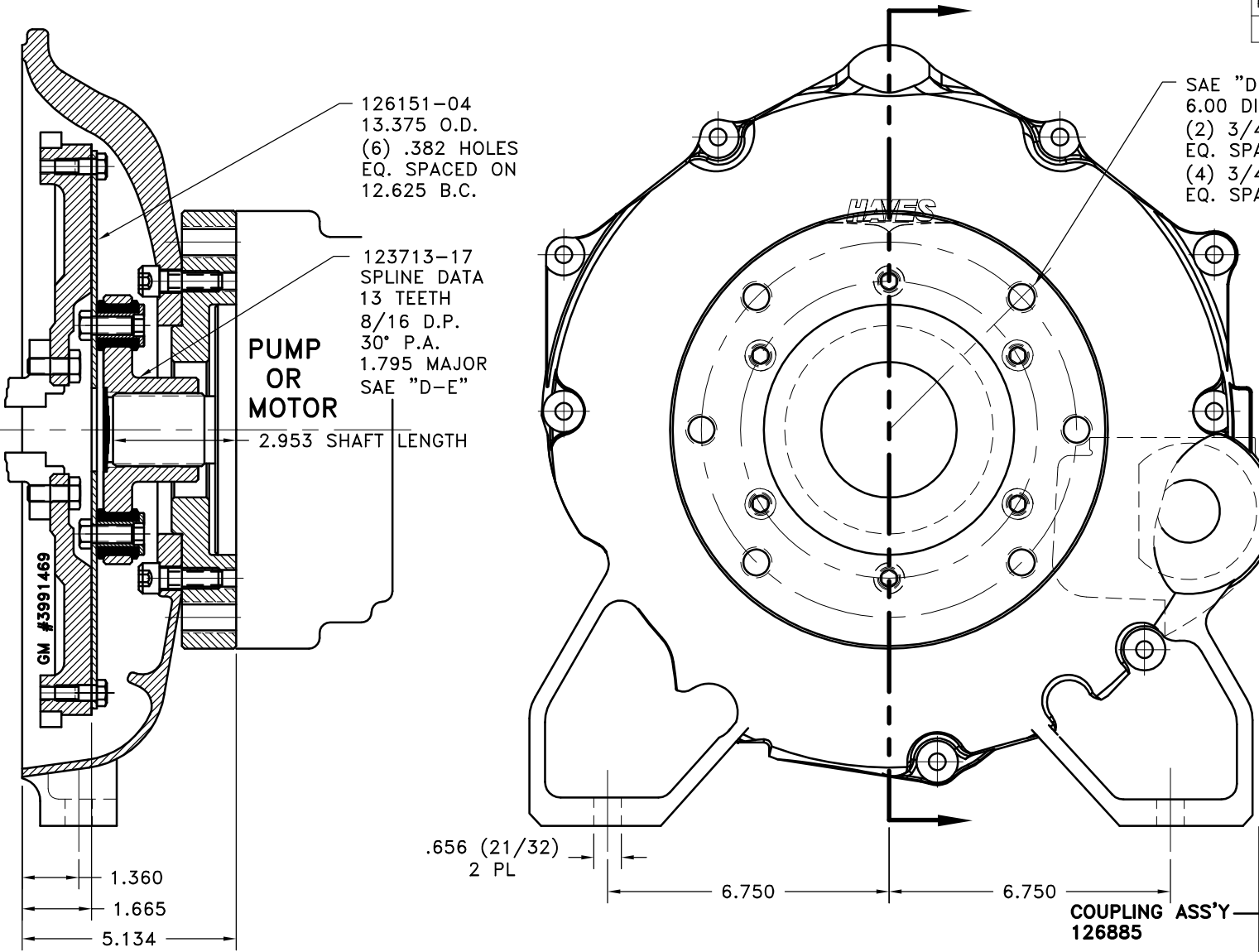


REV	DATE	CHANGE DESCRIPTION	MOD. BY	CK1	CK2



UP TO 150 HP

12	890010	DUST COVER	1
11	890016	BOLT KIT	1
10	126845	PUMP MOUNT ADAPTER	1
9	PURCHASE	1/2-13 x 1-1/2" SHCS	6
8	890000-10	HOUSING	1
7	801912	GREASE	1
6	HP-2000-S-62	HUBBARD PLUG	1
5	HX200	7/16-20x1 HHB	8
4	123727	THREADED BUSHING	8
3	H62500	NEOPRENE INSERT	8
2	123713-17	COUPLING HUB	1
1	126151-04	FLYWHEEL PLATE	1

NOTE:

1. USE FURNISHED COUPLING GREASE ON BOTH MALE & FEMALE SPLINES.
2. CAUTION: WHEN INSTALLING PUMP ON ENGINE HOUSING BE CAREFUL BOLTS DO NOT EXTEND PAST INSIDE FACE OF HOUSING AND RUB ON COUPLING ASS'Y.

GM 4.3 LITER ENGINE

THIS DRAWING IS THE PROPERTY OF HAYES MFG. INC. AND IS LOANED SUBJECT TO THE CONDITION THAT IT SHALL NOT BE REPRODUCED, COPIED, LOANED OR OTHERWISE DISPOSED OF, DIRECTLY OR INDIRECTLY. IT SHALL BE USED AS A MEANS OF REFERENCE TO WORK FURNISHED BY THIS COMPANY ONLY AND IS NOT TO BE SUBMITTED TO OUTSIDE PARTIES FOR EXAMINATION WITHOUT OUR CONSENT.

SYMBOLS	DET.	PART NUMBER	DESCRIPTION	QTY.
FLATNESS STRAIGHTNESS ANGULARITY SQUARENESS PARALLELISM CONCENTRICITY TRUE POSITION ROUNDNESS CIRCULAR RUN OUT TOTAL RUN OUT CYLINDRICITY FINISH	DO NOT SCALE DRAWING TOLERANCES UNLESS OTHERWISE SPECIFIED 12X MAXIMUM ANGLE ±1/2° FRACTION ±1/32 DECIMAL .00 ±.01 .000 ±.005 .0000 ±.0005			
			TITLE GM HOUSING & FLYWHEEL COUPLING ASS'Y MATERIAL	
		DRAWN BY SIETING CHECKED BY RJH	DATE 7-22-02 SCALE	DRAWING NO. 890017 SHEET OF REV.
- UNLESS OTHERWISE SPECIFIED - REMOVE FIRST THREAD ON ALL TAPPED HOLES BREAK ALL SHARP CORNERS .010 TO .020 STAMP OR MARK DRAWING NO.				