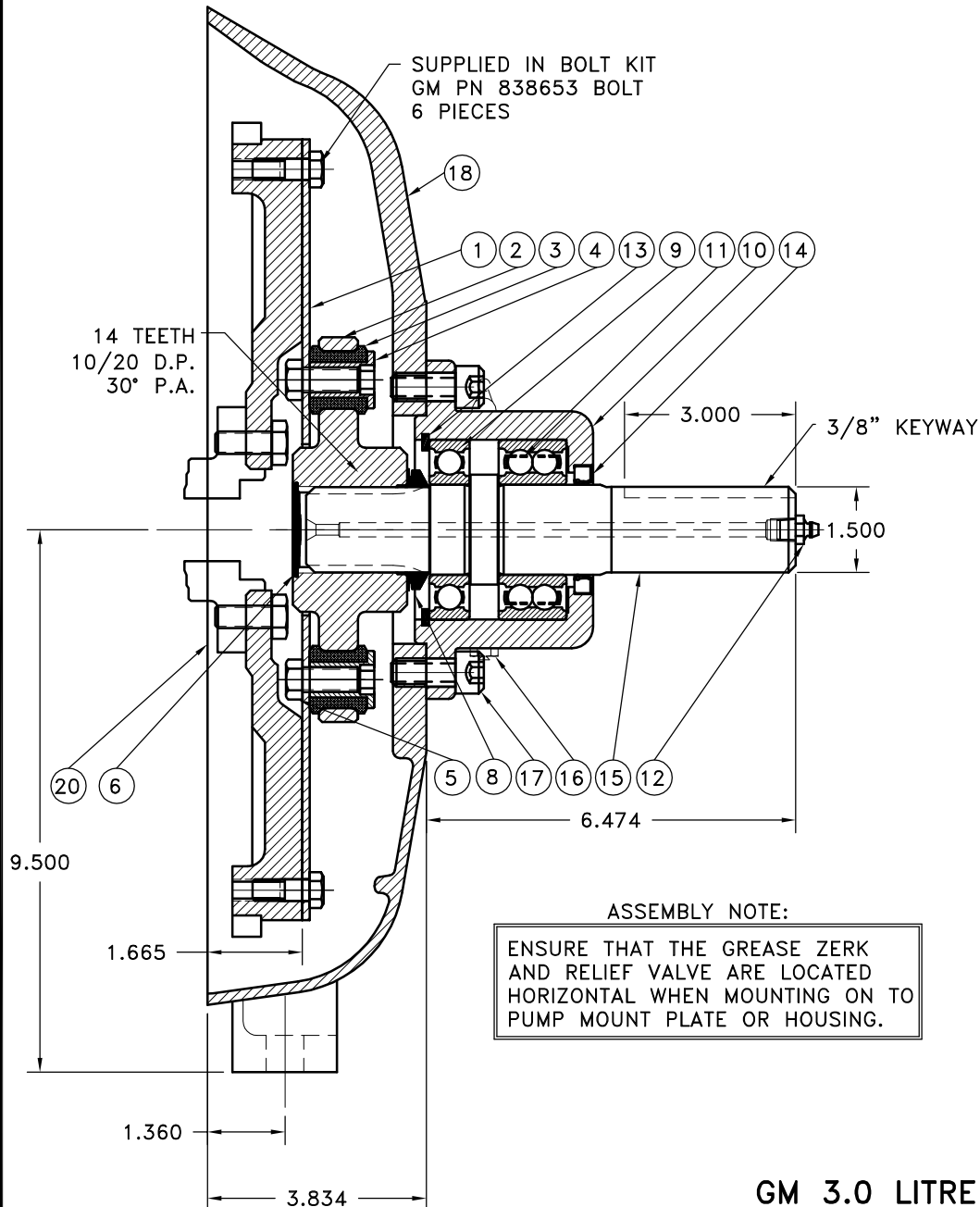


REV	DATE	CHANGE DESCRIPTION	MOD.BY	CK1	CK2
A	04/30/2012	CHANGED HOUSING P/N TO -05	ZS	HM	JM

#### NOTES:

1. LIGHTLY GREASE INTERNAL AND EXTERNAL AREA OF SPLINE AT ASSEMBLY USING SUPPLIED COUPLING GREASE (OVER GREASING COULD CAUSE A HYDRAULIC TYPE LIFT ON SEALS).
2. **AT ASSEMBLY GREASE BEARING HOUSING UNTIL PIN EXTENDS FROM PRESSURE RELIEF VALVE (LOCATED 180° FROM GREASE ZERK).** USE OF AN UNLEADED EXTREME PRESSURE LITHIUM GREASE, WITH NLGI NO.2 GRADE IS RECOMMENDED. RUN TIME BETWEEN GREASINGS NOT TO EXCEED 2,000 HOURS.
3. **WARNING!!!** INJURY OR DEATH FROM A ROTATING STUB SHAFT CAN OCCUR IF A CONDITION EXISTS WHICH WOULD CAUSE THE SHAFT TO BREAK OR COME APART FROM ANY PART OF THE ASSEMBLY. DEPENDING UPON THE APPLICATION (FOR EXAMPLE, FAN, PULLEY, SHEAVE, ETC.), THE AREA AROUND THE STUB SHAFT MUST BE SUFFICIENTLY GUARDED SO THAT IN THE EVENT OF FAILURE, THE GUARD WILL CONTAIN ANY AIRBORNE PARTS.



**ASSEMBLY NOTE:**  
ENSURE THAT THE GREASE ZERK AND RELIEF VALVE ARE LOCATED HORIZONTAL WHEN MOUNTING ON TO PUMP MOUNT PLATE OR HOUSING.

BEARING SUPPORTED  
STUB SHAFT SUB-ASS'Y  
#127247

COUPLING ASS'Y  
127249

**GM 3.0 LITRE**

20	890007	3.0 LITRE DUST COVER	1
19	890002	BOLT KIT (PRE-ASSEMBLED)	1
18	890000-05	HOUSING	1
17	BOLT	1/2-13x1-1/8 SHCS D	4
16	1093K11	RELIEF VALVE	1
15	127246	SPLINED SHAFT	1
14	15830	SEAL	1
13	RR-314	SPIROLOX	1
12	600000	GREASE ZERK	2
11	5208WD	DOUBLE BEARING	1
10	125007	BEARING HOUSING	1
9	208P	BEARING	1
8	400401	V-RING	1
7	801912	GREASE	1
6	R-0017-02	HUBBARD PLUG	1
5	BOLT	7/16-20x1 HHB Y D	12
4	123727	THREADED BUSHING	12
3	H62500	NEOPRENE INSERT	12
2	127248	COUPLING HUB	1
1	126151-03	FLYWHEEL PLATE	1

SYMBOLS		DET.	PART NUMBER	DESCRIPTION	QTY.
FLATNESS STRAIGHTNESS ANGULARITY PERPENDICULARITY PARALLELISM CONCENTRICITY TRUE POSITION ROUNDNESS CIRCULAR RUN OUT TOTAL RUN OUT CYLINDRICITY FINISH		DO NOT SCALE DRAWING TOLERANCES UNLESS OTHERWISE SPECIFIED 125 MAXIMUM ANGLE ±1/2° FRACTION ±1/32 DECIMAL .00 ±.01 .000 ±.005 .0000 ±.0005			
CLASS MAKE: <input type="checkbox"/> BUY: <input type="checkbox"/>		<b>HAYES</b> MANUFACTURING INC. ® <b>TITLE</b> GM BEARING SUPPORT ASSEMBLY <b>MATERIAL</b>			
DESCRIPTION		DRAWN BY R/JH		DATE SCALE DRAWING NO. <b>890019</b> SHEET OF REV.	

THIS DRAWING IS THE PROPERTY OF HAYES MFG. INC. AND IS LOANED SUBJECT TO THE CONDITION THAT IT SHALL NOT BE REPRODUCED, COPIED, LOANED OR OTHERWISE DISPOSED OF, DIRECTLY OR INDIRECTLY. IT SHALL BE USED AS A MEANS OF REFERENCE TO WORK FURNISHED BY THIS COMPANY ONLY AND IS NOT TO BE SUBMITTED TO OUTSIDE PARTIES FOR EXAMINATION WITHOUT OUR CONSENT.