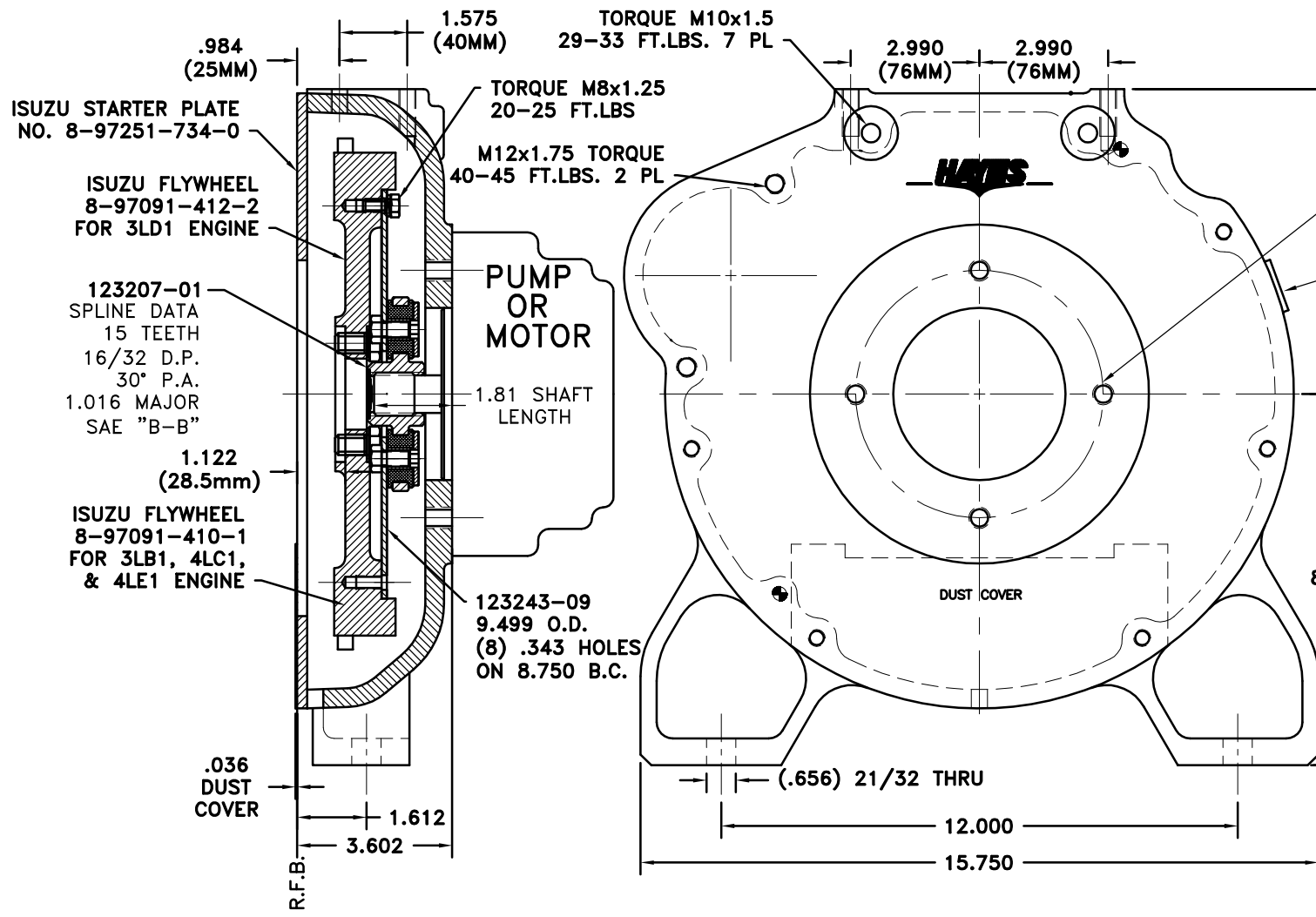
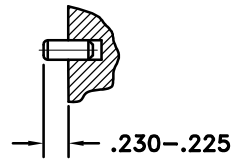


REV	DATE	CHANGE DESCRIPTION	MOD.BY	CK1	CK2
C	09/24/2001	ADDED SECOND SAE "B" PUMP MOUNT	ZS		



SAE "B" MOUNT
 4.00 DIA PUMP PILOT
 (4) .422 DR THRU
 1/2-13 TAP THRU
 EQ. SPACED ON 5.75 B.C.
 TORQUE 50-55 FT.LBS.
 OPTIONAL BOSS FOR
 MAG PICK UP

NOTE: INSTALL 2 DOWEL PINS



UP TO 50 HP

QTY	DESCRIPTION	PART NUMBER
1	FLYWHEEL PLATE	123243-09
1	COUPLING HUB	123207-01
6	NEOPRENE INSERT	H52500
6	5/16-24x5/8 HHB	HX100
1	THREADED BUSHING	123729-01
1	HUBBARD PLUG	HP-1125-S-32
1	GREASE	801912
1	HOUSING	902000-03
2	M8x16mm DOWEL	PURCHASE
1	DUST COVER	902004
1	BOLT KIT	902003

FLYWHEEL COUPLING ASS'Y 124643

NOTE:

- HOUSING FOR ISUZU L-SERIES ENGINES USE FLYWHEEL NO. 8-97091-412-2 FOR 3LD1 ENGINES AND FLYWHEEL NO. 8-97091-410-1 FOR 3LB1, 4LC1, & 4LE1 ENGINES.
- USE FURNISHED TEXACO 1912 COUPLING GREASE ON BOTH EXTERNAL & INTERNAL SPLINE.

THIS DRAWING IS THE PROPERTY OF HAYES MFG. INC. AND IS LOANED SUBJECT TO THE CONDITION THAT IT SHALL NOT BE REPRODUCED, COPIED, LOANED OR OTHERWISE DISPOSED OF, DIRECTLY OR INDIRECTLY. IT SHALL BE USED AS A MEANS OF REFERENCE TO WORK FURNISHED BY THIS COMPANY ONLY AND IS NOT TO BE SUBMITTED TO OUTSIDE PARTIES FOR EXAMINATION WITHOUT OUR CONSENT.

SYMBOLS	DET.	PART NUMBER	DESCRIPTION	QTY.
▨ FLATNESS — STRAIGHTNESS ∠ ANGULARITY ⊥ SQUARENESS ∥ PARALLELISM ⊙ CONCENTRICITY ⊕ TRUE POSITION ○ ROUNDNESS ⊖ CIRCULAR RUN OUT ⊖ TOTAL RUN OUT ⊖ CYLINDRICITY √ FINISH	DO NOT SCALE DRAWING TOLERANCES UNLESS OTHERWISE SPECIFIED 125 MAXIMUM ANGLE ±1/2° FRACTION ±1/32 DECIMAL .00 ±.01 .000 ±.005 .0000 ±.0005			
- UNLESS OTHERWISE SPECIFIED - REMOVE FIRST THREAD ON ALL TAPPED HOLES BREAK ALL SHARP CORNERS .010 TO .020 STAMP OR MARK DRAWING NO.		TITLE ISUZU L-SERIES FLYWHEEL COUPLING WITH FOOT MOUNT HOUSING MATERIAL	DRAWN BY HAVEMAN	DATE 1-11-98
		DRAWING NO. 902005	CHECKED BY RJH	SCALE SHEET OF REV.