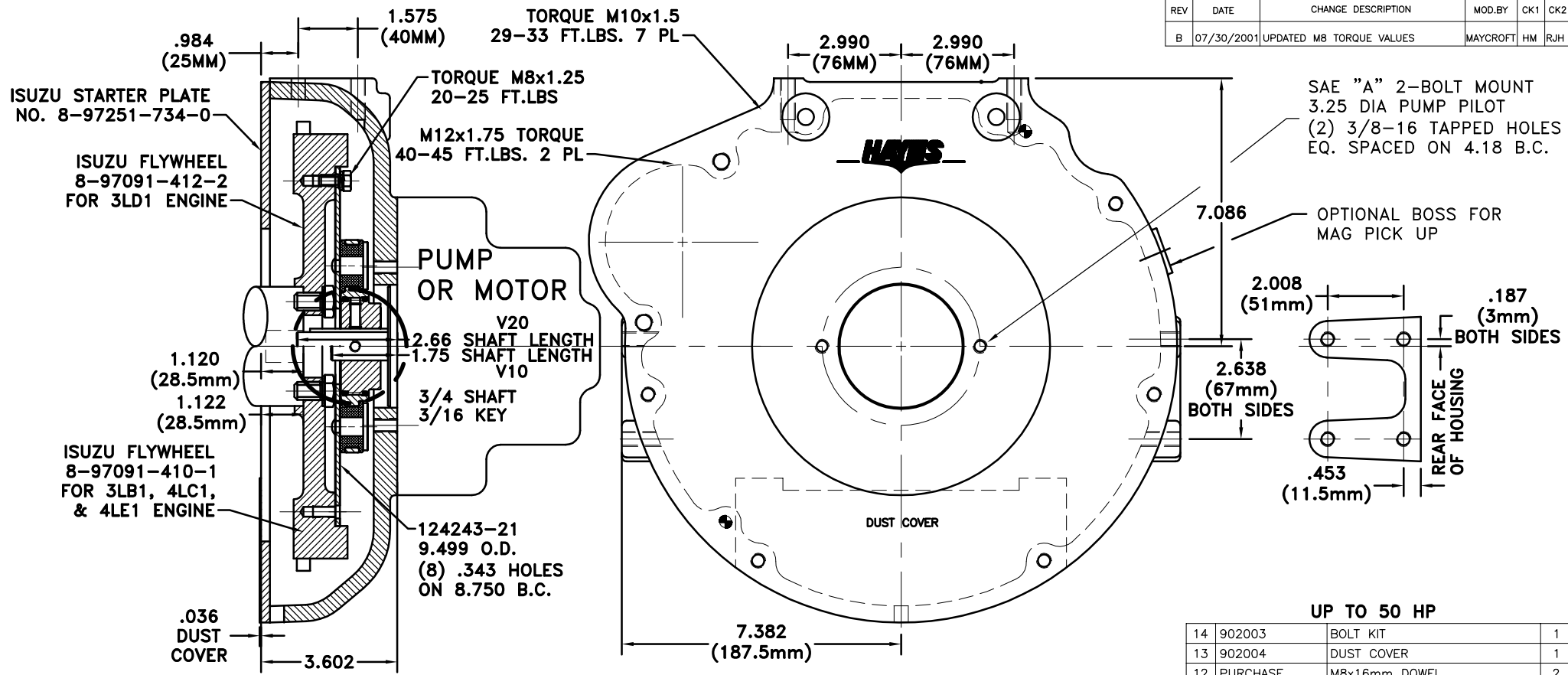
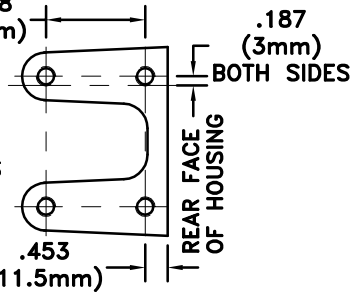


REV	DATE	CHANGE DESCRIPTION	MOD. BY	CK1	CK2
B	07/30/2001	UPDATED M8 TORQUE VALUES	MAYCROFT	HM	RJH



SAE "A" 2-BOLT MOUNT  
 3.25 DIA PUMP PILOT  
 (2) 3/8-16 TAPPED HOLES  
 EQ. SPACED ON 4.18 B.C.

OPTIONAL BOSS FOR  
 MAG PICK UP



ISUZU STARTER PLATE  
 NO. 8-97251-734-0

ISUZU FLYWHEEL  
 8-97091-412-2  
 FOR 3LD1 ENGINE

ISUZU FLYWHEEL  
 8-97091-410-1  
 FOR 3LB1, 4LC1,  
 & 4LE1 ENGINE

TORQUE M10x1.5  
 29-33 FT.LBS. 7 PL

TORQUE M8x1.25  
 20-25 FT.LBS

M12x1.75 TORQUE  
 40-45 FT.LBS. 2 PL

PUMP  
 OR MOTOR

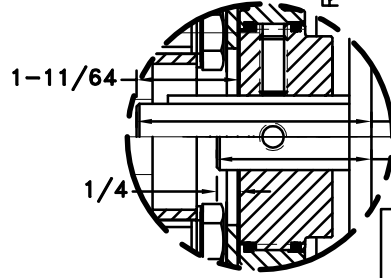
V20  
 2.66 SHAFT LENGTH  
 V10  
 1.75 SHAFT LENGTH

3/4 SHAFT  
 3/16 KEY

124243-21  
 9.499 O.D.  
 (8) .343 HOLES  
 ON 8.750 B.C.

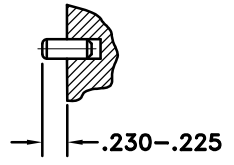
.036  
 DUST  
 COVER

R.F.B.



NOTE: REMOVE HUB FROM  
 ASS'Y, PRESET HUB ON  
 SHAFT & RE- ASSEMBLE  
 USING NUT & BOLT  
 GRADE LOC-TITE ON SET  
 SCREWS

NOTE: INSTALL 2 DOWEL PINS



NOTE:

- HOUSING FOR ISUZU L-SERIES ENGINES  
 USE FLYWHEEL NO. 8-97091-412-2 FOR 3LD1  
 ENGINES AND FLYWHEEL NO. 8-97091-410-1 FOR  
 3LB1, 4LC1, & 4LE1 ENGINES.
- USE FURNISHED TEXACO 1912 COUPLING  
 GREASE ON BOTH EXTERNAL & INTERNAL SPLINE.

FLYWHEEL COUPLING  
 ASS'Y 124764

UP TO 50 HP

QTY.	DESCRIPTION	PART NUMBER	DET.
1	FLYWHEEL PLATE	124243-21	1
1	INTERNAL SPLINED HUB	124282-02	2
1	EXTERNAL SPLINED ADAPTER	124838-07	3
6	NEOPRENE INSERT	H52500	4
6	STEEL RIVET	123206-01	5
1	O-RING	568-142	6
1	O-RING	568-143	7
1	GREASE	801912	8
1	SSSCP	5/16-18x3/4	9
1	SSSCP	5/16-18x5/8	10
1	HOUSING	902009-01	11
2	M8x16mm DOWEL	PURCHASE	12
1	DUST COVER	902004	13
1	BOLT KIT	902003	14

SYMBOLS	DET.	PART NUMBER	DESCRIPTION	QTY.
FLATNESS STRAIGHTNESS ANGULARITY SQUARENESS PARALLELISM CONCENTRICITY TRUE POSITION ROUNDNESS CIRCULAR RUN OUT TOTAL RUN OUT CYLINDRICITY FINISH	DO NOT SCALE DRAWING TOLERANCES UNLESS OTHERWISE SPECIFIED 125 MAXIMUM ANGLE ±1/2° FRACTION ±1/32 DECIMAL .00 ±.01 .000 ±.005 .0000 ±.0005			
TITLE ISUZU L-SERIES FLYWHEEL COUPLING WITH SIDE MOUNT HOUSING			DRAWN BY HAVEMAN	
MATERIAL			DATE 4-15-99	
- UNLESS OTHERWISE SPECIFIED - REMOVE FIRST THREAD ON ALL TAPPED HOLES BREAK ALL SHARP CORNERS .010 TO .020 STAMP OR MARK DRAWING NO.			DRAWING NO. 902017	
			SHEET OF REV.	

THIS DRAWING IS THE PROPERTY OF HAYES MFG. INC. AND IS LOANED  
 SUBJECT TO THE CONDITION THAT IT SHALL NOT BE REPRODUCED,  
 COPIED, LOANED OR OTHERWISE DISPOSED OF, DIRECTLY OR INDIRECTLY.  
 IT SHALL BE USED AS A MEANS OF REFERENCE TO WORK FURNISHED BY  
 THIS COMPANY ONLY AND IS NOT TO BE SUBMITTED TO OUTSIDE PARTIES  
 FOR EXAMINATION WITHOUT OUR CONSENT.