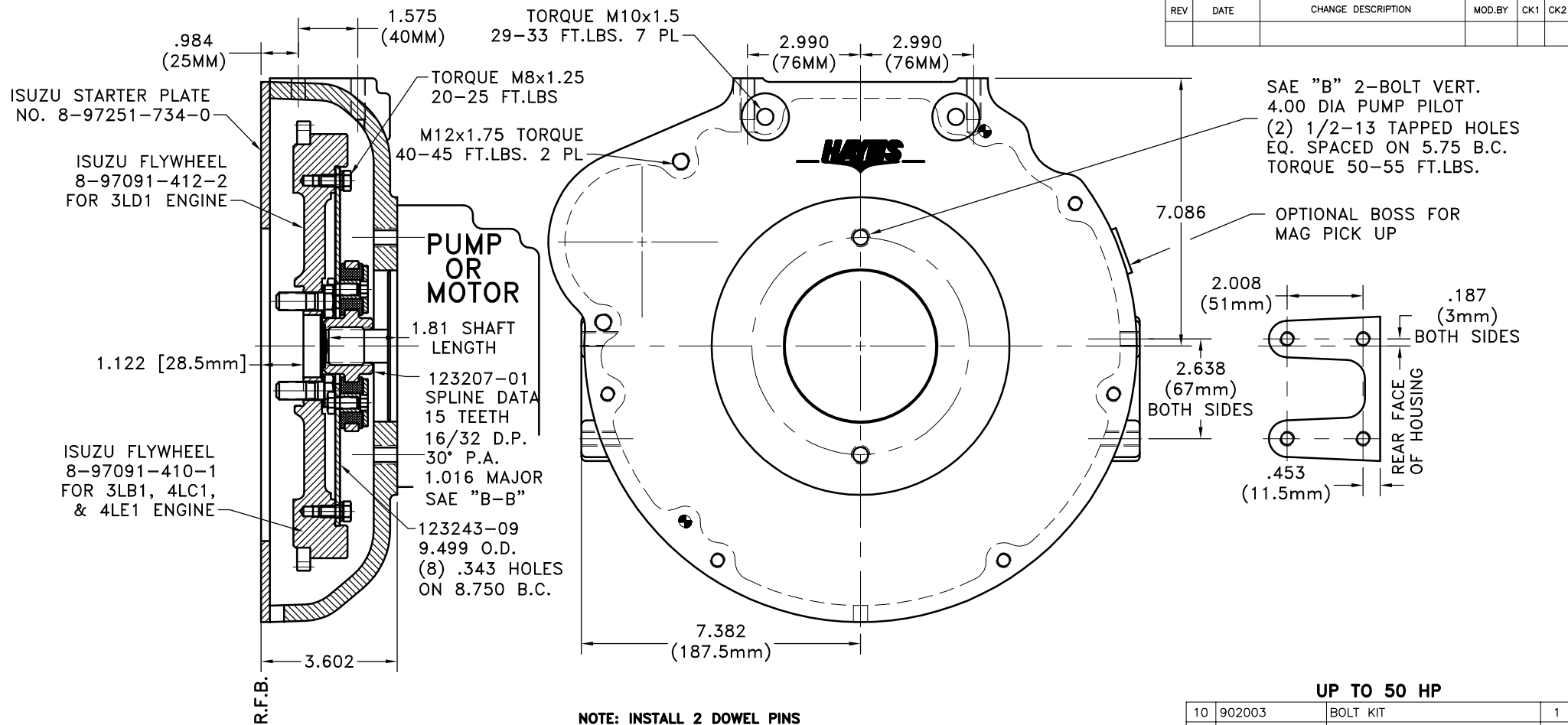
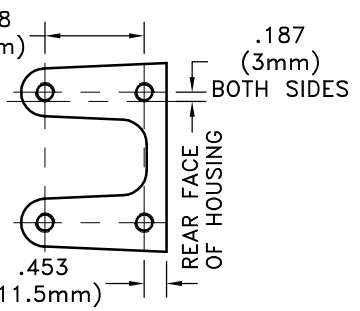


REV	DATE	CHANGE DESCRIPTION	MOD.BY	CK1	CK2



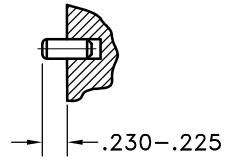
SAE "B" 2-BOLT VERT.
4.00 DIA PUMP PILOT
(2) 1/2-13 TAPPED HOLES
EQ. SPACED ON 5.75 B.C.
TORQUE 50-55 FT.LBS.

OPTIONAL BOSS FOR
MAG PICK UP



- NOTE:**
- HOUSING FOR ISUZU L-SERIES ENGINES
USE FLYWHEEL NO. 8-97091-412-2 FOR 3LD1
ENGINES AND FLYWHEEL NO. 8-97091-410-1 FOR
3LB1, 4LC1, & 4LE1 ENGINES.
 - USE FURNISHED TEXACO 1912 COUPLING
GREASE ON BOTH EXTERNAL & INTERNAL SPLINE.

NOTE: INSTALL 2 DOWEL PINS



**FLYWHEEL COUPLING
ASS'Y #124643**

UP TO 50 HP

10	902003	BOLT KIT	1
9	PURCHASE	M8x16mm DOWEL	2
8	902009-10	HOUSING	1
7	HP-1125-S-32	HUBBARD PLUG	1
6	801912	GREASE	1
5	HX100	5/16-24-5/8 BOLT	6
4	123729-01	THREADED BUSHING	6
3	H52500	NEOPRENE INSERT	6
2	123207-01	COUP. HUB [3.000\15 16/32]	1
1	123243-09	FLYWHEEL PLATE [7.5\3.000]	1

COUPLING INSTALLATION NOTE:
ROTATE COUPLING UNTIL HUB BOLTS LINE
UP BETWEEN FLYWHEEL BOLTS AND
FLYWHEEL MOUNTING HOLES LINE UP.

THIS DRAWING IS THE PROPERTY OF HAYES MFG. INC. AND IS LOANED
SUBJECT TO THE CONDITION THAT IT SHALL NOT BE REPRODUCED,
COPIED, LOANED OR OTHERWISE DISPOSED OF, DIRECTLY OR INDIRECTLY.
IT SHALL BE USED AS A MEANS OF REFERENCE TO WORK FURNISHED BY
THIS COMPANY ONLY AND IS NOT TO BE SUBMITTED TO OUTSIDE PARTIES
FOR EXAMINATION WITHOUT OUR CONSENT.

SYMBOLS	DET.	PART NUMBER	DESCRIPTION	QTY.
/ FLATNESS — STRAIGHTNESS < ANGLARITY ⊥ SQUARENESS // PARALLELISM ⊙ CONCENTRICITY ⊕ TRUE POSITION ○ ROUNDNESS ⊖ CIRCULAR RUN OUT ⊖ TOTAL RUN OUT ⊖ CYLINDRICITY √ FINISH	DO NOT SCALE DRAWING TOLERANCES UNLESS OTHERWISE SPECIFIED 125 MAXIMUM ANGLE ±1/2° FRACTION ±1/32 DECIMAL .00 ±.01 .000 ±.005 .0000 ±.0005	HAYES MANUFACTURING INC. ® TITLE ISUZU L-SERIES FLYWHEEL COUPLING WITH SIDE MOUNT HOUSING MATERIAL		
- UNLESS OTHERWISE SPECIFIED - REMOVE FIRST THREAD ON ALL TAPPED HOLES BREAK ALL SHARP CORNERS .010 TO .020 STAMP OR MARK DRAWING NO.		DRAWN BY SIETING	DATE 01-27-04 SCALE	DRAWING NO. 902035 SHEET OF REV.