

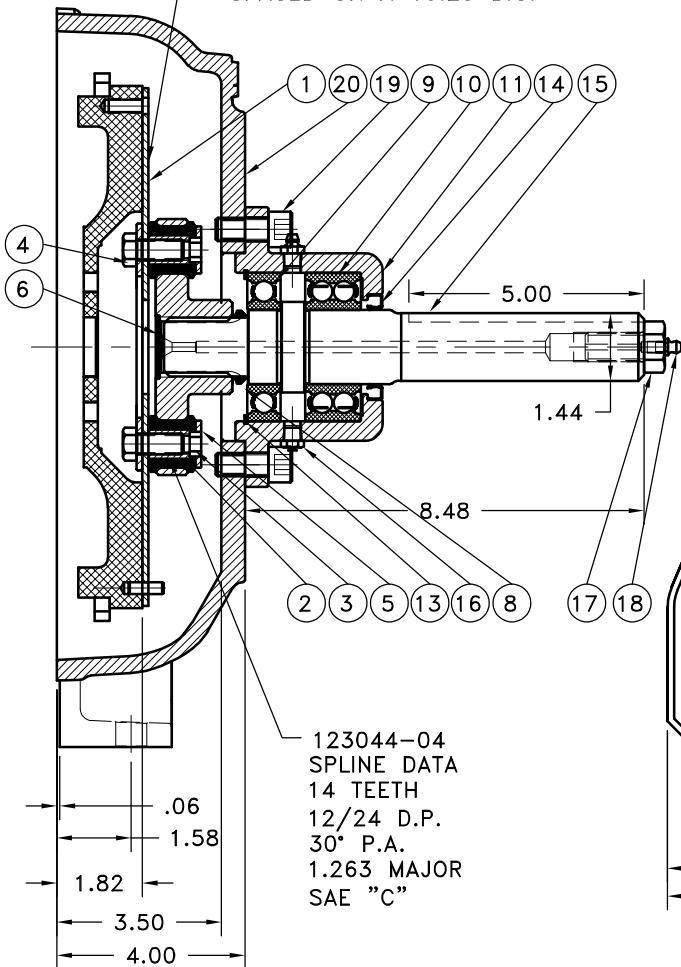
124470
11" O.D.
(6) 11/32 HOLES EQ.
SPACED ON A 10.25 B.C.
(3) 1/4" DOWEL HOLES EQ.
SPACED ON A 10.25 B.C.

905000-05
FORD 2.3L HOUSING
S.A.E. "B" PUMP MOUNT
(4) 1/2-13 TAPPED HOLES
ON A 5.00 B.C.

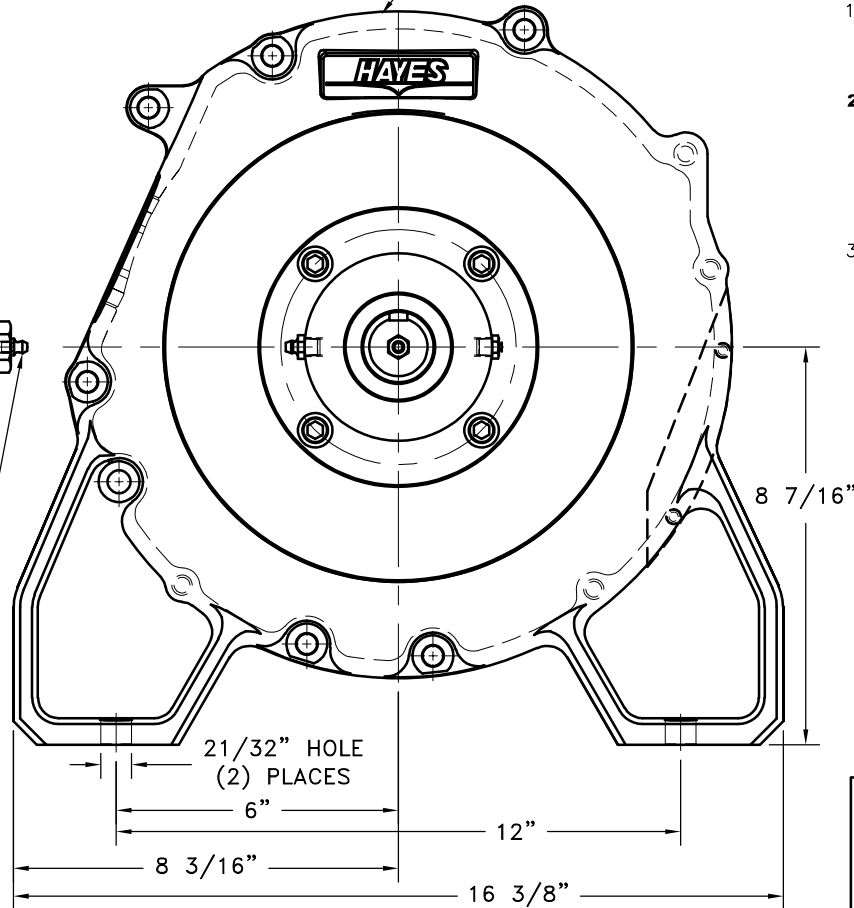
REV	DATE	CHANGE DESCRIPTION	MOD.BY	CK1	CK2
A	04/19/2012	CHANGED TO 110 HP	ZS	ML	JM

NOTES:

1. LIGHTLY GREASE INTERNAL AND EXTERNAL AREA OF SPLINE AT ASSEMBLY USING SUPPLIED COUPLING GREASE (OVER GREASING COULD CAUSE A HYDRAULIC TYPE LIFT ON SEALS).
2. **AT ASSEMBLY GREASE BEARING HOUSING UNTIL PIN EXTENDS FROM PRESSURE RELIEF VALVE (LOCATED 180° FROM GREASE ZERK).** USE OF AN UNLEADED EXTREME PRESSURE LITHIUM GREASE, WITH NLGI NO.2 GRADE IS RECOMMENDED. RUN TIME BETWEEN GREASINGS NOT TO EXCEED 2,000 HOURS.
3. **WARNING!!!** INJURY OR DEATH FROM A ROTATING STUB SHAFT CAN OCCUR IF A CONDITION EXISTS WHICH WOULD CAUSE THE SHAFT TO BREAK OR COME APART FROM ANY PART OF THE ASSEMBLY. DEPENDING UPON THE APPLICATION (FOR EXAMPLE, FAN, PULLEY, SHEAVE, ETC.), THE AREA AROUND THE STUB SHAFT MUST BE SUFFICIENTLY GUARDED SO THAT IN THE EVENT OF FAILURE, THE GUARD WILL CONTAIN ANY AIRBORNE PARTS.



123044-04
SPLINE DATA
14 TEETH
12/24 D.P.
30° P.A.
1.263 MAJOR
SAE "C"



SUB ASS'Y #125714
COUPLING ASS'Y #129234

22	905002	BOLT KIT	1
21	905000-05	HOUSING	1
20	740000	SPEC. 1/2-13 SHCS.	4
19	125294	5/8-11 HHB	1
18	609000	GREASE ZERT	1
17	1093K11	RELIEF VALVE	1
16	125713	SPLINED SHAFT	1
15	CRW1 R 15830	SEAL	1
14	RR-314	SNAP RING	1
13	600000	GREASE ZERT	1
12	125007	BEARING HOUSING	1
11	5208WD	DOUBLE BEARING	1
10	208P	BEARING	1
9	VS-032	V-RING	1
8	801912	GREASE	1
7	R-0017-01	HUBBARD PLUG	1
6	123727	THREADED BUSHING	6
5	HX200	7/16-20 x 1" HHB	6
4	H62500	NEOPRENE INSERT	6
3	123044-04	COUPLING HUB	1
2	124623	BACKING PLATE	1
1	124470	FLYWHEEL PLATE	1

PRE-ASSEMBLED
BOLT KIT

THIS DRAWING IS THE PROPERTY OF HAYES MFG. INC. AND IS LOANED SUBJECT TO THE CONDITION THAT IT SHALL NOT BE REPRODUCED, COPIED, LOANED OR OTHERWISE DISPOSED OF, DIRECTLY OR INDIRECTLY. IT SHALL BE USED AS A MEANS OF REFERENCE TO WORK FURNISHED BY THIS COMPANY ONLY AND IS NOT TO BE SUBMITTED TO OUTSIDE PARTIES FOR EXAMINATION WITHOUT OUR CONSENT.

SYMBOLS		DET.	PART NUMBER	DESCRIPTION	QTY.
——— FLATNESS ——— STRAIGHTNESS ——— ANGULARITY ——— PERPENDICULARITY ——— PARALLELISM ——— CONCENTRICITY ——— TRUE POSITION ——— ROUNDNESS ——— CIRCULAR RUN OUT ——— TOTAL RUN OUT ——— CYLINDRICITY ——— FINISH		DO NOT SCALE DRAWING TOLERANCES UNLESS OTHERWISE SPECIFIED .125" MAXIMUM ANGLE ±1/2° FRACTION ±1/32 DECIMAL .00 ±.01 .000 ±.005 .0000 ±.0005			
CLASS MAKE: <input type="checkbox"/> BUY: <input type="checkbox"/>		HAYES MANUFACTURING INC. ® TITLE FORD 2.3L COUPLING & HOUSING ASS'Y MATERIAL			
DESCRIPTION		DRAWN BY SIETING CHECKED BY RJH		DATE 02-17-2010 SCALE DRAWING NO. 905014 SHEET OF REV.	