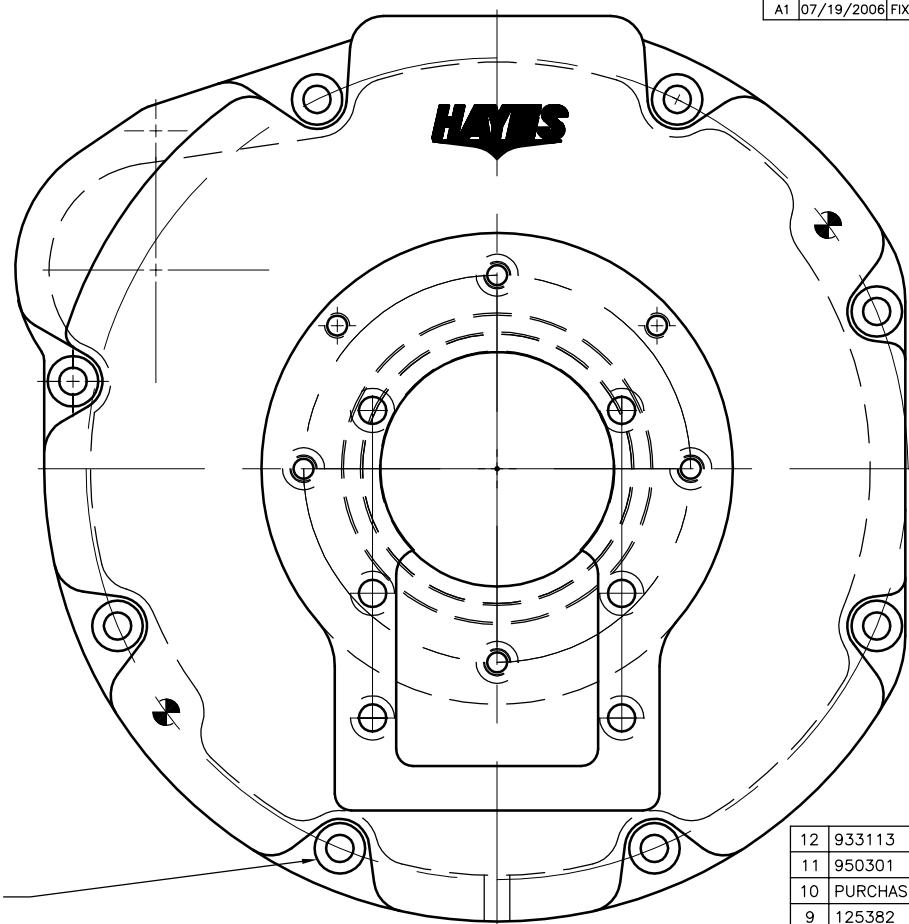
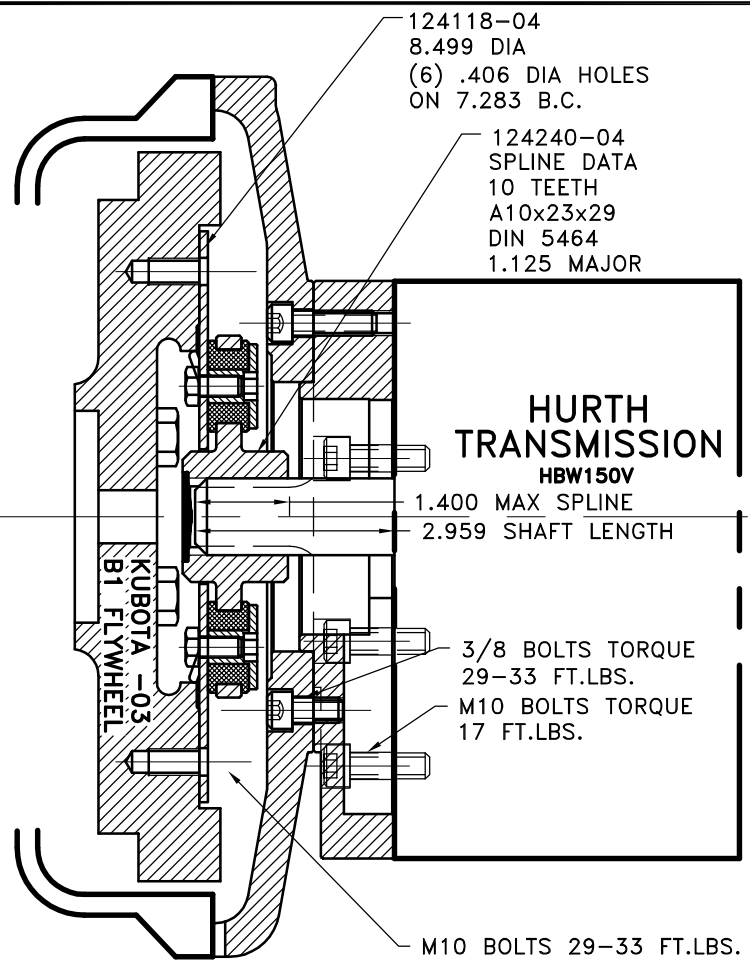
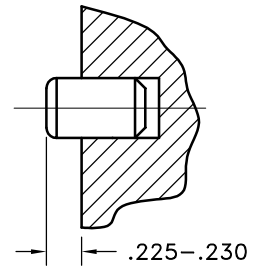


REV	DATE	CHANGE DESCRIPTION	MOD. BY	CK1	CK2
A1	07/19/2006	FIXED DOWEL DEPTH NOTE.	ZS	RJH	HM



NOTE: INSTALL 2 DOWEL PINS



UP TO 50 HP

12	933113	BOLT KIT	1
11	950301	HURTH BOLT KIT	1
10	PURCHASE	M10x20 LG. DOWEL	2
9	125382	ADAPTER PLATE	1
8	933050	HOUSING	1
7	801912	GREASE	1
6	HP-1312-S-62	HUBBARD PLUG	1
5	123729-01	THREADED BUSHING	8
4	HX100	5/16-24x5/8 HHB	8
3	H52500	NEOPRENE INSERT	8
2	124240-04	COUPLING HUB	1
1	124118-04	FLYWHEEL PLATE	1

**COUPLING ASS'Y
#124511**

**ASS'Y WORKS WITH
FLYWHEELS: C-1(16414-25111) &
C-4(19629-25113)
HOUSINGS: D-9(19004-04611) &
D-8(19077-04611)**

- NOTE:**
1. HOUSING FOR KUBOTA ENGINES D1403-B, D1703-B, V1903-B, AND V2203-B.
 2. USE FURNISHED COUPLING GREASE ON BOTH MALE AND FEMALE SPLINE.
 3. DOWEL PIN MUST BE PRESSED IN SO THERE IS ONLY .230-.225 OF DOWEL STICKING OUT OF HOUSING.

THIS DRAWING IS THE PROPERTY OF HAYES MFG. INC. AND IS LOANED SUBJECT TO THE CONDITION THAT IT SHALL NOT BE REPRODUCED, COPIED, LOANED OR OTHERWISE DISPOSED OF, DIRECTLY OR INDIRECTLY. IT SHALL BE USED AS A MEANS OF REFERENCE TO WORK FURNISHED BY THIS COMPANY ONLY AND IS NOT TO BE SUBMITTED TO OUTSIDE PARTIES FOR EXAMINATION WITHOUT OUR CONSENT.

SYMBOLS		DET.	PART NUMBER	DESCRIPTION	QTY.
	FLATNESS	DO NOT SCALE			
	STRAIGHTNESS	DRAWING			
	ANGULARITY	TOLERANCES UNLESS OTHERWISE SPECIFIED			
	PERPENDICULARITY	125 MAXIMUM			
	PARALLELISM	ANGLE ±1/2°			
	CONCENTRICITY	FRACTION ±1/32			
	TRUE POSITION	DECIMAL			
	ROUNDNESS	.00 ±.01			
	CIRCULAR RUN OUT	.000 ±.005			
	TOTAL RUN OUT	.0000 ±.0005			
	CYLINDRICITY				
	FINISH				
CLASS		MAKE: <input type="checkbox"/>	BUY: <input type="checkbox"/>	DRAWN BY: HAVEMAN DATE: 3-18-99	
DESCRIPTION		CHECKED BY:		DRAWING NO. 933046 SHEET OF REV.	

HAYES
MANUFACTURING INC. ®

TITLE
KUBOTA -03 HOUSING & COUPLING ASS'Y

MATERIAL