

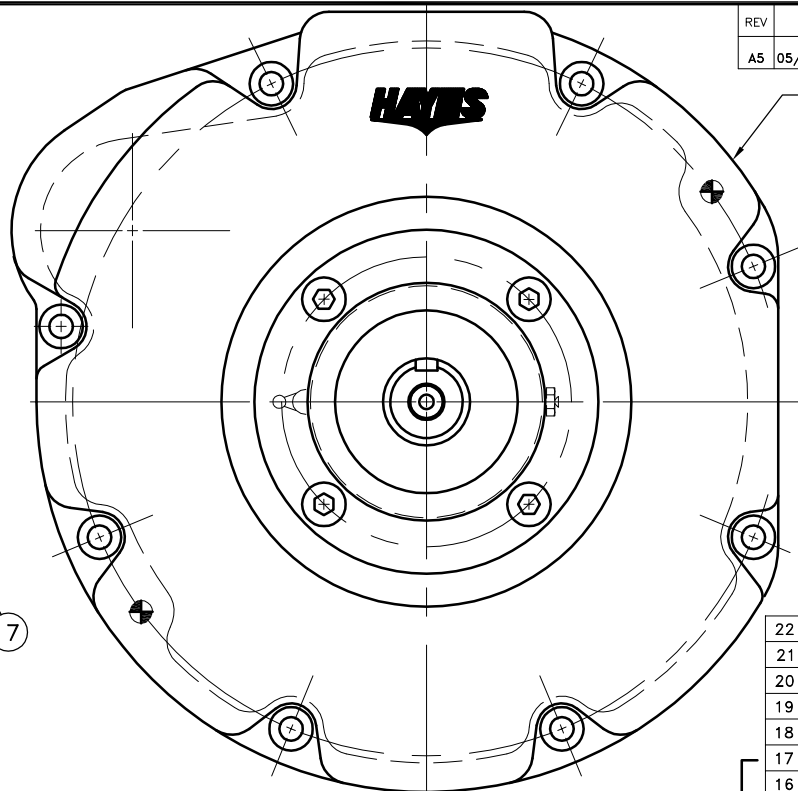
NOTE:
THIS ASSEMBLY WORKS WITH
FLYWHEELS: C-1(16414-25111) &
C-4(19629-25113)
HOUSINGS: D-9(19004-04611)
D-8(19077-04611)

ASSEMBLY NOTE:

ENSURE THAT THE GREASE ZERK
AND RELIEF VALVE ARE LOCATED
HORIZONTAL WHEN MOUNTING ON TO
PUMP MOUNT PLATE OR HOUSING.

NOTES:

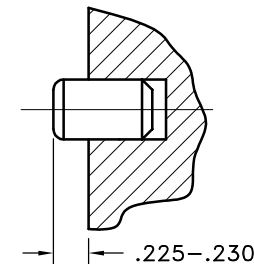
1. LIGHTLY GREASE INTERNAL AND EXTERNAL AREA OF SPLINE AT ASSEMBLY USING SUPPLIED COUPLING GREASE (OVER GREASING COULD CAUSE A HYDRAULIC TYPE LIFT ON SEALS).
2. **AT ASSEMBLY GREASE BEARING HOUSING UNTIL PIN EXTENDS FROM PRESSURE RELIEF VALVE (LOCATED 180° FROM GREASE ZERK).** USE OF AN UNLEADED EXTREME PRESSURE LITHIUM GREASE, WITH NLGI NO.2 GRADE IS RECOMMENDED. RUN TIME BETWEEN GREASINGS NOT TO EXCEED 2,000 HOURS.
3. **WARNING!!!** INJURY OR DEATH FROM A ROTATING STUB SHAFT CAN OCCUR IF A CONDITION EXISTS WHICH WOULD CAUSE THE SHAFT TO BREAK OR COME APART FROM ANY PART OF THE ASSEMBLY. DEPENDING UPON THE APPLICATION (FOR EXAMPLE, FAN, PULLEY, SHEAVE, ETC.), THE AREA AROUND THE STUB SHAFT MUST BE SUFFICIENTLY GUARDED SO THAT IN THE EVENT OF FAILURE, THE GUARD WILL CONTAIN ANY AIRBORNE PARTS.
4. HOUSING FOR KUBOTA ENGINES D1403-B, D1703-B, V1903-B, AND V2203-B.
5. DOWEL PIN MUST BE PRESSED IN SO THERE IS ONLY .225-.230 OF DOWEL STICKING OUT OF HOUSING.



REV	DATE	CHANGE DESCRIPTION	MOD.BY	CK1	CK2
A5	05/12/2011	CHANGED FW PLATE DESC.	ZS	RJH	JM

933041-01
4.00 BORE

NOTE: INSTALL 2 DOWEL PINS



REF: REPLACES 920065

22	VS-032	V-RING	1
21	933113	BOLT KIT (PRE-ASSEMBLED)	1
20	DOWEL	SD200x10x20 DOWEL PIN	2
19	933041-01	HOUSING	1
18	BOLT	1/2-13x1-1/8 SHCS D	4
17	609000	GREASE ZERK	1
16	125294	5/8-18 HHB	1
15	1093K11	RELIEF VALVE	1
14	125007	BEARING HOUSING	1
13	126102	SPLINED SHAFT [14-12/24]	1
12	15830	SEAL	1
11	RR-314	SNAP RING	1
10	600000	GREASE ZERK	1
9	5208WD	DOUBLE BEARING	1
8	208P	BEARING	1
7	801912	GREASE	1
6	R-0017-01	HUBBARD PLUG	1
5	BOLT	5/16-24x5/8 HHB Y D	8
4	123729-01	THREADED BUSHING	8
3	H52500	NEOPRENE INSERT	8
2	125028	COUPLING HUB [14-12/24\3.875]	1
1	124118-04	FLYWHEEL PLATE [SPEC.\3.875]	1

SUB-ASS'Y #126103

COUPLING ASS'Y #125029

SYMBOLS	DET.	PART NUMBER	DESCRIPTION	QTY.
FLATNESS STRAIGHTNESS ANGULARITY PERPENDICULARITY PARALLELISM CONCENTRICITY TRUE POSITION ROUNDNESS CIRCULAR RUN OUT TOTAL RUN OUT CYLINDRICITY FINISH	DO NOT SCALE DRAWING TOLERANCES UNLESS OTHERWISE SPECIFIED .125 MAXIMUM ANGLE ±1/2° FRACTION ±1/32 DECIMAL .00 ±.01 .000 ±.005 .0000 ±.0005	MAKE: <input type="checkbox"/> BUY: <input type="checkbox"/>	HAYES MANUFACTURING INC. ® TITLE KUBOTA -03 BEARING SUPPORTED STUB SHAFT ASS'Y MATERIAL	
CLASS	DESCRIPTION	DRAWN BY LAWSON	DATE 11-15-00	DRAWING NO. 933083
		CHECKED BY RJH	SCALE	SHEET OF REV.

THIS DRAWING IS THE PROPERTY OF HAYES MFG. INC. AND IS LOANED SUBJECT TO THE CONDITION THAT IT SHALL NOT BE REPRODUCED, COPIED, LOANED OR OTHERWISE DISPOSED OF, DIRECTLY OR INDIRECTLY. IT SHALL BE USED AS A MEANS OF REFERENCE TO WORK FURNISHED BY THIS COMPANY ONLY AND IS NOT TO BE SUBMITTED TO OUTSIDE PARTIES FOR EXAMINATION WITHOUT OUR CONSENT.