

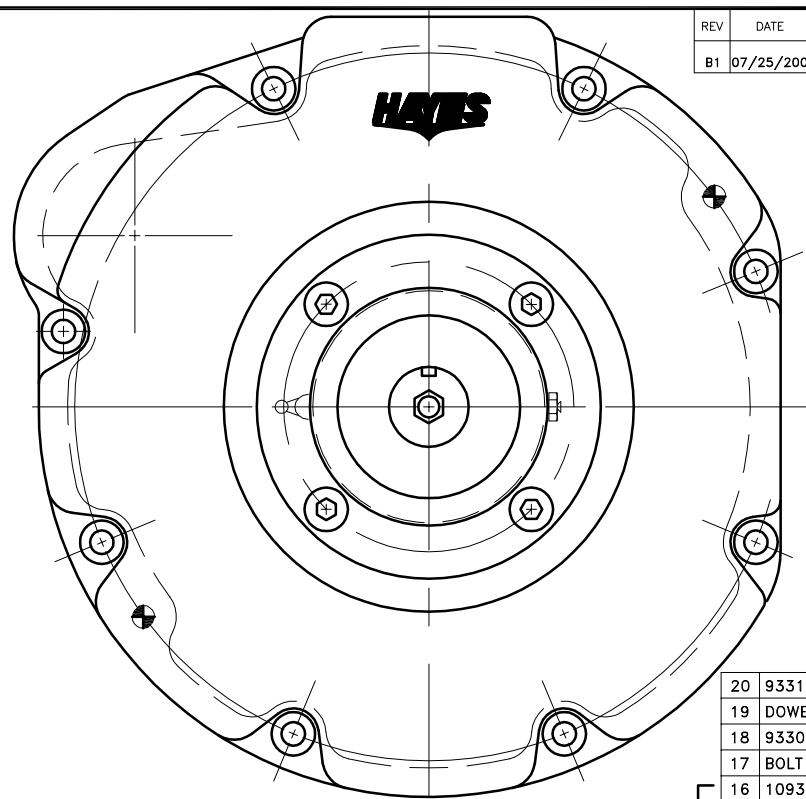
NOTE:
THIS ASSEMBLY WORKS WITH
FLYWHEELS: C-1(16414-25111) &
C-4(19629-25113)
HOUSINGS: D-9(19004-04611)
D-8(19077-04611)

ASSEMBLY NOTE:

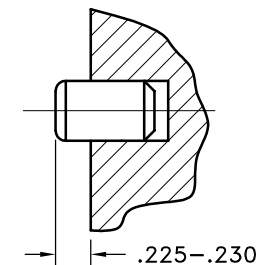
ENSURE THAT THE GREASE ZERT
AND RELIEF VALVE ARE LOCATED
HORIZONTAL WHEN MOUNTING ON
TO PUMP MOUNT PLATE.

NOTES:

1. LIGHTLY GREASE INTERNAL AND EXTERNAL AREA OF SPLINE AT ASSEMBLY USING SUPPLIED COUPLING GREASE (OVER GREASING COULD CAUSE A HYDRAULIC TYPE LIFT ON SEALS).
2. **AT ASSEMBLY GREASE BEARING HOUSING UNTIL PIN EXTENDS FROM PRESSURE RELIEF VALVE (LOCATED 180° FROM GREASE ZERT).** USE OF AN UNLEADED EXTREME PRESSURE LITHIUM GREASE, WITH NLGI NO.2 GRADE IS RECOMMENDED. RUN TIME BETWEEN GREASINGS NOT TO EXCEED 2,000 HOURS.
3. **WARNING!!!** INJURY OR DEATH FROM A ROTATING STUB SHAFT CAN OCCUR IF A CONDITION EXISTS WHICH WOULD CAUSE THE SHAFT TO BREAK OR COME APART FROM ANY PART OF THE ASSEMBLY. DEPENDING UPON THE APPLICATION (FOR EXAMPLE, FAN, PULLEY, SHEAVE, ETC.), THE AREA AROUND THE STUB SHAFT MUST BE SUFFICIENTLY GUARDED SO THAT IN THE EVENT OF FAILURE, THE GUARD WILL CONTAIN ANY AIRBORNE PARTS.
4. HOUSING FOR KUBOTA ENGINES D1403-B, D1703-B, V1903-B, AND V2203-B.
5. DOWEL PIN MUST BE PRESSED IN SO THERE IS ONLY .225-.230 OF DOWEL IS STICKING OUT OF HOUSING.



NOTE: INSTALL 2 DOWEL PINS



SUB-ASS'Y #126088

SUB-ASS'Y #125029

20	933113	BOLT KIT	1
19	DOWEL	SD200x10x20 DOWEL PIN	2
18	933041-01	HOUSING	1
17	BOLT	1/2-13x1-1/8 SHCS D	4
16	1093K11	RELIEF VALVE	1
15	125007	BEARING HOUSING	1
14	126087	SHAFT	1
13	15830	SEAL	1
12	RR-314	SNAP RING	1
11	600000	GREASE ZERT	1
10	5208WD	DOUBLE BEARING	1
9	208P	BEARING	1
8	VS-032	V-RING	1
7	801912	GREASE	1
6	R-0017-01	HUBBARD PLUG	1
5	BOLT	5/16-24x5/8 HHB Y D	8
4	123729-01	THREADED BUSHING	8
3	H52500	NEOPRENE INSERT	8
2	125028	COUPLING HUB	1
1	124118-04	FLYWHEEL PLATE	1

SYMBOLS	DET.	PART NUMBER	DESCRIPTION	QTY.
FLATNESS STRAIGHTNESS ANGULARITY PERPENDICULARITY PARALLELISM CONCENTRICITY TRUE POSITION ROUNDNESS CIRCULAR RUN OUT TOTAL RUN OUT CYLINDRICITY FINISH	DO NOT SCALE DRAWING TOLERANCES UNLESS OTHERWISE SPECIFIED .125/ MAXIMUM ANGLE ±1/2° FRACTION ±1/32 DECIMAL .00 ±.01 .000 ±.005 .0000 ±.0005	MAKE: <input type="checkbox"/> BUY: <input type="checkbox"/>	HAYES MANUFACTURING INC. ® TITLE KUBOTA -03 BEARING SUPPORTED STUB SHAFT ASS'Y MATERIAL	
CLASS	DESCRIPTION	DRAWN BY LAWSON	DATE 1-24-02	DRAWING NO. 933119
		CHECKED BY	SCALE	SHEET OF REV.

THIS DRAWING IS THE PROPERTY OF HAYES MFG. INC. AND IS LOANED SUBJECT TO THE CONDITION THAT IT SHALL NOT BE REPRODUCED, COPIED, LOANED OR OTHERWISE DISPOSED OF, DIRECTLY OR INDIRECTLY. IT SHALL BE USED AS A MEANS OF REFERENCE TO WORK FURNISHED BY THIS COMPANY ONLY AND IS NOT TO BE SUBMITTED TO OUTSIDE PARTIES FOR EXAMINATION WITHOUT OUR CONSENT.