

**NOTE:**  
THIS ASSEMBLY WORKS WITH  
FLYWHEELS: C-1(16414-25111) &  
C-4(19629-25113)  
HOUSINGS: D-9(19004-04611)  
D-8(19077-04611)

**ASSEMBLY NOTE:**

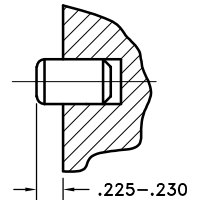
ENSURE THAT THE GREASE ZERT  
AND RELIEF VALVE ARE LOCATED  
HORIZONTAL WHEN MOUNTING ON  
TO PUMP MOUNT PLATE.

**NOTES:**

1. LIGHTLY GREASE INTERNAL AND EXTERNAL AREA OF SPLINE AT ASSEMBLY USING SUPPLIED COUPLING GREASE (OVER GREASING COULD CAUSE A HYDRAULIC TYPE LIFT ON SEALS).
2. **AT ASSEMBLY GREASE BEARING HOUSING UNTIL PIN EXTENDS FROM PRESSURE RELIEF VALVE (LOCATED 180° FROM GREASE ZERK).** USE OF AN UNLEADED EXTREME PRESSURE LITHIUM GREASE, WITH NLGI NO.2 GRADE IS RECOMMENDED. RUN TIME BETWEEN GREASINGS NOT TO EXCEED 2,000 HOURS.
3. **WARNING!!!** INJURY OR DEATH FROM A ROTATING STUB SHAFT CAN OCCUR IF A CONDITION EXISTS WHICH WOULD CAUSE THE SHAFT TO BREAK OR COME APART FROM ANY PART OF THE ASSEMBLY. DEPENDING UPON THE APPLICATION (FOR EXAMPLE, FAN, PULLEY, SHEAVE, ETC.), THE AREA AROUND THE STUB SHAFT MUST BE SUFFICIENTLY GUARDED SO THAT IN THE EVENT OF FAILURE, THE GUARD WILL CONTAIN ANY AIRBORNE PARTS.
4. HOUSING FOR KUBOTA ENGINES D1403-B, D1703-B, V1903-B, AND V2203-B.
5. DOWEL PIN MUST BE PRESSED IN SO THERE IS ONLY .225-.230 OF DOWEL IS STICKING OUT OF HOUSING.

REV	DATE	CHANGE DESCRIPTION	MOD.BY	CK1	CK2
B	06/07/2016	CHANGED SEAL	BSL		

**NOTE: INSTALL 2 DOWEL PINS**



124118-04  
8.499 DIA  
(6) .406 DIA HOLES  
ON 7.283 B.C.

125028  
SPLINE DATA  
14 TEETH  
12/24 D.P.  
30° P.A.  
1.283 MAJOR  
SAE "C"

**SUB-ASS'Y #127895**

**SUB-ASS'Y #125029**

22	933113	BOLT KIT (PRE-ASSEMBLED)	1
21	DOWEL	SD200x10x20 DOWEL PIN	2
20	933041-01	HOUSING	1
19	BOLT	1/2-13x1-1/8 SHCS D	4
18	1093K11	RELIEF VALVE	1
17	125007	BEARING HOUSING	1
16	609000	GREASE ZERK	1
15	125294	SPECIAL 5/8-11 HHB	1
14	127894	SHAFT	1
13	132015	SEAL	1
12	RR-314	SNAP RING	1
11	600000	GREASE ZERK	1
10	5208WD	DOUBLE BEARING	1
9	208KD	BEARING	1
8	VS-032	V-RING	1
7	801912	GREASE	1
6	R-0017-01	HUBBARD PLUG	1
5	BOLT	5/16-24x5/8 HHB Y D	8
4	123729-01	THREADED BUSHING	8
3	H52500	NEOPRENE INSERT	8
2	125028	COUPLING HUB	1
1	124118-04	FLYWHEEL PLATE	1

SYMBOLS	DET.	PART NUMBER	DESCRIPTION	QTY.
DO NOT SCALE DRAWING TOLERANCES UNLESS OTHERWISE SPECIFIED 125 MAXIMUM ANGLE ±1/2° FRACTION ±1/32 DECIMAL .00 ±.01 .000 ±.005 .0000 ±.0005 FINISH				
CLASS BS ASSY DESCRIPTION KB03,1-7/16,6	MAKE: <input checked="" type="checkbox"/> BUY: <input type="checkbox"/>	DRAWN BY SIETING CHECKED BY JM	DATE 07-28-2014 SCALE	DRAWING NO. <b>933148</b> SHEET OF REV.

**HAYES**  
MANUFACTURING INC. ®

TITLE  
KUBOTA 03 BEARING SUPPORTED STUB SHAFT ASSY

MATERIAL

THIS DRAWING IS THE PROPERTY OF HAYES MFG. INC. AND IS LOANED  
SUBJECT TO THE CONDITION THAT IT SHALL NOT BE REPRODUCED,  
COPIED, LOANED OR OTHERWISE DISPOSED OF, DIRECTLY OR INDIRECTLY.  
IT SHALL BE USED AS A MEANS OF REFERENCE TO WORK FURNISHED BY  
THIS COMPANY ONLY AND IS NOT TO BE SUBMITTED TO OUTSIDE PARTIES  
FOR EXAMINATION WITHOUT OUR CONSENT.