

**YANMAR HOUSING  
171301-01600  
SEMI- SAE #5**

M10x1.5 HHB  
TORQUE 29-33 FT.LBS

M8 x 1.25 HHB  
TORQUE 20-25 FT.LBS.

124243-21  
9.499 O.D.  
(8) .343 HOLES  
ON 8.750 B.C.

**PUMP OR  
MOTOR**  
SEE BOX TO  
POSITION HUB  
ON SHAFT  
NOT TO SCALE

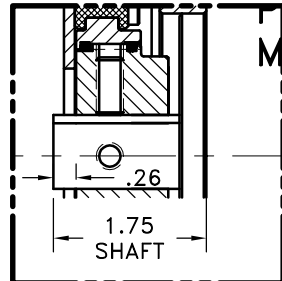
**3/4" SHAFT  
3/16" KEY**

YANMAR FLYWHEEL  
SAE #7-1/2  
119265-21590

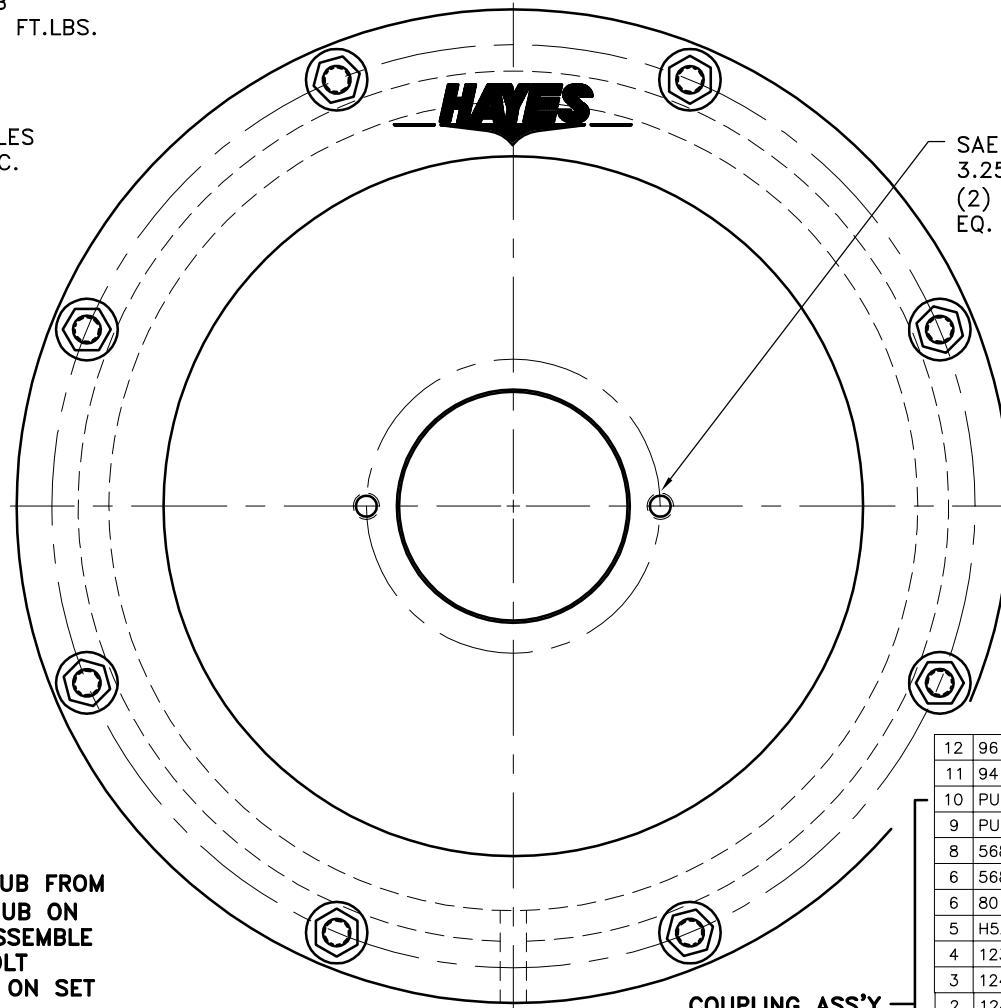
**NOTE: REMOVE HUB FROM  
ASS'Y, PRESET HUB ON  
SHAFT & RE- ASSEMBLE  
USING NUT & BOLT  
GRADE LOC-TITE ON SET  
SCREWS**

.59 [15.0mm]  
1.63 [41.4mm]

3.15 [80.0mm]



THIS DRAWING IS THE PROPERTY OF HAYES MFG. INC. AND IS LOANED  
SUBJECT TO THE CONDITION THAT IT SHALL NOT BE REPRODUCED,  
COPIED, LOANED OR OTHERWISE DISPOSED OF, DIRECTLY OR INDIRECTLY.  
IT SHALL BE USED AS A MEANS OF REFERENCE TO WORK FURNISHED BY  
THIS COMPANY ONLY AND IS NOT TO BE SUBMITTED TO OUTSIDE PARTIES  
FOR EXAMINATION WITHOUT OUR CONSENT.



SAE "A" 2-BOLT MOUNT  
3.25 PUMP PILOT  
(2) 3/8-16 TAPPED HOLES  
EQ. SPACED ON 4.18 B.C.

**UP TO 50 HP**

**COUPLING ASS'Y  
#124764**

12	961457	BOLT KIT	1
11	941905-01	SAE #5 HOUSING	1
10	PURCHASE	5/16-18x3/4 SSSCP	1
9	PURCHASE	5/16-18x5/8 SSSCP	1
8	568-143	O-RING (124282-02)	1
6	568-142	O-RING (124838-07)	1
6	801912	GREASE	1
5	H52500	NEOPRENE INSERT	6
4	123206-01	STEEL RIVET	6
3	124838-07	EXTERNAL SPLINED ADAPTER	1
2	124282-02	INTERNAL SPLINED ADAPTER	1
1	124243-21	FLYWHEEL PLATE	1

SYMBOLS	DET.	PART NUMBER	DESCRIPTION	QTY.
FLATNESS STRAIGHTNESS ANGULARITY SQUARENESS PARALLELISM CONCENTRICITY TRUE POSITION ROUNDNESS CIRCULAR RUN OUT TOTAL RUN OUT CYLINDRICITY FINISH	DO NOT SCALE DRAWING TOLERANCES UNLESS OTHERWISE SPECIFIED ANGLE $\pm 1/2^\circ$ FRACTION $\pm 1/32$ DECIMAL .00 $\pm .01$ .000 $\pm .005$ .0000 $\pm .0005$		 <b>HAYES</b> TM MANUFACTURING INC. TITLE YANMAR 3TNE HOUSING & FLYWHEEL COUPLING ASS'Y MATERIAL	
- UNLESS OTHERWISE SPECIFIED - REMOVE FIRST THREAD ON ALL TAPPED HOLES BREAK ALL SHARP CORNERS .010 TO .020 STAMP OR MARK DRAWING NO.	DRAWN BY MAYCROFT CHECKED BY RJH	DATE 03-30-99 SCALE	DRAWING NO. <b>941918</b> SHEET OF REV.	