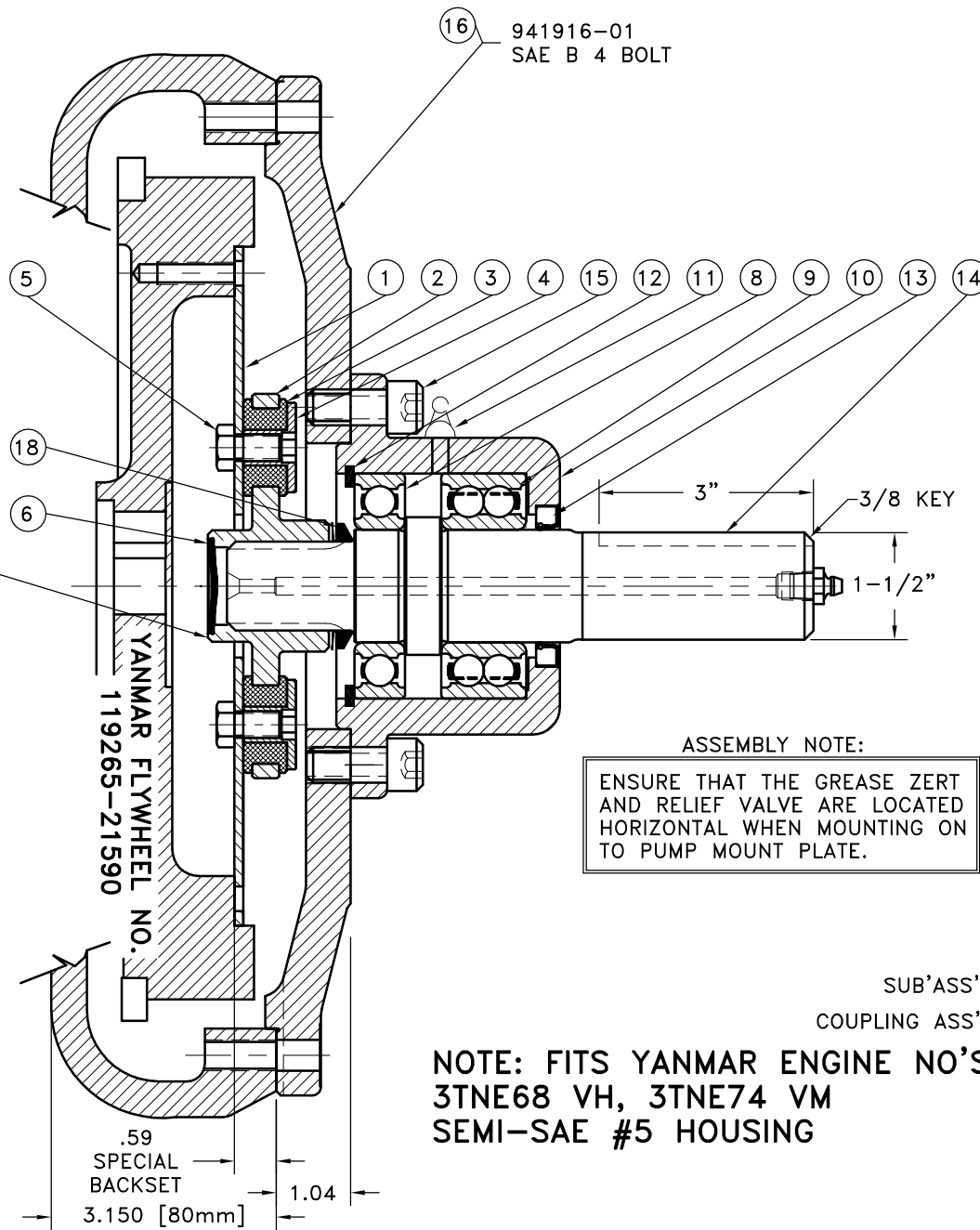


| REV | DATE       | CHANGE DESCRIPTION       | MOD.BY | CK1 | CK2 |
|-----|------------|--------------------------|--------|-----|-----|
| F   | 11/21/2002 | CHANGED V-RING TO VS-032 | ZS     | RJH | HM  |



#### NOTES:

1. LIGHTLY GREASE INTERNAL AND EXTERNAL AREA OF SPLINE AT ASSEMBLY USING 1912 COUPLING GREASE (OVER GREASING COULD CAUSE A HYDRAULIC TYPE LIFT ON SEALS).
2. GREASE BEARING HOUSING UNTIL PIN EXTENDS FROM PRESSURE RELIEF VALVE (LOCATED 180° FROM GREASE ZERT). USE OF AN UNLEADED EXTREME PRESSURE LITHIUM GREASE, WITH NLGI NO.2 GRADE IS RECOMMENDED. RUN TIME BETWEEN GREASINGS NOT TO EXCEED 2,000 HOURS.
3. **WARNING!!!** INJURY OR DEATH FROM A ROTATING STUB SHAFT CAN OCCUR IF A CONDITION EXISTS WHICH WOULD CAUSE THE SHAFT TO BREAK OR COME APART FROM ANY PART OF THE ASSEMBLY. DEPENDING UPON THE APPLICATION (FOR EXAMPLE, FAN, PULLEY, SHEAVE, ETC.), THE AREA AROUND THE STUB SHAFT MUST BE SUFFICIENTLY GUARDED SO THAT IN THE EVENT OF FAILURE, THE GUARD WILL CONTAIN ANY AIRBORNE PARTS.

#### ASSEMBLY NOTE:

ENSURE THAT THE GREASE ZERT AND RELIEF VALVE ARE LOCATED HORIZONTAL WHEN MOUNTING ON TO PUMP MOUNT PLATE.

SUB'ASS'Y #126088

COUPLING ASS'Y #125052

NOTE: FITS YANMAR ENGINE NO'S  
3TNE68 VH, 3TNE74 VM  
SEMI-SAE #5 HOUSING

#### REPLACES 941896

|    |           |                          |   |
|----|-----------|--------------------------|---|
| 18 | VS-032    | V-RING                   | 1 |
| 17 | 961457    | BOLT KIT (PRE-ASSEMBLED) | 1 |
| 16 | 941916-01 | HOUSING [B4]             | 1 |
| 15 | BOLT      | 1/2-13x1-1/8 SHCS D      | 4 |
| 14 | 126087    | SPLINED SHAFT [1-1/2,3]  | 1 |
| 13 | 15830     | SEAL                     | 1 |
| 12 | RR-314    | SNAP RING                | 1 |
| 11 | 600000    | GREASE ZERT              | 1 |
| 10 | 125007    | BEARING HOUSING          | 1 |
| 9  | 5208WD    | DOUBLE BEARING           | 1 |
| 8  | 208P      | BEARING                  | 1 |
| 7  | 801912    | GREASE                   | 1 |
| 6  | R-0017-01 | HUBBARD PLUG             | 1 |
| 5  | BOLT      | 5/16-24x5/8 HHB Y D      | 8 |
| 4  | 123729-01 | THREADED BUSHING         | 8 |
| 3  | H52500    | NEOPRENE INSERT          | 8 |
| 2  | 125008    | COUPLING HUB [14T 12/24] | 1 |
| 1  | 123243-97 | FLYWHEEL PLATE           | 1 |

| SYMBOLS  | DET.  | PART NUMBER                              | DESCRIPTION              | QTY.                                   |
|--|---|--|--------------------------|--|
| DO NOT SCALE DRAWING<br>TOLERANCES UNLESS OTHERWISE SPECIFIED<br>125 MAXIMUM<br>ANGLE ±1/2°<br>FRACTION ±1/32<br>DECIMAL<br>.00 ±.01<br>.000 ±.005<br>.0000 ±.0005 |   |  |                          |  |
| CLASS<br>BS ASSY<br>DESCRIPTION<br>YNM3TN,14T12/24,B4  | MAKE: <input checked="" type="checkbox"/> BUY: <input type="checkbox"/> | DRAWN BY<br>HAVEMAN<br>CHECKED BY<br>RJH | DATE<br>8-10-00<br>SCALE | DRAWING NO.<br>941925<br>SHEET OF REV. |

SEMI-SAE#5 YANMAR HOUSING 171301-01600

THIS DRAWING IS THE PROPERTY OF HAYES MFG. INC. AND IS LOANED SUBJECT TO THE CONDITION THAT IT SHALL NOT BE REPRODUCED, COPIED, LOANED OR OTHERWISE DISPOSED OF, DIRECTLY OR INDIRECTLY. IT SHALL BE USED AS A MEANS OF REFERENCE TO WORK FURNISHED BY THIS COMPANY ONLY AND IS NOT TO BE SUBMITTED TO OUTSIDE PARTIES FOR EXAMINATION WITHOUT OUR CONSENT.