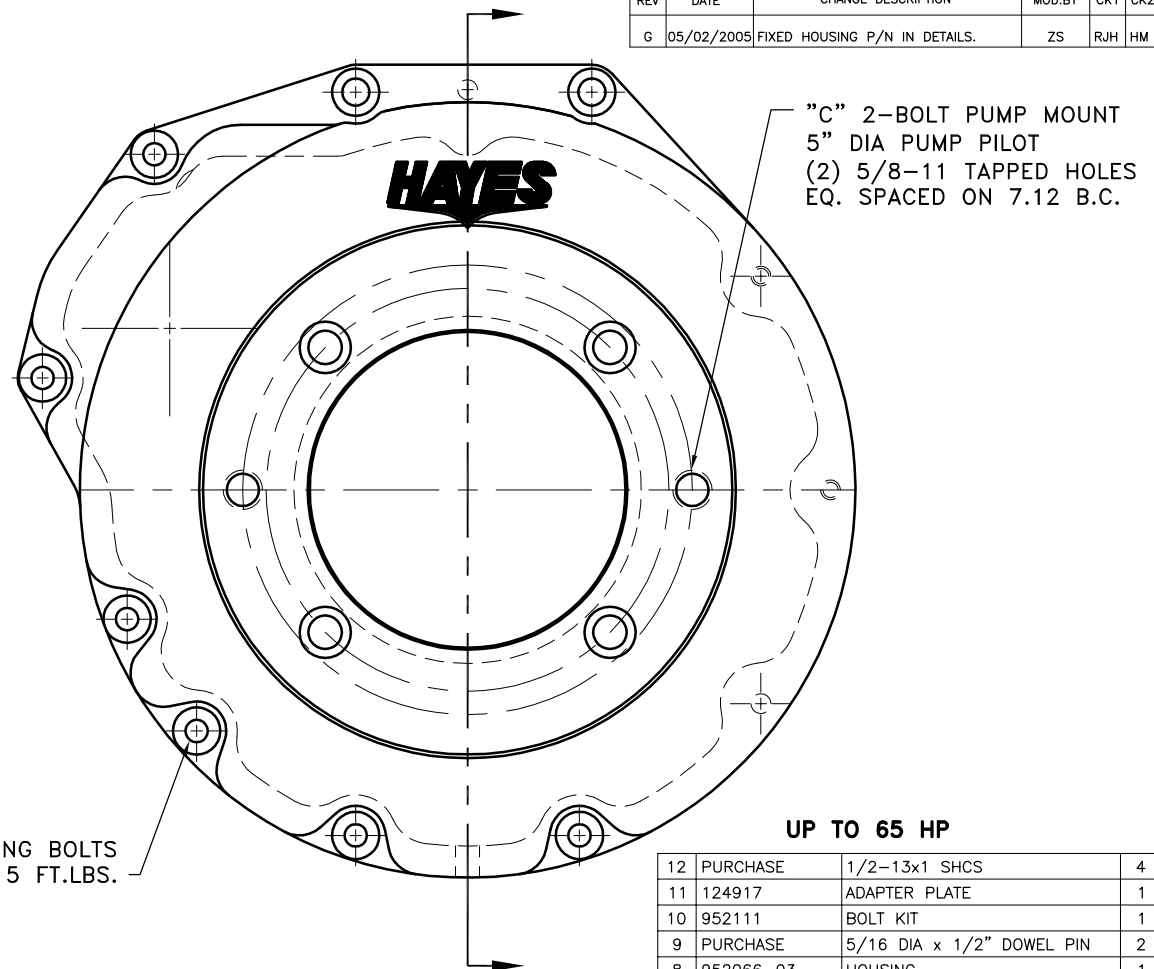
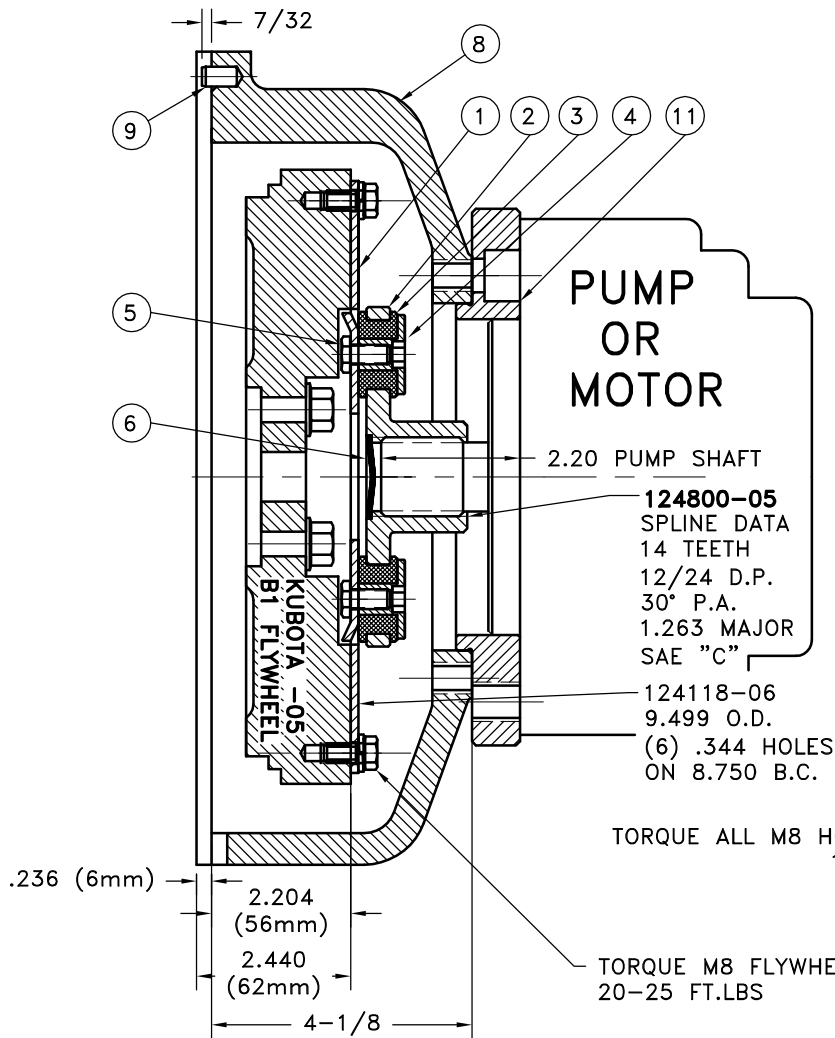


REV	DATE	CHANGE DESCRIPTION	MOD.BY	CK1	CK2
G	05/02/2005	FIXED HOUSING P/N IN DETAILS.	ZS	RJH	HM



COUPLING ASS'Y
#124729

12	PURCHASE	1/2-13x1 SHCS	4
11	124917	ADAPTER PLATE	1
10	952111	BOLT KIT	1
9	PURCHASE	5/16 DIA x 1/2" DOWEL PIN	2
8	952066-03	HOUSING	1
7	801912	GREASE	1
6	HP-1312-S-62	HUBBARD PLUG	1
5	HX300	5/16-24 x 5/8" HHB	8
4	123729-01	THREADED BUSHING	8
3	H52500	NEOPRENE INSERT	8
2	124800-05	COUPLING HUB	1
1	124118-06	FLYWHEEL PLATE	1

NOTES:

1. HOUSING FOR KUBOTA ENGINES D-905, D1005-B, D1105-B, V1205-B, V1305-P, AND V1505-B

2. USE FURNISHED COUPLING GREASE ON BOTH MALE AND FEMALE SPLINE.

THIS DRAWING IS THE PROPERTY OF HAYES MFG. INC. AND IS LOANED SUBJECT TO THE CONDITION THAT IT SHALL NOT BE REPRODUCED, COPIED, LOANED OR OTHERWISE DISPOSED OF, DIRECTLY OR INDIRECTLY. IT SHALL BE USED AS A MEANS OF REFERENCE TO WORK FURNISHED BY THIS COMPANY ONLY AND IS NOT TO BE SUBMITTED TO OUTSIDE PARTIES FOR EXAMINATION WITHOUT OUR CONSENT.

SYMBOLS	DET.	PART NUMBER	DESCRIPTION	QTY.
<div style="display: flex; flex-direction: column; gap: 5px;"> <div>— FLATNESS</div> <div>— STRAIGHTNESS</div> <div>— ANGULARITY</div> <div>— SQUARENESS</div> <div>— PARALLELISM</div> <div>— CONCENTRICITY</div> <div>— TRUE POSITION</div> <div>— ROUNDNESS</div> <div>— CIRCULAR RUN OUT</div> <div>— TOTAL RUN OUT</div> <div>— CYLINDRICITY</div> <div>— FINISH</div> </div>	DO NOT SCALE DRAWING TOLERANCES UNLESS OTHERWISE SPECIFIED 1/32" MAXIMUM ANGLE ±1/2° FRACTION ±1/32 DECIMAL .00 ±.01 .000 ±.005 .0000 ±.0005		<div style="text-align: center;"> <p>HAYES MANUFACTURING INC. ®</p> </div>	
TITLE KUBOTA -05 HOUSING & COUPLING ASSY				
MATERIAL				
- UNLESS OTHERWISE SPECIFIED - REMOVE FIRST THREAD ON ALL TAPPED HOLES BREAK ALL SHARP CORNERS .010 TO .020 STAMP OR MARK DRAWING NO.		DRAWN BY HAVEMAN	DATE 1-30-98	DRAWING NO. 952081
		CHECKED BY RJH	SCALE	SHEET OF REV.