

REV	DATE	CHANGE DESCRIPTION	MOD.BY	CK1	CK2
A1	09/19/2006	REMOVED D902 ENGINE	ZS	RJH	HM

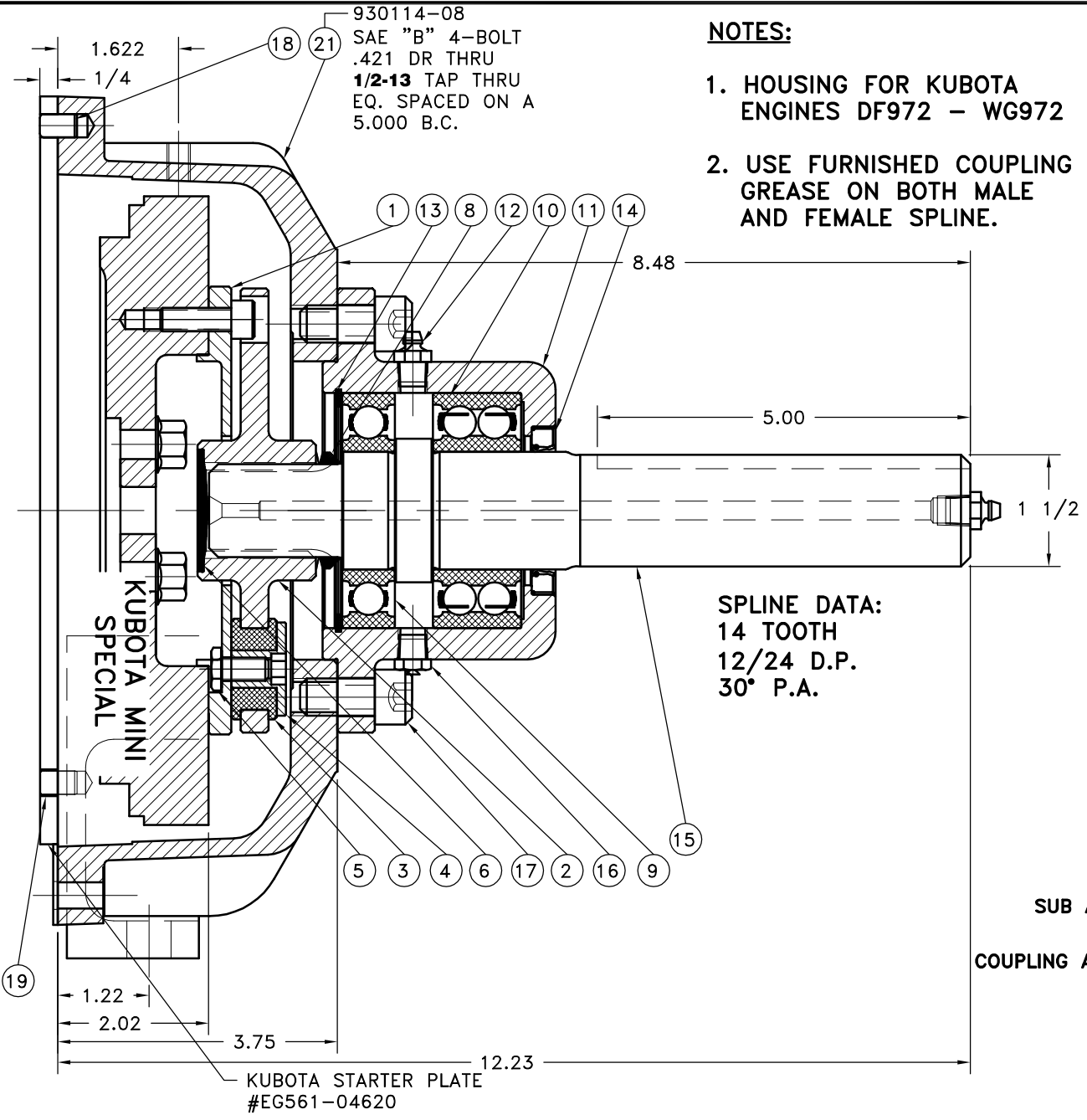
SPECIAL FOR DF972 - WG972

NOTES:

1. HOUSING FOR KUBOTA ENGINES DF972 - WG972
2. USE FURNISHED COUPLING GREASE ON BOTH MALE AND FEMALE SPLINE.

NOTES:

1. LIGHTLY GREASE INTERNAL AND EXTERNAL AREA OF SPLINE AT ASSEMBLY USING COUPLING GREASE (OVER GREASING COULD CAUSE A HYDRAULIC TYPE LIFT ON SEALS). GREASE BEARING HOUSING UNTIL PIN EXTENDS FROM PRESSURE RELIEF VALVE (LOCATED 180° FROM GREASE ZERT).
2. USE OF AN UNLEADED EXTREME PRESSURE LITHIUM GREASE, WITH NLGI NO.2 GRADE IS RECOMMENDED. RUN TIME BETWEEN GREASINGS NOT TO EXCEED 2,000 HOURS.
3. **WARNING!!!** INJURY OR DEATH FROM A ROTATING STUB SHAFT CAN OCCUR IF A CONDITION EXISTS WHICH WOULD CAUSE THE SHAFT TO BREAK OR COME APART FROM ANY PART OF THE ASSEMBLY. DEPENDING UPON THE APPLICATION (FOR EXAMPLE, FAN, PULLEY, SHEAVE, ETC.), THE AREA AROUND THE STUB SHAFT MUST BE SUFFICIENTLY GUARDED SO THAT IN THE EVENT OF FAILURE, THE GUARD WILL CONTAIN ANY AIRBORNE PARTS.



SPLINE DATA:
 14 TOOTH
 12/24 D.P.
 30° P.A.

QTY.	PART NUMBER	DESCRIPTION
1	930114-08	HOUSING
1	972005	BOLT KIT (PRE-ASSEMBLED)
1	127695	HOLLOW DOWEL BUSHING
2	18	DOWEL SD200x5/16x1/2 DOWEL PIN
4	17	BOLT 1/2-13x1 SHCS
1	16	1093K11 RELIEF VALVE
1	15	125710 SPLINED SHAFT
1	14	15830 SEAL
1	13	RR-314 SNAP RING
2	12	600000 GREASE ZERT
1	11	125007 BEARING HOUSING
1	10	5208WD DOUBLE BEARING
1	9	208P BEARING
1	8	VS-032 V-RING
1	7	801912 GREASE
1	6	R-0017-02 GREASE PLUG
5	5	HX300 SPEC. 5/16-24x5/8 HHB Y D
5	4	123729-01 THREADED BUSHING
5	3	H52500 NEOPRENE INSERT
1	2	127773 COUP HUB [14T 16/32\4.125]
1	1	127623 FLYWHEEL PLATE

SUB ASS'Y #125711

COUPLING ASS'Y #127772

SYMBOLS	DET.	PART NUMBER	DESCRIPTION	QTY.
▨ FLATNESS ▨ STRAIGHTNESS ▨ ANGULARITY ⊥ PERPENDICULARITY ∥ PARALLELISM ⊙ CONCENTRICITY ⊕ TRUE POSITION ○ ROUNDNESS Ⓢ CIRCULAR RUN OUT Ⓣ TOTAL RUN OUT Ⓢ CYLINDRICITY ▨ FINISH	DO NOT SCALE DRAWING TOLERANCES UNLESS OTHERWISE SPECIFIED 125 MAXIMUM ANGLE ±1/2° FRACTION ±1/32 DECIMAL .00 ±.01 .000 ±.005 .0000 ±.0005			
CLASS	MAKE: <input type="checkbox"/> BUY: <input type="checkbox"/>	DRAWN BY	DATE	DRAWING NO.
DESCRIPTION		SIETING	11-17-04	972015
		CHECKED BY	SCALE	SHEET OF REV.
		RJH		972015

THIS DRAWING IS THE PROPERTY OF HAYES MFG. INC. AND IS LOANED SUBJECT TO THE CONDITION THAT IT SHALL NOT BE REPRODUCED, COPIED, LOANED OR OTHERWISE DISPOSED OF, DIRECTLY OR INDIRECTLY. IT SHALL BE USED AS A MEANS OF REFERENCE TO WORK FURNISHED BY THIS COMPANY ONLY AND IS NOT TO BE SUBMITTED TO OUTSIDE PARTIES FOR EXAMINATION WITHOUT OUR CONSENT.