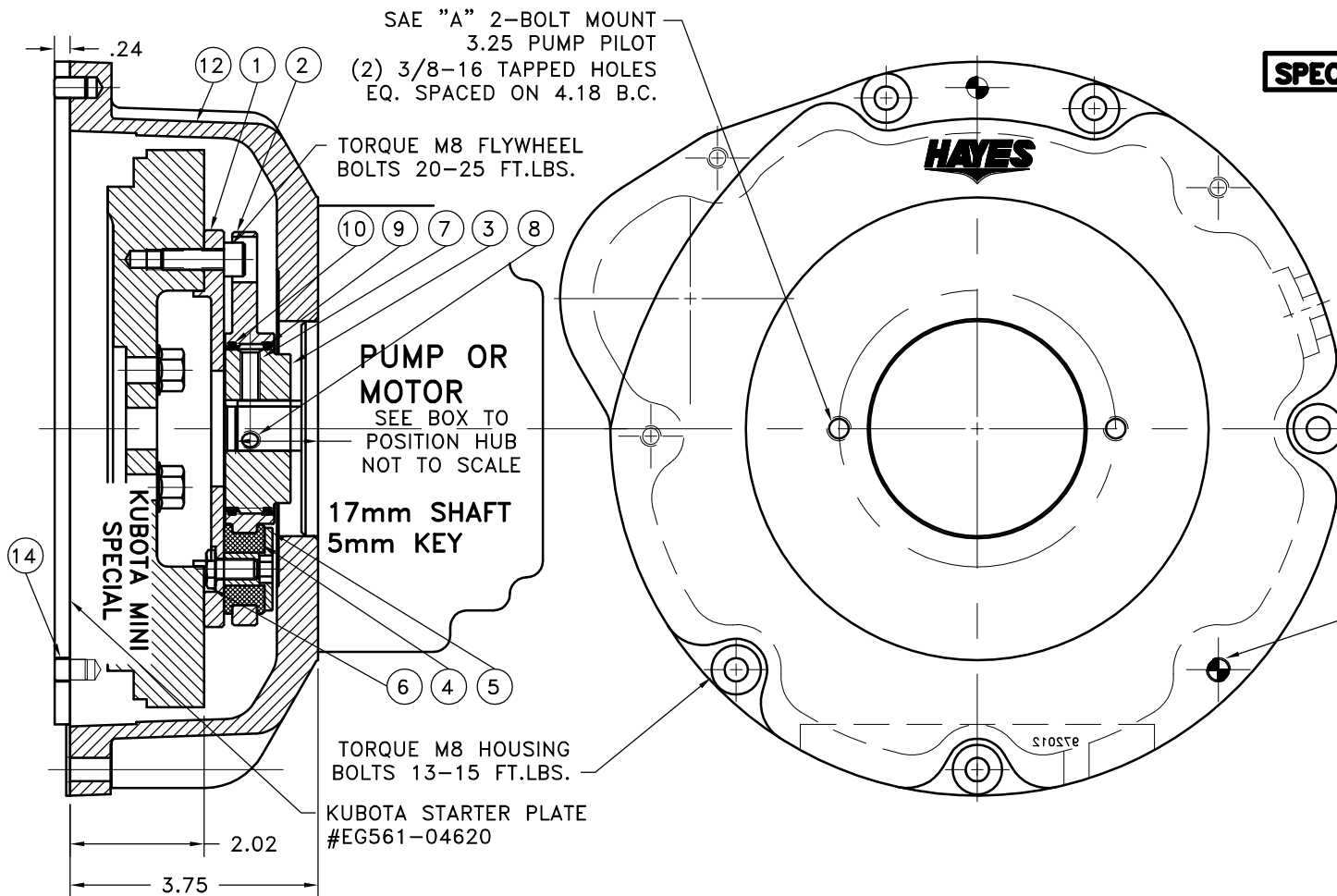


REV	DATE	CHANGE DESCRIPTION	MOD.BY	CK1	CK2

SPECIAL FOR DF972 - WG972 - D902



NOTES:

1. HOUSING FOR KUBOTA ENGINES DF972 - WG972 - D902
2. USE FURNISHED COUPLING GREASE ON BOTH MALE AND FEMALE SPLINE.

LOC-TITE DOWEL BUSHING ON PINS AT ASSEMBLY

15	972005	BOLT KIT	1
14	127695	HOLLOW DOWEL BUSHING	1
13	PURCHASE	5/16 DIA x 1/2 DOWEL PIN	2
12	930100-01	HOUSING	1
11	801912	GREASE	1
10	568-143	O-RING (124283)	1
9	568-142	O-RING (124838-56)	1
8	PURCHASE	5/16-18 x 3/4" SSSCP	1
7	PURCHASE	5/16-18 x 5/8" SSSCP	1
6	HX300	SPEC. 5/16-24 x 5/8" HHB	5
5	123729-01	THREADED BUSHING	5
4	H52500	NEOPRENE INSERT	5
3	124838-56	EXTERNAL SPLINED ADAPTER	1
2	124283	INTERNAL SPLINED HUB	1
1	127623	FLYWHEEL PLATE	1

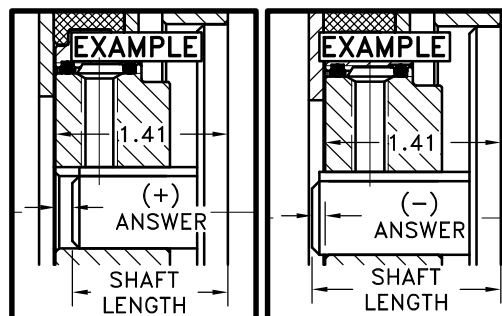
**COUPLING ASS'Y
#127937**

NOTE: REMOVE HUB FROM ASS'Y, PRESET HUB ON SHAFT & REASSEMBLE USING NUT & BOLT GRADE LOC-TITE ON SET SCREWS. SHAFT SHOULD HAVE A MINIMUM OF 3/4" OF ENGAGEMENT IF NOT CONTACT FACTORY FOR RECOMMENDATIONS. TO GET HUB PRESET USE THIS EQUATION:

EXAMPLE:
1.41 - SHAFT LENGTH = HUB PRESET

IF YOUR ANSWER IS (+) SHAFT IS INSIDE OF HUB, IF YOUR ANSWER IS (-) SHAFT STICKS OUT OF HUB. (SEE BOXES)

NOTE: THIS STEP IS IMPORTANT TO ENSURE FULL SPLINE ENGAGEMENT.



SYMBOLS	DET.	PART NUMBER	DESCRIPTION	QTY.
FLATNESS STRAIGHTNESS ANGULARITY SQUARENESS PARALLELISM CONCENTRICITY TRUE POSITION ROUNDNESS CIRCULAR RUN OUT TOTAL RUN OUT CYLINDRICITY FINISH	DO NOT SCALE DRAWING TOLERANCES UNLESS OTHERWISE SPECIFIED DECIMAL MAXIMUM ANGLE $\pm 1/2^\circ$ FRACTION $\pm 1/32$ DECIMAL .00 \pm .01 .000 \pm .005 .0000 \pm .0005		HAYES MANUFACTURING INC. ® TITLE KUBOTA MINI SERIES HOUSING & FLYWHEEL COUPLING ASS'Y MATERIAL	
- UNLESS OTHERWISE SPECIFIED - REMOVE FIRST THREAD ON ALL TAPPED HOLES BREAK ALL SHARP CORNERS .010 TO .020 STAMP OR MARK DRAWING NO.	DRAWN BY SIETING CHECKED BY RJH	DATE 07-14-05 SCALE	DRAWING NO. 972019 SHEET OF REV.	