

REV	DATE	CHANGE DESCRIPTION	MOD.BY	CK1	CK2
B	06/09/2016	CHANGED SEAL	BSL	JM	HM

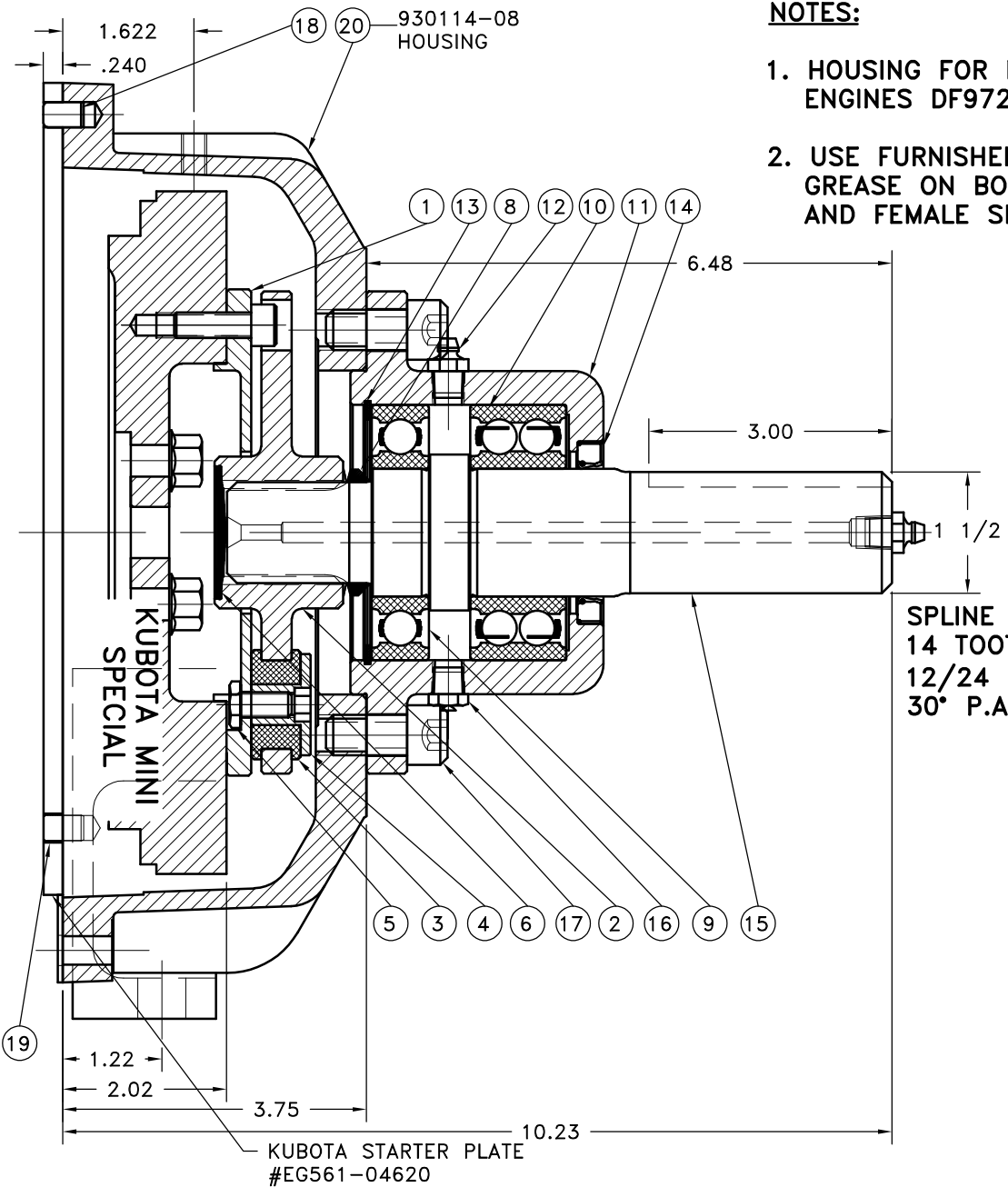
SPECIAL FOR DF972 - WG972

NOTES:

1. HOUSING FOR KUBOTA ENGINES DF972 - WG972
2. USE FURNISHED COUPLING GREASE ON BOTH MALE AND FEMALE SPLINE.

NOTES:

1. LIGHTLY GREASE INTERNAL AND EXTERNAL AREA OF SPLINE AT ASSEMBLY USING COUPLING GREASE (OVER GREASING COULD CAUSE A HYDRAULIC TYPE LIFT ON SEALS). GREASE BEARING HOUSING UNTIL PIN EXTENDS FROM PRESSURE RELIEF VALVE (LOCATED 180° FROM GREASE ZERK).
2. USE OF AN UNLEADED EXTREME PRESSURE LITHIUM GREASE, WITH NLGI NO.2 GRADE IS RECOMMENDED. RUN TIME BETWEEN GREASINGS NOT TO EXCEED 2,000 HOURS.
3. **WARNING!!!** INJURY OR DEATH FROM A ROTATING STUB SHAFT CAN OCCUR IF A CONDITION EXISTS WHICH WOULD CAUSE THE SHAFT TO BREAK OR COME APART FROM ANY PART OF THE ASSEMBLY. DEPENDING UPON THE APPLICATION (FOR EXAMPLE, FAN, PULLEY, SHEAVE, ETC.), THE AREA AROUND THE STUB SHAFT MUST BE SUFFICIENTLY GUARDED SO THAT IN THE EVENT OF FAILURE, THE GUARD WILL CONTAIN ANY AIRBORNE PARTS.



SPLINE DATA:
 14 TOOTH
 12/24 D.P.
 30° P.A.

SUB ASS'Y #126088
COUPLING ASS'Y #127772

21	972005	BOLT KIT (PRE-ASSEMBLED)	1
20	930114-08	HOUSING	1
19	127695	HOLLOW DOWEL BUSHING	1
18	DOWEL	SD200x5/16x1/2 DOWEL PIN	2
17	BOLT	1/2-13x1 SHCS	4
16	1093K11	RELIEF VALVE	1
15	126087	SPLINED SHAFT	1
14	132015	SEAL	1
13	RR-314	SNAP RING	1
12	600000	GREASE ZERK	2
11	125007	BEARING HOUSING	1
10	5208WD	DOUBLE BEARING	1
9	208KD	BEARING	1
8	VS-032	V-RING	1
7	801912	GREASE	1
6	R-0017-02	GREASE PLUG	1
5	HX300	SPEC. 5/16-24x5/8 HHB Y D	5
4	123729-01	THREADED BUSHING	5
3	H52500	NEOPRENE INSERT	5
2	127773	COUP HUB [14T 16/32\4.125]	1
1	127623	FLYWHEEL PLATE	1

SYMBOLS	DET.	PART NUMBER	DESCRIPTION	QTY.
▭ FLATNESS ▭ STRAIGHTNESS ▭ ANGULARITY ▭ PERPENDICULARITY ▭ PARALLELISM ⊙ CONCENTRICITY ⊕ TRUE POSITION ○ ROUNDNESS Ⓢ CIRCULAR RUN OUT Ⓣ TOTAL RUN OUT Ⓢ CYLINDRICITY ▭ FINISH	DO NOT SCALE DRAWING TOLERANCES UNLESS OTHERWISE SPECIFIED 125 MAXIMUM ANGLE ±1/2° FRACTION ±1/32 DECIMAL .00 ±.01 .000 ±.005 .0000 ±.0005			
CLASS BS ASSY DESCRIPTION KB972,1-1/2,3	MAKE: <input checked="" type="checkbox"/> BUY: <input type="checkbox"/>	DRAWN BY SIETING CHECKED BY RJH	DATE 04-27-2009 SCALE	DRAWING NO. 972034 SHEET OF REV.

THIS DRAWING IS THE PROPERTY OF HAYES MFG. INC. AND IS LOANED SUBJECT TO THE CONDITION THAT IT SHALL NOT BE REPRODUCED, COPIED, LOANED OR OTHERWISE DISPOSED OF, DIRECTLY OR INDIRECTLY. IT SHALL BE USED AS A MEANS OF REFERENCE TO WORK FURNISHED BY THIS COMPANY ONLY AND IS NOT TO BE SUBMITTED TO OUTSIDE PARTIES FOR EXAMINATION WITHOUT OUR CONSENT.