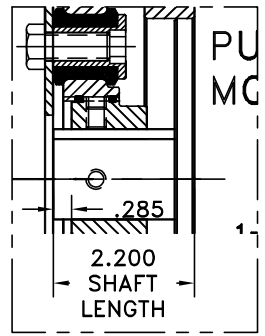
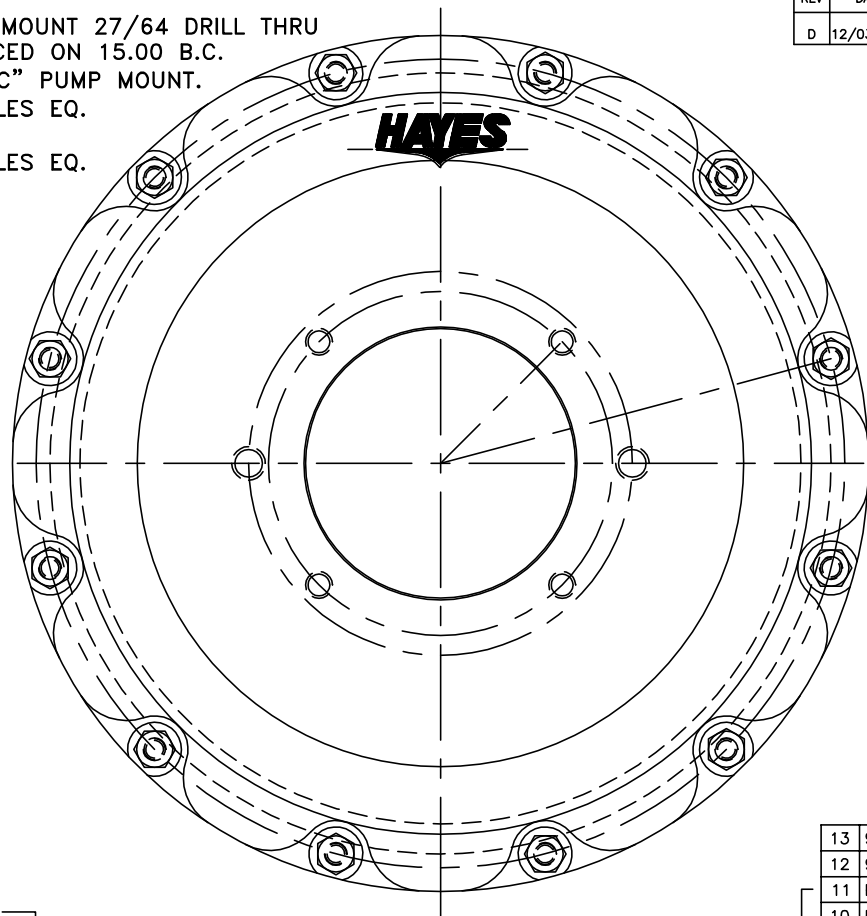
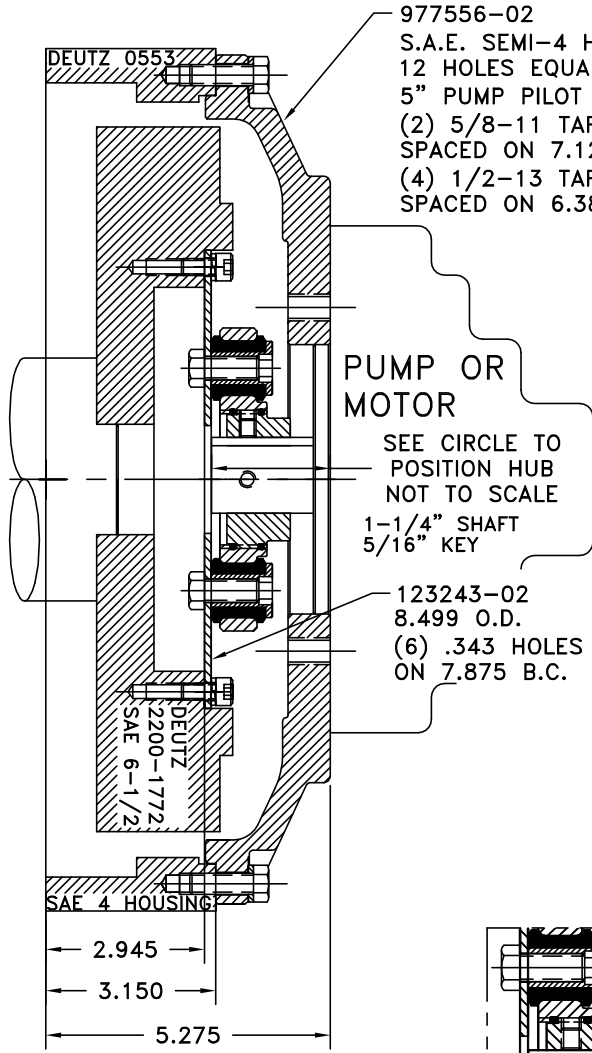


REV	DATE	CHANGE DESCRIPTION	MOD. BY	CK1	CK2
D	12/03/2002	CHANGED HUB TO 124284-43	ZS	RJH	HM



NOTE: REMOVE HUB FROM ASS'Y, PRESET HUB ON SHAFT & RE-ASSEMBLE USING NUT & BOLT GRADE LOC-TITE ON SET SCREWS

NOTE: TORQUE ALL M10 BOLTS 29-33 FT.LBS.  
TORQUE ALL M8 BOLTS 20-25 FT.LBS.

COUPLING ASS'Y  
#124912

13	977556-02	HOUSING [4]	1
12	977524	BOLT KIT	1
11	PURCHASE	5/16-18x1/2 SSSCP	1
10	PURCHASE	5/16-18x3/8 SSSCP	1
9	801912	GREASE	1
8	568-143	O-RING (124473)	1
7	568-142	O-RING (124284-43)	1
6	HX200	7/16-20x1 HHB	6
5	123727	THREADED BUSHING	6
4	H62500	NEOPRENE INSERT	6
3	124284-43	EXTERNAL SPLINED ADAPTER	1
2	124473	INT. SPL. HUB [40-16/32\4.125]	1
1	123243-02	FLYWHEEL PLATE [6.5\4.125]	1

SYMBOLS	DET.	PART NUMBER	DESCRIPTION	QTY.
<ul style="list-style-type: none"> <li>— FLATNESS</li> <li>— STRAIGHTNESS</li> <li>— ANGULARITY</li> <li>— SQUARENESS</li> <li>— PARALLELISM</li> <li>— CONCENTRICITY</li> <li>— TRUE POSITION</li> <li>— ROUNDNESS</li> <li>— CIRCULAR RUN OUT</li> <li>— TOTAL RUN OUT</li> <li>— FINISH</li> </ul>	DO NOT SCALE DRAWING TOLERANCES UNLESS OTHERWISE SPECIFIED 125 MAXIMUM ANGLE ±1/2° FRACTION ±1/32 DECIMAL .00 ±.01 .000 ±.005 .0000 ±.0005			
			<b>TITLE</b> DEUTZ HOUSING & COUPLING ASS'Y <b>MATERIAL</b>	
			- UNLESS OTHERWISE SPECIFIED - REMOVE FIRST THREAD ON ALL TAPPED HOLES BREAK ALL SHARP CORNERS .010 TO .020 STAMP OR MARK DRAWING NO.	DRAWN BY HAVEMAN CHECKED BY SCALE
			DATE 2-9-98 DRAWING NO. 977522 SHEET OF REV.	

THIS DRAWING IS THE PROPERTY OF HAYES MFG. INC. AND IS LOANED SUBJECT TO THE CONDITION THAT IT SHALL NOT BE REPRODUCED, COPIED, LOANED OR OTHERWISE DISPOSED OF, DIRECTLY OR INDIRECTLY. IT SHALL BE USED AS A MEANS OF REFERENCE TO WORK FURNISHED BY THIS COMPANY ONLY AND IS NOT TO BE SUBMITTED TO OUTSIDE PARTIES FOR EXAMINATION WITHOUT OUR CONSENT.