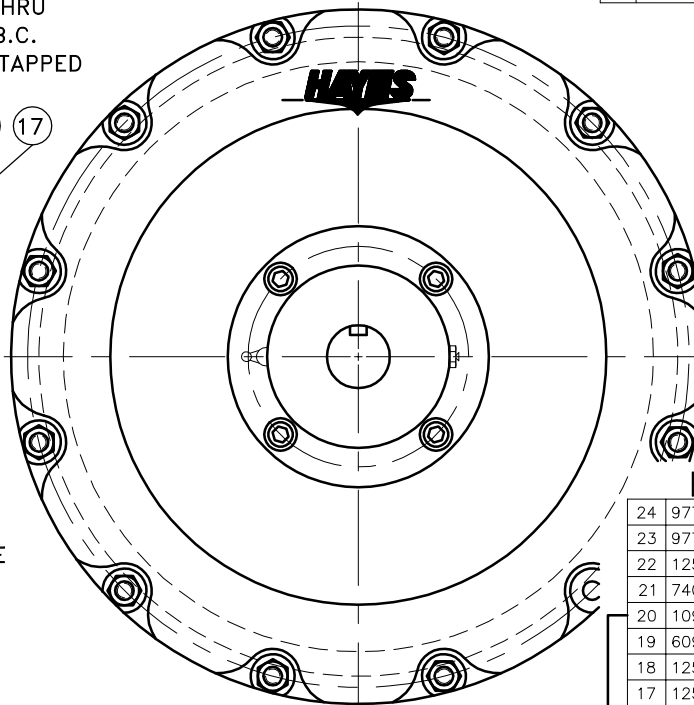
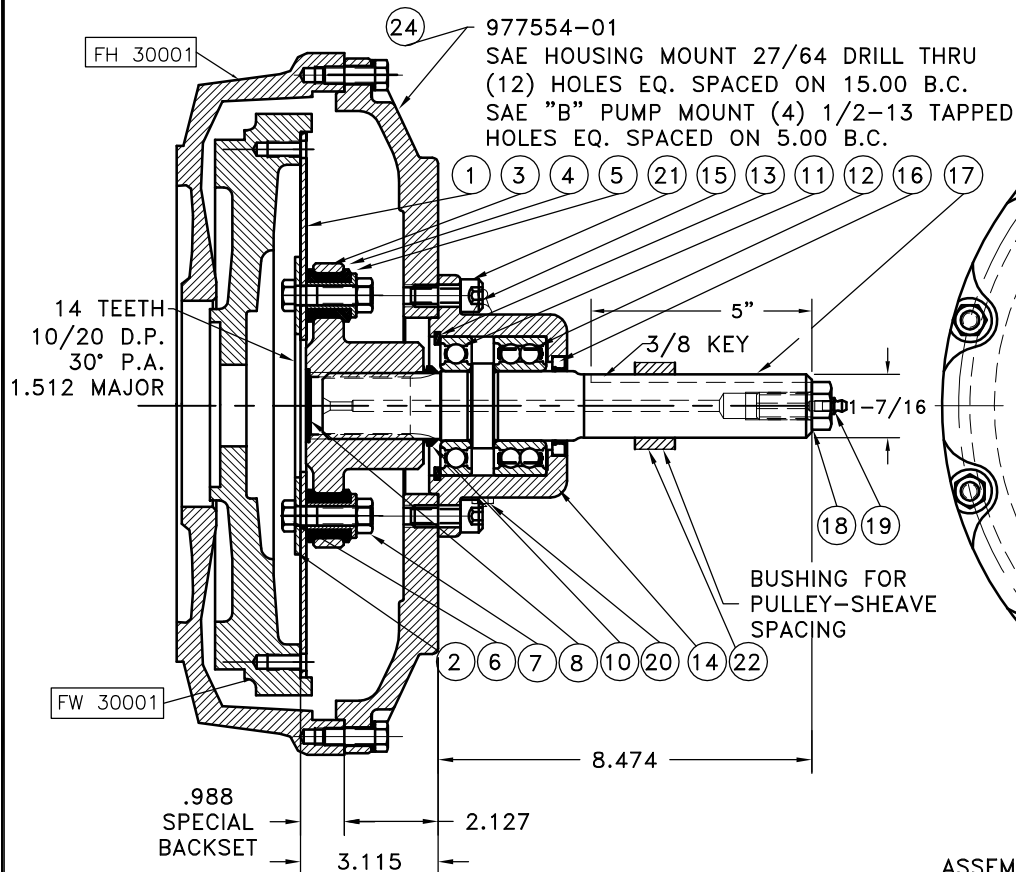


REV	DATE	CHANGE DESCRIPTION	MOD.BY	CK1	CK2
H	09/16/2002	UPDATED HOUSING	ZS	RJH	HM



CUMMINS 3.3 LITRE REF: REPLACES 977543

24	977554-01	HOUSING	1
23	977526	BOLT KIT	1
22	125432	BUSHING	1
21	740000	1/2-13x1-1/8 SHCS	4
20	1093K11	RELIEF VALVE	1
19	609000	GREASE ZERT	1
18	125294	SPECIAL 5/8-11 HHB	1
17	125721	SPLINED SHAFT	1
16	CRW1 R 15830	SEAL	1
15	600000	GREASE ZERT	1
14	125007	BEARING HOUSING	1
13	RR-314	SNAP RING	1
12	5208WD	DOUBLE BEARING	1
11	208P	BEARING	1
10	400401	V-RING	1
9	801912	GREASE	1
8	R-0017-02	GREASE PLUG	1
7	N250	7/16-20 NUT	10
6	HX230	7/16-20-1-3/4 H.H.B.	10
5	123000-00	STEEL BUSHING	10
4	H62500	NEOPRENE INSERT	10
3	126100	COUPLING HUB	1
2	124657-03	BACKING PLATE	1
1	124243-42	FLYWHEEL PLATE	1

SUB-ASS'Y
#125722

COUPLING ASS'Y
#125718

ASSEMBLY NOTE:

ENSURE THAT THE GREASE ZERT AND RELIEF VALVE ARE LOCATED HORIZONTAL WHEN MOUNTING ON TO PUMP MOUNT PLATE.

NOTES:

1. LIGHTLY GREASE INTERNAL AND EXTERNAL AREA OF SPLINE AT ASSEMBLY USING SUPPLIED COUPLING GREASE (OVER GREASING COULD CAUSE A HYDRAULIC TYPE LIFT ON SEALS).
2. **AT ASSEMBLY GREASE BEARING HOUSING UNTIL PIN EXTENDS FROM PRESSURE RELIEF VALVE (LOCATED 180° FROM GREASE ZERT).** USE OF AN UNLEADED EXTREME PRESSURE LITHIUM GREASE, WITH NLGI NO.2 GRADE IS RECOMMENDED. RUN TIME BETWEEN GREASINGS NOT TO EXCEED 2,000 HOURS.
3. **WARNING!!!** INJURY OR DEATH FROM A ROTATING STUB SHAFT CAN OCCUR IF A CONDITION EXISTS WHICH WOULD CAUSE THE SHAFT TO BREAK OR COME APART FROM ANY PART OF THE ASSEMBLY. DEPENDING UPON THE APPLICATION (FOR EXAMPLE, FAN, PULLEY, SHEAVE, ETC.), THE AREA AROUND THE STUB SHAFT MUST BE SUFFICIENTLY GUARDED SO THAT IN THE EVENT OF FAILURE, THE GUARD WILL CONTAIN ANY AIRBORNE PARTS.

NOTE: TORQUE ALL M10 BOLTS 29-33 FT.LBS.
SEMI-4 HOUSING AND SAE 10 FLYWHEEL

THIS DRAWING IS THE PROPERTY OF HAYES MFG. INC. AND IS LOANED SUBJECT TO THE CONDITION THAT IT SHALL NOT BE REPRODUCED, COPIED, LOANED OR OTHERWISE DISPOSED OF, DIRECTLY OR INDIRECTLY. IT SHALL BE USED AS A MEANS OF REFERENCE TO WORK FURNISHED BY THIS COMPANY ONLY AND IS NOT TO BE SUBMITTED TO OUTSIDE PARTIES FOR EXAMINATION WITHOUT OUR CONSENT.

SYMBOLS	DET.	PART NUMBER	DESCRIPTION	QTY.
FLATNESS STRAIGHTNESS ANGULARITY PERPENDICULARITY PARALLELISM CONCENTRICITY TRUE POSITION ROUNDNESS CIRCULAR RUN OUT TOTAL RUN OUT CYLINDRICITY FINISH	DO NOT SCALE DRAWING TOLERANCES UNLESS OTHERWISE SPECIFIED 125 MAXIMUM ANGLE ±1/2° FRACTION ±1/32 DECIMAL .00 ±.01 .000 ±.005 .0000 ±.0005	MAKE: <input type="checkbox"/> BUY: <input type="checkbox"/>	HAYES MANUFACTURING INC. ® TITLE BEARING SUPPORTED STUB SHAFT ASS'Y MATERIAL	DRAWN BY HAVEMAN DATE 8-3-00 CHECKED BY SCALE DRAWING NO. 977568 SHEET OF REV.