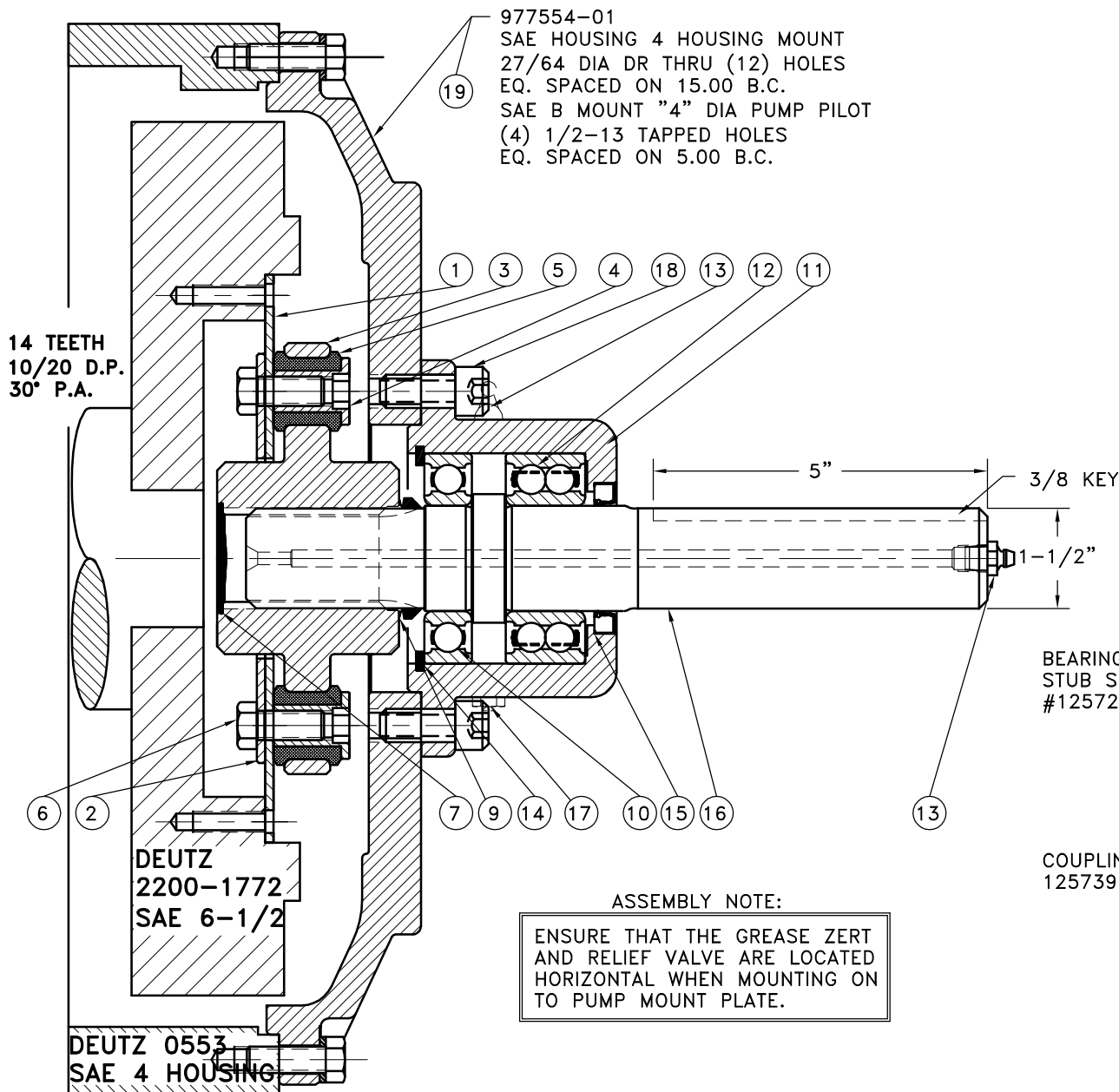


REV	DATE	CHANGE DESCRIPTION	MOD. BY	CK1	CK2
F	09/12/2002	CHANGED HUB TO 126920	ZS	RJH	HM



NOTES:

1. LIGHTLY GREASE INTERNAL AND EXTERNAL AREA OF SPLINE AT ASSEMBLY USING SUPPLIED COUPLING GREASE (OVER GREASING COULD CAUSE A HYDRAULIC TYPE LIFT ON SEALS).
2. **AT ASSEMBLY GREASE BEARING HOUSING UNTIL PIN EXTENDS FROM PRESSURE RELIEF VALVE (LOCATED 180° FROM GREASE ZERK).** USE OF AN UNLEADED EXTREME PRESSURE LITHIUM GREASE, WITH NLGI NO.2 GRADE IS RECOMMENDED. RUN TIME BETWEEN GREASINGS NOT TO EXCEED 2,000 HOURS.
3. **WARNING!!!** INJURY OR DEATH FROM A ROTATING STUB SHAFT CAN OCCUR IF A CONDITION EXISTS WHICH WOULD CAUSE THE SHAFT TO BREAK OR COME APART FROM ANY PART OF THE ASSEMBLY. DEPENDING UPON THE APPLICATION (FOR EXAMPLE, FAN, PULLEY, SHEAVE, ETC.), THE AREA AROUND THE STUB SHAFT MUST BE SUFFICIENTLY GUARDED SO THAT IN THE EVENT OF FAILURE, THE GUARD WILL CONTAIN ANY AIRBORNE PARTS.

REPLACES 977559 & 977560

20	977524	BOLT KIT	1
19	977554-01	PUMP MOUNT PLATE	1
18	740000	1/2-13-1-1/8 SHCS	4
17	1093K11	RELIEF VALVE	1
16	125723	SPLINED SHAFT	1
15	CRW1-R-15830	SEAL	1
14	RR-314	SPIROLOX SNAP RING	1
13	600000	GREASE ZERT	2
12	5208WD	DOUBLE BEARING	1
11	125007	BEARING HOUSING	1
10	208P	BEARING	1
9	400401	V-RING	1
8	801912	GREASE	1
7	R-0017-02	GREASE PLUG	1
6	HX200	7/16-20-1 BOLT	10
5	H62500	NEOPRENE INSERT	10
4	123727	THREADED BUSHING	10
3	126920	COUPLING HUB	1
2	124657-03	BACKING PLATE	1
1	124243-60	FLYWHEEL PLATE	1

BEARING SUPPORTED
STUB SHAFT SUB-ASS'Y
#125724

COUPLING ASS'Y
125739

ASSEMBLY NOTE:

ENSURE THAT THE GREASE ZERT
AND RELIEF VALVE ARE LOCATED
HORIZONTAL WHEN MOUNTING ON
TO PUMP MOUNT PLATE.

**NOTE: TORQUE ALL M10 BOLTS 29-33 FT.LBS.
TORQUE ALL M8 BOLTS 20-25 FT.LBS.**

THIS DRAWING IS THE PROPERTY OF HAYES MFG. INC. AND IS LOANED
SUBJECT TO THE CONDITION THAT IT SHALL NOT BE REPRODUCED,
COPIED, LOANED OR OTHERWISE DISPOSED OF, DIRECTLY OR INDIRECTLY.
IT SHALL BE USED AS A MEANS OF REFERENCE TO WORK FURNISHED BY
THIS COMPANY ONLY AND IS NOT TO BE SUBMITTED TO OUTSIDE PARTIES
FOR EXAMINATION WITHOUT OUR CONSENT.

SYMBOLS	DET.	PART NUMBER	DESCRIPTION	QTY.
FLATNESS STRAIGHTNESS ANGULARITY PERPENDICULARITY PARALLELISM CONCENTRICITY TRUE POSITION ROUNDNESS CIRCULAR RUN OUT TOTAL RUN OUT CYLINDRICITY FINISH	DO NOT SCALE DRAWING TOLERANCES UNLESS OTHERWISE SPECIFIED .125" MAXIMUM ANGLE ±1/2° FRACTION ±1/32 DECIMAL .00 ±.01 .000 ±.005 .0000 ±.0005	MAKE: <input type="checkbox"/> BUY: <input type="checkbox"/>	HAYES MANUFACTURING INC. ® TITLE DEUTZ BEARING SUPPORTED STUB SHAFT ASS'Y MATERIAL	
CLASS	DESCRIPTION	DRAWN BY HAVEMAN CHECKED BY	DATE 8-8-00 SCALE	DRAWING NO. 977569 SHEET OF REV.

4/16/2014 10:10:46 AM