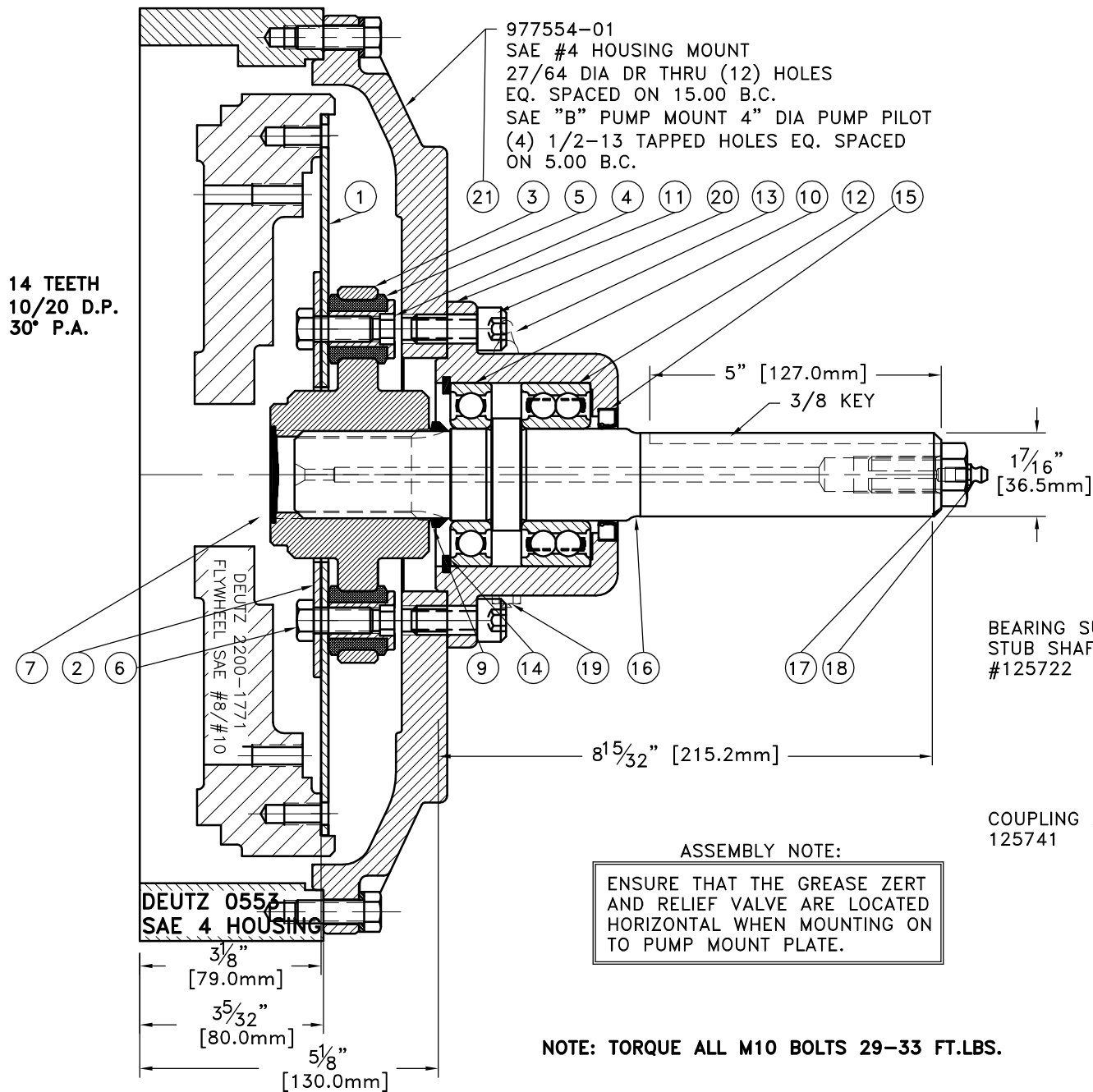


| REV | DATE | CHANGE DESCRIPTION | MOD.BY | CK1 | CK2 |
|-----|------------|-----------------------|--------|-----|-----|
| F | 09/12/2002 | CHANGED HUB TO 126099 | ZS | RJH | HM |



NOTES:

1. LIGHTLY GREASE INTERNAL AND EXTERNAL AREA OF SPLINE AT ASSEMBLY USING SUPPLIED COUPLING GREASE (OVER GREASING COULD CAUSE A HYDRAULIC TYPE LIFT ON SEALS).
2. **AT ASSEMBLY GREASE BEARING HOUSING UNTIL PIN EXTENDS FROM PRESSURE RELIEF VALVE (LOCATED 180° FROM GREASE ZERK).** USE OF AN UNLEADED EXTREME PRESSURE LITHIUM GREASE, WITH NLGI NO.2 GRADE IS RECOMMENDED. RUN TIME BETWEEN GREASINGS NOT TO EXCEED 2,000 HOURS.
3. **WARNING!!!** INJURY OR DEATH FROM A ROTATING STUB SHAFT CAN OCCUR IF A CONDITION EXISTS WHICH WOULD CAUSE THE SHAFT TO BREAK OR COME APART FROM ANY PART OF THE ASSEMBLY. DEPENDING UPON THE APPLICATION (FOR EXAMPLE, FAN, PULLEY, SHEAVE, ETC.), THE AREA AROUND THE STUB SHAFT MUST BE SUFFICIENTLY GUARDED SO THAT IN THE EVENT OF FAILURE, THE GUARD WILL CONTAIN ANY AIRBORNE PARTS.

BEARING SUPPORTED
STUB SHAFT SUB-ASS'Y
#125722

COUPLING ASS'Y
125741

| | | | |
|----|--------------|--------------------|----|
| 22 | 977526 | BOLT KIT | 1 |
| 21 | 977554-01 | PUMP MOUNT PLATE | 1 |
| 20 | 740000 | 1/2-13-1-1/8 SHCS | 4 |
| 19 | 1093K11 | RELIEF VALVE | 1 |
| 18 | 609000 | GREASE ZERT | 1 |
| 17 | 125294 | SPECIAL 5/8-11 HHB | 1 |
| 16 | 125721 | SPLINE SHAFT | 1 |
| 15 | CRW1-R-15830 | SEAL | 1 |
| 14 | RR-314 | SPIROLOX SNAP RING | 1 |
| 13 | 600000 | GREASE ZERT | 1 |
| 12 | 5208WD | DOUBLE BEARING | 1 |
| 11 | 125007 | BEARING HOUSING | 1 |
| 10 | 208P | BEARING | 1 |
| 9 | 400401 | V-RING | 1 |
| 8 | 801912 | GREASE | 1 |
| 7 | R-0017-02 | GREASE PLUG | 1 |
| 6 | HX200 | 7/16-20-1 BOLT | 10 |
| 5 | H62500 | NEOPRENE INSERT | 10 |
| 4 | 123727 | THREADED BUSHING | 10 |
| 3 | 126099 | COUPLING HUB | 1 |
| 2 | 124657-03 | BACKING PLATE | 1 |
| 1 | 124243-42 | FLYWHEEL PLATE | 1 |

ASSEMBLY NOTE:
ENSURE THAT THE GREASE ZERT
AND RELIEF VALVE ARE LOCATED
HORIZONTAL WHEN MOUNTING ON
TO PUMP MOUNT PLATE.

NOTE: TORQUE ALL M10 BOLTS 29-33 FT.LBS.

THIS DRAWING IS THE PROPERTY OF HAYES MFG. INC. AND IS LOANED SUBJECT TO THE CONDITION THAT IT SHALL NOT BE REPRODUCED, COPIED, LOANED OR OTHERWISE DISPOSED OF, DIRECTLY OR INDIRECTLY. IT SHALL BE USED AS A MEANS OF REFERENCE TO WORK FURNISHED BY THIS COMPANY ONLY AND IS NOT TO BE SUBMITTED TO OUTSIDE PARTIES FOR EXAMINATION WITHOUT OUR CONSENT.

| SYMBOLS | DET. | PART NUMBER | DESCRIPTION | QTY. |
|---|--|--|---|-----------------------|
| ——— FLATNESS ——— STRAIGHTNESS <— ANGULARITY ⊥ PERPENDICULARITY // PARALLELISM ⊙ CONCENTRICITY ⊕ TRUE POSITION ○ ROUNDNESS ⊘ CIRCULAR RUN OUT ⊘ TOTAL RUN OUT ⊘ CYLINDRICITY ✓ FINISH | DO NOT SCALE DRAWING TOLERANCES UNLESS OTHERWISE SPECIFIED .125" MAXIMUM ANGLE ±1/2° FRACTION ±1/32 DECIMAL .00 ±.01 .000 ±.005 .0000 ±.0005 | MAKE: <input type="checkbox"/> BUY: <input type="checkbox"/> | HAYES MANUFACTURING INC. ® TITLE DEUTZ BEARING SUPPORTED STUB SHAFT ASS'Y MATERIAL | |
| CLASS | DESCRIPTION | DRAWN BY HAYEMAN | DATE 8-8-00 | DRAWING NO. 977583 |
| | | CHECKED BY | SCALE | SHEET OF REV. |