

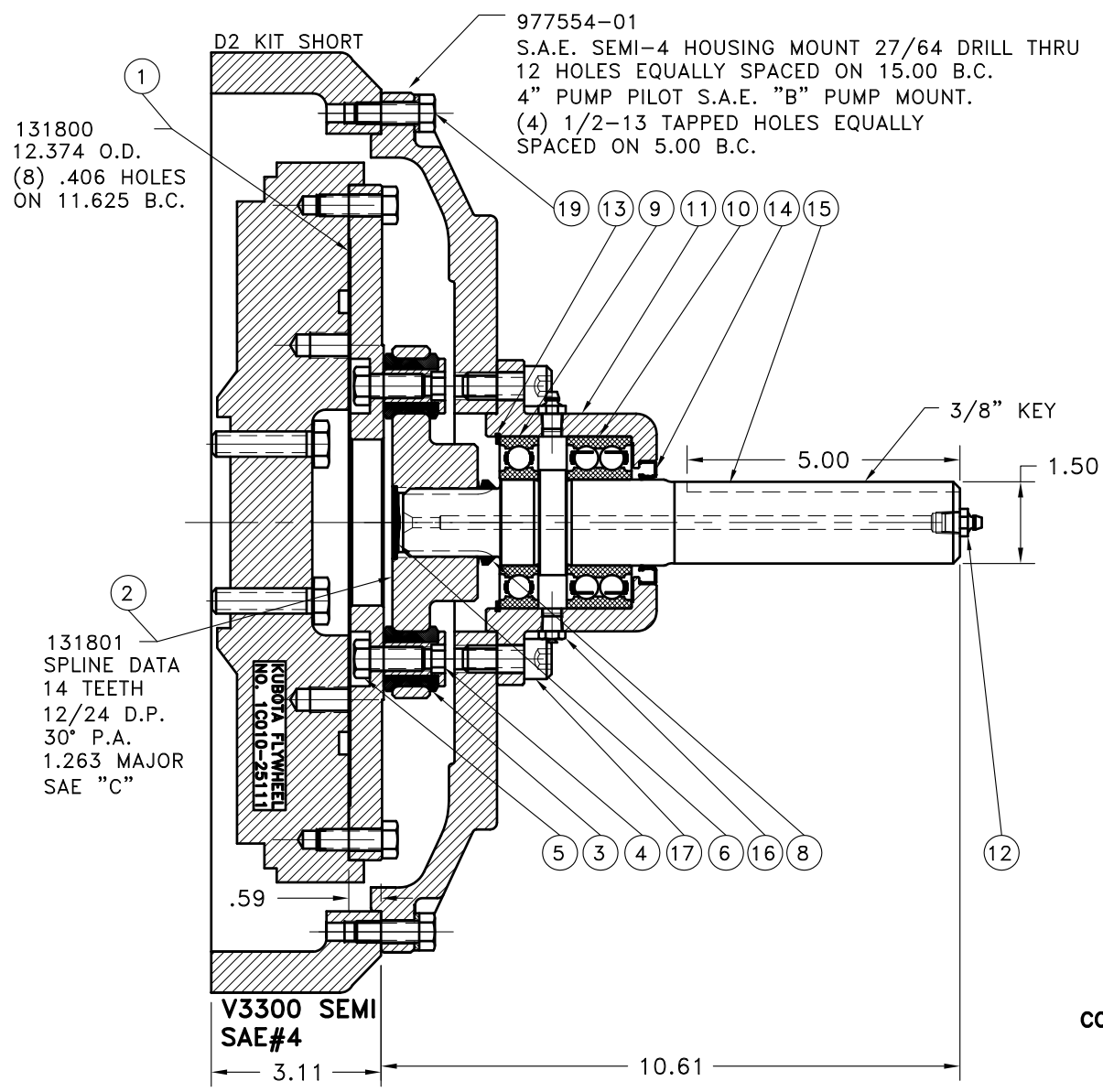
REV	DATE	CHANGE DESCRIPTION	MOD.BY	CK1	CK2
B	07/21/2015	CHANGED BOLT KIT	LAWSON		

NOTES:

- LIGHTLY GREASE INTERNAL AND EXTERNAL AREA OF SPLINE AT ASSEMBLY USING SUPPLIED COUPLING GREASE (OVER GREASING COULD CAUSE A HYDRAULIC TYPE LIFT ON SEALS).
- AT ASSEMBLY GREASE BEARING HOUSING UNTIL PIN EXTENDS FROM PRESSURE RELIEF VALVE (LOCATED 180° FROM GREASE ZERK).** USE OF AN UNLEADED EXTREME PRESSURE LITHIUM GREASE, WITH NLGI NO.2 GRADE IS RECOMMENDED. RUN TIME BETWEEN GREASINGS NOT TO EXCEED 2,000 HOURS.
- WARNING!!!** INJURY OR DEATH FROM A ROTATING STUB SHAFT CAN OCCUR IF A CONDITION EXISTS WHICH WOULD CAUSE THE SHAFT TO BREAK OR COME APART FROM ANY PART OF THE ASSEMBLY. DEPENDING UPON THE APPLICATION (FOR EXAMPLE, FAN, PULLEY, SHEAVE, ETC.), THE AREA AROUND THE STUB SHAFT MUST BE SUFFICIENTLY GUARDED SO THAT IN THE EVENT OF FAILURE, THE GUARD WILL CONTAIN ANY AIRBORNE PARTS.

ASSEMBLY NOTE:

ENSURE THAT THE GREASE ZERK AND RELIEF VALVE ARE LOCATED HORIZONTAL WHEN MOUNTING ON TO PUMP MOUNT PLATE OR HOUSING.



131800
12.374 O.D.
(8) .406 HOLES
ON 11.625 B.C.

977554-01
S.A.E. SEMI-4 HOUSING MOUNT 27/64 DRILL THRU
12 HOLES EQUALLY SPACED ON 15.00 B.C.
4" PUMP PILOT S.A.E. "B" PUMP MOUNT.
(4) 1/2-13 TAPPED HOLES EQUALLY
SPACED ON 5.00 B.C.

131801
SPLINE DATA
14 TEETH
12/24 D.P.
30° P.A.
1.263 MAJOR
SAE "C"

V3300 SEMI
SAE#4

**NOTE: TORQUE ALL
M10 BOLTS 29-33
FT.LBS.**

NOTES:

- HOUSING WILL FIT THE KUBOTA V3300 OR ANY KUBOTA USING THE FLYWHEEL AND FLYWHEEL HOUSING LISTED ON THIS DRAWING.
- USE FURNISHED COUPLING GREASE ON BOTH MALE AND FEMALE SPLINE.

THIS DRAWING IS THE PROPERTY OF HAYES MFG. INC. AND IS LOANED SUBJECT TO THE CONDITION THAT IT SHALL NOT BE REPRODUCED, COPIED, LOANED OR OTHERWISE DISPOSED OF, DIRECTLY OR INDIRECTLY. IT SHALL BE USED AS A MEANS OF REFERENCE TO WORK FURNISHED BY THIS COMPANY ONLY AND IS NOT TO BE SUBMITTED TO OUTSIDE PARTIES FOR EXAMINATION WITHOUT OUR CONSENT.

SUB ASS'Y #125711
COUPLING ASS'Y #131802

19	977554-01	SEMI SAE#4 HOUSING [B4]	1
18	977810	BOLT KIT (PRE-ASSEMBLED)	1
17	BOLT	1/2-13x1-1/8 SHCS D	4
16	1093K11	RELIEF VALVE	1
15	125710	SPLINED SHAFT	1
14	15830	SEAL	1
13	RR-314	SNAP RING	1
12	600000	GREASE ZERK	2
11	125007	BEARING HOUSING	1
10	5208WD	DOUBLE BEARING	1
9	208KD	BEARING	1
8	VS-032	V-RING	1
7	801912	GREASE	1
6	R-0017-01	HUBBARD PLUG	1
5	BOLT	7/16-20x1 HHB Y D	10
4	123727	THREADED BUSHING	10
3	H62500	NEOPRENE INSERT	10
2	131801	COUPLING HUB [14T 12/24]	1
1	131800	FLYWHEEL PLATE	1

SYMBOLS	DET.	PART NUMBER	DESCRIPTION	QTY.
▭ FLATNESS ▭ STRAIGHTNESS ▭ ANGULARITY ⊥ PERPENDICULARITY ▭ PARALLELISM ⊙ CONCENTRICITY ⊕ TRUE POSITION ○ ROUNDNESS ⊙ CIRCULAR RUN OUT ⊙ TOTAL RUN OUT ⊙ CYLINDRICITY ▭ FINISH	DO NOT SCALE DRAWING TOLERANCES UNLESS OTHERWISE SPECIFIED 125 MAXIMUM ANGLE ±1/2° FRACTION ±1/32 DECIMAL .00 ±.01 .000 ±.005 .0000 ±.0005		HAYES MANUFACTURING INC. ® TITLE KUBOTA V3300 STUB SHAFT ASS'Y MATERIAL	
CLASS BS ASSY DESCRIPTION KBV3300,1-1/2,5,LNG	MAKE: <input checked="" type="checkbox"/> BUY: <input type="checkbox"/>	DRAWN BY SIETING CHECKED BY	DATE 06-01-2015 SCALE	DRAWING NO. 977809 SHEET OF REV.